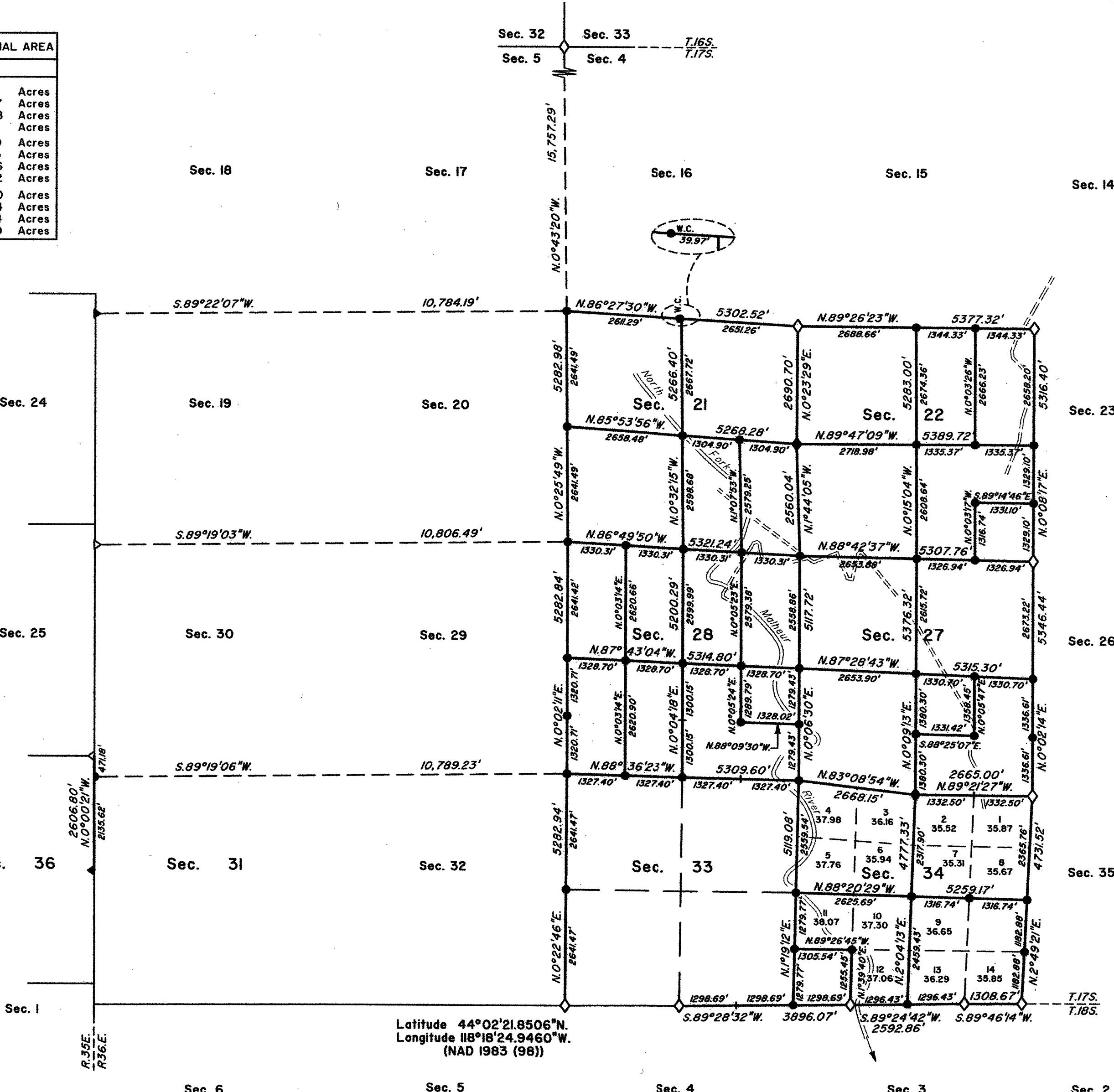


TOWNSHIP 17 SOUTH, RANGE 36 EAST, OF THE WILLAMETTE MERIDIAN, OREGON

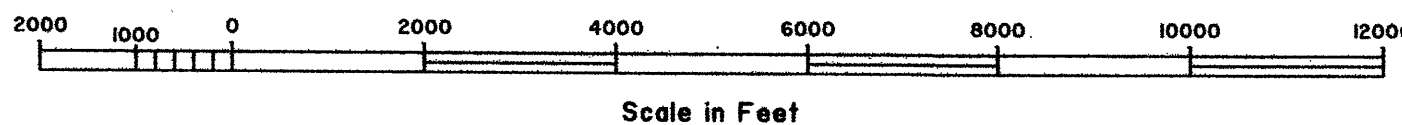
DEPENDENT RESURVEY AND SUBDIVISION OF SECTIONS 21, 22, 27, 28, AND 34

LEGAL SUBDIVISION	OFFICIAL AREA
SECTION 21	
NE 1/4 NE 1/4	40.61 Acres
SE 1/4 NE 1/4	40.27 Acres
SW 1/4 NE 1/4	40.08 Acres
NW 1/4 NE 1/4	40.41 Acres
NE 1/4 SW 1/4	39.69 Acres
SE 1/4 SW 1/4	39.73 Acres
SW 1/4 SW 1/4	40.06 Acres
NW 1/4 SW 1/4	40.02 Acres
NE 1/4 NW 1/4	40.40 Acres
SE 1/4 NW 1/4	40.44 Acres
SW 1/4 NW 1/4	40.24 Acres
NW 1/4 NW 1/4	40.20 Acres



Latitude 44°02'21.8506"N.
Longitude 118°18'24.9460"W.
(NAD 1983 (98))

LEGEND	
◇	Original corner previously remonumented
◆	Original corner remonumented this survey
●	Corner established or reestablished this survey



RECEIVED AND
FILED

JAN 28, 2003
OFFICE OF COUNTY SURVEYOR
Attest: *[Signature]*

A history of surveys is contained in the field notes.

This plat represents a dependent resurvey of a portion of the south and west boundaries and subdivisional lines, T. 17 S., R. 36 E., Willamette Meridian, Oregon, designed to restore the corners in their true original locations according to the best available evidence, and the subdivision of sections 21, 22, 27, 28, and 34.

Measured distances and directions have been adjusted by Cadastral Measurement Management for Windows (WinCMM), computer software that incorporates a least squares adjustment routine. The adjusted bearings and distances are reported to the nearest second and 0.01 foot.

Except as shown hereon, the lottings and areas are as shown on the plat approved September 29, 1884.

The survey was executed by Daniel E. Weller and James L. Carter, Cadastral Surveyors, beginning June 5, 2000, and completed August 28, 2000, pursuant to Special Instructions dated May 30, 2000, under Group Number 1946, Oregon.

Timber in this area consists of juniper, fir, and pine.

At the request of the U.S. Forest Service, the true area for each quarter-quarter section is reported for all lands under their jurisdiction. Where the true area is within 5% of the record area, the quarter-quarter section will retain its aliquot part designation even though the area changes. The quarter-quarter section will continue to be divided by legal subdivision. Where the record area changes by more than 5% or the quarter-quarter section is badly distorted, it has been assigned a lot number and may be further divided only by supplemental plat.

UNITED STATES DEPARTMENT OF THE INTERIOR
BUREAU OF LAND MANAGEMENT

Portland, Oregon April 11, 2002

This plat is strictly conformable to the approved field notes, and the survey, having been correctly executed in accordance with the requirements of law and the regulations of this Bureau, is hereby accepted.

For the Director

Mary J. M. Hantel

Chief Cadastral Surveyor of Oregon