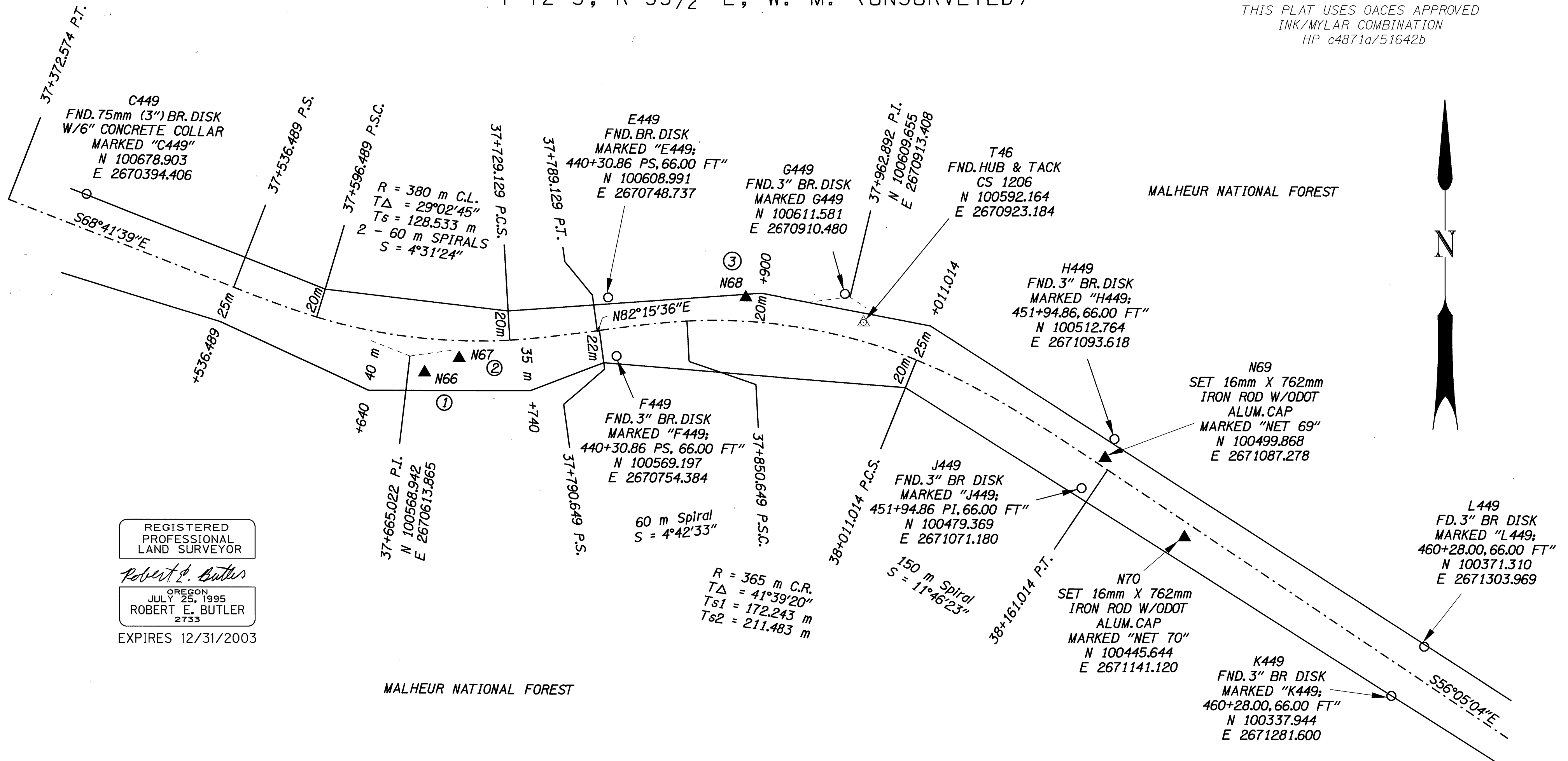


T 12 S, R 35 1/2 E, W. M. (UNSURVEYED)

THIS PLAT USES OACES APPROVED
INK/MYLAR COMBINATION
HP c4871a/51642b



REGISTERED
PROFESSIONAL
LAND SURVEYOR

Robert E. Butler

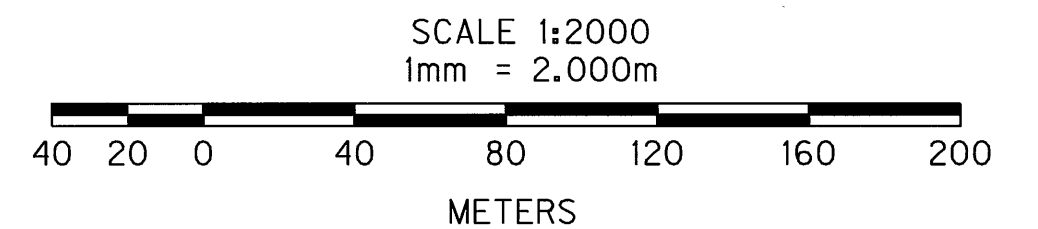
OREGON
JULY 25, 1995
ROBERT E. BUTLER
2733

EXPIRES 12/31/2003

MALHEUR NATIONAL FOREST

NOTES

- ▲ SET NETWORK POINT
 - △ FOUND MONUMENT USED AS NETWORK POINT
 - FND. 75mm (3") BR. DISC AS DESCRIBED BY BUREAU OF PUBLIC ROADS CONSTRUCTION PLANS FH-36
 - U.S.F.S. EASEMENT CENTERLINE
 - U.S.F.S. EASEMENT LINE
- ① PT. N66, SET 16mm x 762mm IRON ROD W/ODOT ALUM. CAP MARKED "NET 66"
N 100557.881
E 2670624.009
 - ② PT. N67, SET 16mm x 762mm IRON ROD W/ODOT ALUM. CAP MARKED "NET 67"
N 100567.640
E 2670647.450
 - ③ PT. N68, SET 16mm x 762mm IRON ROD W/ODOT ALUM. CAP MARKED "NET 68"
N 100609.177
E 2670842.557



TO CONVERT METERS TO S. I. FEET DIVIDE BY 0.3048

OREGON DEPARTMENT OF TRANSPORTATION
HORIZONTAL CONTROL, RECOVERY AND RETRACEMENT MAP
OF THE 1953 AND 2000 ALIGNMENT OF THE
JOHN DAY HIGHWAY (AUSTIN JCT. - BAKER CO. LINE SECTION)
GRANT COUNTY, OREGON
AUG. 3, 1999 TO OCT. 17, 2001 FOR O.D.O.T. REGION 5
3012 ISLAND AVE., LA GRANDE, OREGON 97850
2000 ALIGNMENT SHEET 20 OF 21