

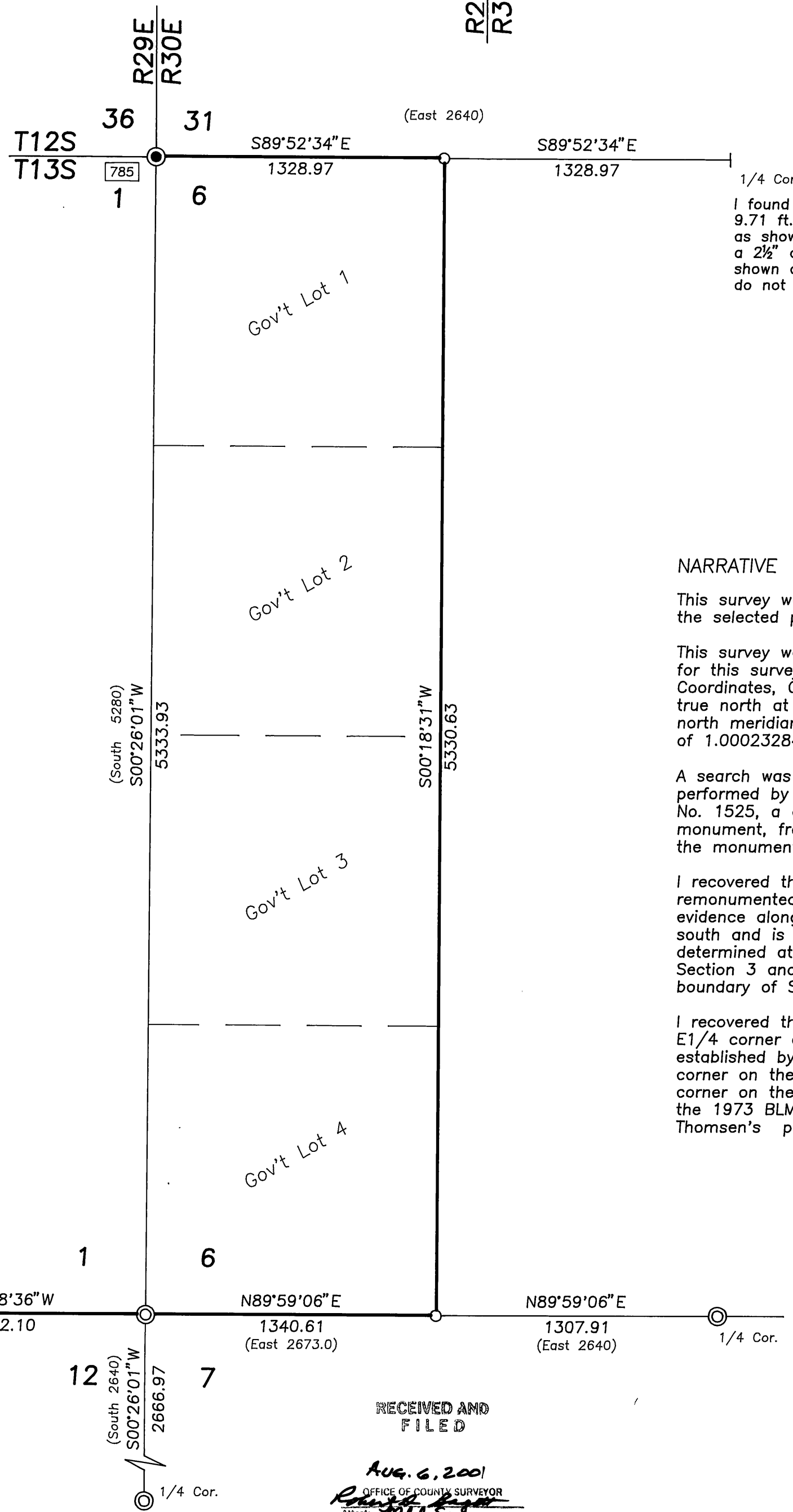
Scale 1"=500'

BASIS OF BEARINGS

GPS Survey
See Narrative

LEGEND

- Found 2 1/2" aluminum pipe with attached aluminum cap of Record.
- ⊙ Set 2 1/2" x 30" aluminum pipe with attached 3" aluminum cap. See corner restoration records filed in the Grant County Surveyor's office for corner details.
- Set 5/8" x 30" iron pin with attached 2" alum. cap marked CORNERSTONE SURVEYING, INC., and the proper corner designation. See corner restoration records filed in the Grant County Surveyor's office for corner details.
- X—X Fence Line
- () GLO record bearing and distance.
- Found monument, see record map of survey number shown in box.



1/4 Cor.
I found a 2 1/2" alum. monument S30°27'30"W, 9.71 ft. set by Douglas M. Ferguson, PLS 848, as shown on Record Map of Survey No. 785 and a 2 1/2" alum. monument N50°02'00"W, 8.05 ft., as shown on Record Map of Survey No. 1525, I do not accept either of these monuments

NARRATIVE

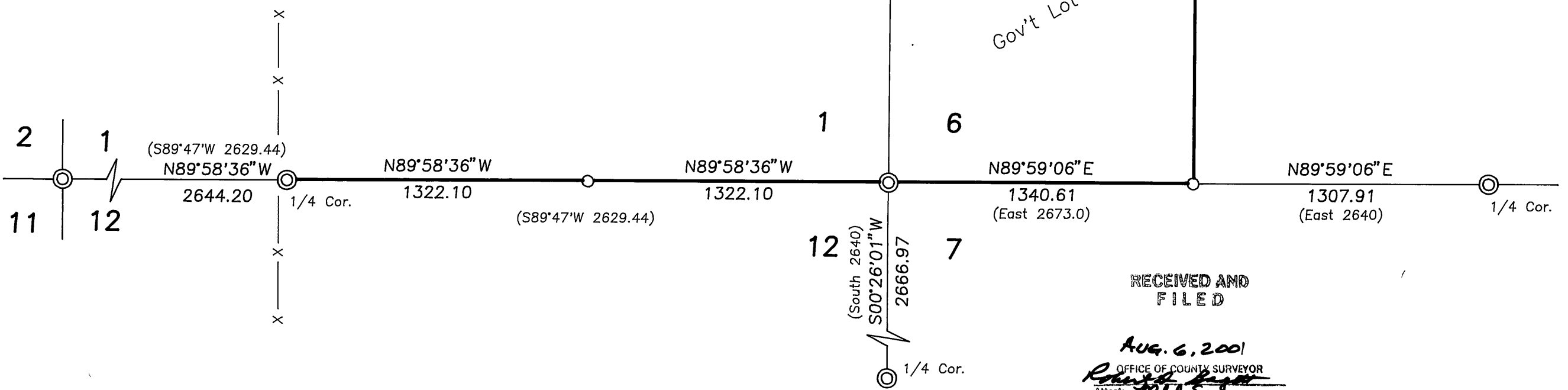
This survey was performed at the request of Tom Thomsen. The purpose of this survey was to set the selected property corners as shown and flag the property lines for future fencing.

This survey was performed using static GPS receivers and Electronic Total Station. The bearings for this survey are based on the GPS survey. The GPS survey was done in NAD 83 State Plane Coordinates, Oregon North Zone. The State Plane bearings were rotated clockwise 00°56'50" to true north at the NW corner of Section 6, T13S, R30E. All Bearings are relative to this local north meridian. Grid distances from the GPS survey were multiplied by the combined scale factor of 1.00023284 to compute the ground distances shown on this plat.

A search was made of the available records pertaining to this survey. Survey No. 785, was performed by Douglas M. Ferguson, from 1981 thru 1983, for the U.S. Forest Service. Survey No. 1525, a correction survey, was performed by Douglas M. Ferguson to correct the misplaced monument, from Survey No. 1185, set at the N1/4 corner of Section 6. I do not accept either of the monuments near the N1/4 corner of Section 6.

I recovered the original corner stone at the N1/4 corner of Section 3, T13S, R30E and remonumented the position with an aluminum monument. I did not find any other original evidence along this portion of the township line. The township line is the third standard parallel south and is run along the latitudinal curve. The position of the N1/4 corner of Section 6 was determined at single proportion between the NW corner of Section 6 and the N1/4 corner of Section 3 and on the latitudinal curve, no monument was set. The W1/16 corner on the north boundary of Section 6 was established in the usual manner.

I recovered the original corner stones at the S1/4 corner of Section 6, T13S, R30E and at the E1/4 corner and NW corner of Section 12, T13S, R29E. The NE corner of Section 12 was established by single proportion on the range line. The N1/4 corner of Section 12 and the W1/16 corner on the south boundary of Section 6 were also established by single proportion. The E1/16 corner on the south boundary of Section 1 was established in the usual manner as prescribed in the 1973 BLM Manual of Surveying Instructions. The north, south and east lines of Mr. Thomsen's property were staked for fencing.



RECEIVED AND FILED
Aug. 6, 2001
OFFICE OF COUNTY SURVEYOR
Grant County, Oregon
Attest: [Signature]

REGISTERED PROFESSIONAL LAND SURVEYOR
[Signature]
OREGON
SEPT 19, 1995
JACK L. WATSON
2734
Renewal Date 6/30/2002

CORNERSTONE SURVEYING, Inc.
233 S. Canyon Blvd., John Day, Oregon 97845
(541) 575-1813

MAP OF SURVEY SITUATED IN THE SE1/4 OF SECTION 1, T13S, R29E AND IN THE SW1/4 AND IN THE NW1/4 OF SECTION 6, T13S, R30E, W.M. GRANT COUNTY, OREGON	
SURVEYED FOR: Tom Thomsen	
SURVEYED BY: Jack Watson	Date: July 27, 2001
DRAWN BY: Jack Watson	