

**SURVEY LOCATED IN THE SE1/4 AND THE W1/2
SECTION 35, T. 10 S., R. 27 E., W.M.,
GRANT COUNTY, OREGON**
Survey Completed on May 24, 2001

NARRATIVE

This survey was performed at the request of D.R. Johnson Lumber Co. to locate the East-West Center of Section Line and the SE 1/16 Corner of Section 35, T.10S., R.27E., W.M.

The south line of Section 35 was originally surveyed by E.A. Thatcher under G.L.D. Contract No. 325 dated June 4, 1879. A retracement of the south line and the subdivision of T.10S., R.27E., W.M. was performed by Aaron York under G.L.D. Contract No. 394, dated May 25, 1881. A Dependent Resurvey was performed by C. Albert White and Raymond M. Bicknell, of the Bureau of Land Management, under special instructions dated August 17, 1955.

The following corners were monument by the B.L.M. Dependent Resurvey:

The NE, SE and SW Corners were monumented from original evidence.

The NW Corner was relocated by double proportionate measure from the original corners 1 mile North, East, South and West.

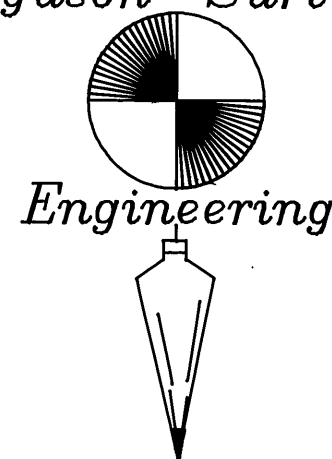
The North, South and West 1/4 Corners were relocated at single proportionate measure.

During the course of this survey, the monument for the North 1/4 Corner, as set by the B.L.M., was found to be S77°43'39"W, 48.90 ft. from the proportionate position. All of the monuments except for the North 1/4 Corner were set in 1955, but the North 1/4 was monumented in 1960. The measurements taken during this survey conform reasonably well to those returned by the B.L.M. Survey. The overall measurement of the North Line of Section 35 is found to be 6.24 ft. longer than that returned by the B.L.M. survey. I believe that the monumentation of the North 1/4, performed 5 years after the controlling monuments were located, was perhaps performed from the wrong control point. The B.L.M. monument is not accepted as the location of the North 1/4 Corner. A subsequent search was made for the original corner in the area of the proportionate position, but the area has been logged and the corner is believed to be destroyed. A new monument is placed this survey at proportionate measure from the corners 1/2 mile East and West.

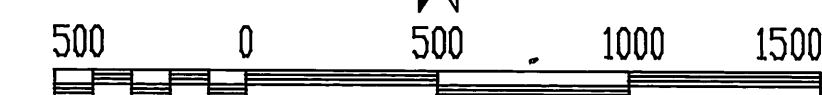
The original East 1/4 Corner was searched for, but the search area has seen a lot of human activity, including logging, road building and fencing. This corner is re-established at proportionate measure from the corners 1/2 miles North and South.

The SE 1/4 of Section 35 is subdivided in a normal manner as shown, and the C-W 1/16 is also monumented.

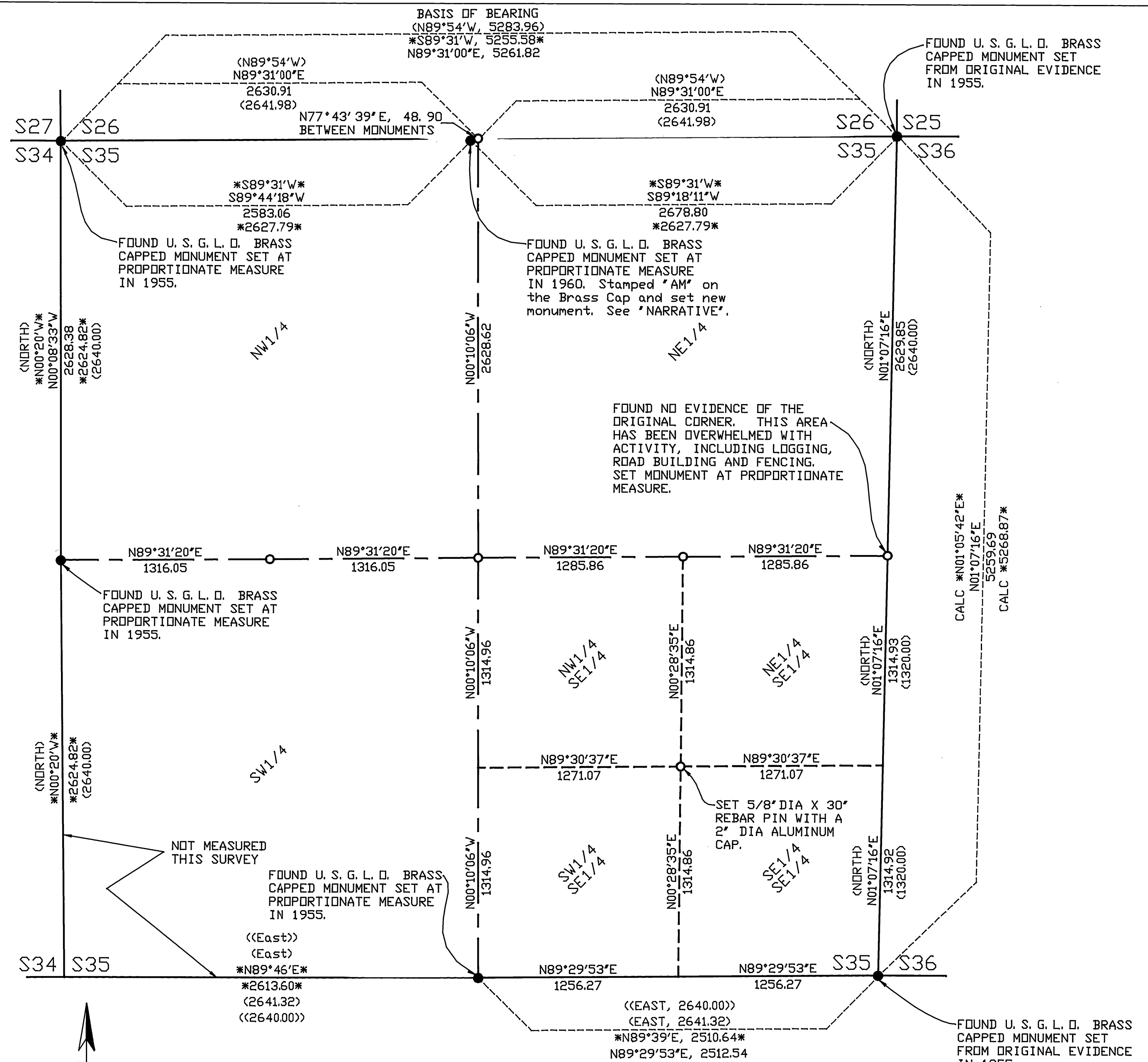
Ferguson Surveying



P.O. Box 519, 210 E. Main
MT. VERNON, OR 97865
PHONE (541)932-4520
FAX (541)932-4430
EMAIL dfse@highdesertnet.com



Scale: 1" = 500'
BASIS OF BEARING: B.L.M. DEPENDENT RESURVEY
COMPLETED NOVEMBER 4, 1960



Bearing/Dist BEARING/DIST. AS REPORTED BY THE BUREAU OF LAND MANAGEMENT DURING A DEPENDENT RESURVEY COMPLETED IN NOVEMBER OF 1960.
(Bearing/Dist) BEARING/DIST. REPORTED BY AARON YORK UNDER G.L.D. CONTRACT NO. 391 DATED MAY 25, 1881
(Bearing/Dist) BEARING/DIST. REPORTED BY E.A. THATCHER UNDER G.L.D. CONTRACT NO. 325, DATED JUNE 4, 1879.

LEGEND

● FOUND U.S.G.L.D. BRASS CAPPED MONUMENT. SEE NOTE AT SYMBOL
○ SET 2-1/2" DIA X 30" ALUMINUM PIPE WITH 3-1/4" DIA ALUMINUM CAP (UNLESS OTHERWISE NOTED)
— SECTION LINE
- - - CENTER OF SECTION LINE
- - - SECTION SUBDIVISIONAL LINE

RECEIVED AND
FILED

July 3, 2001

OFFICE OF COUNTY SURVEYOR
Attest: *[Signature]*