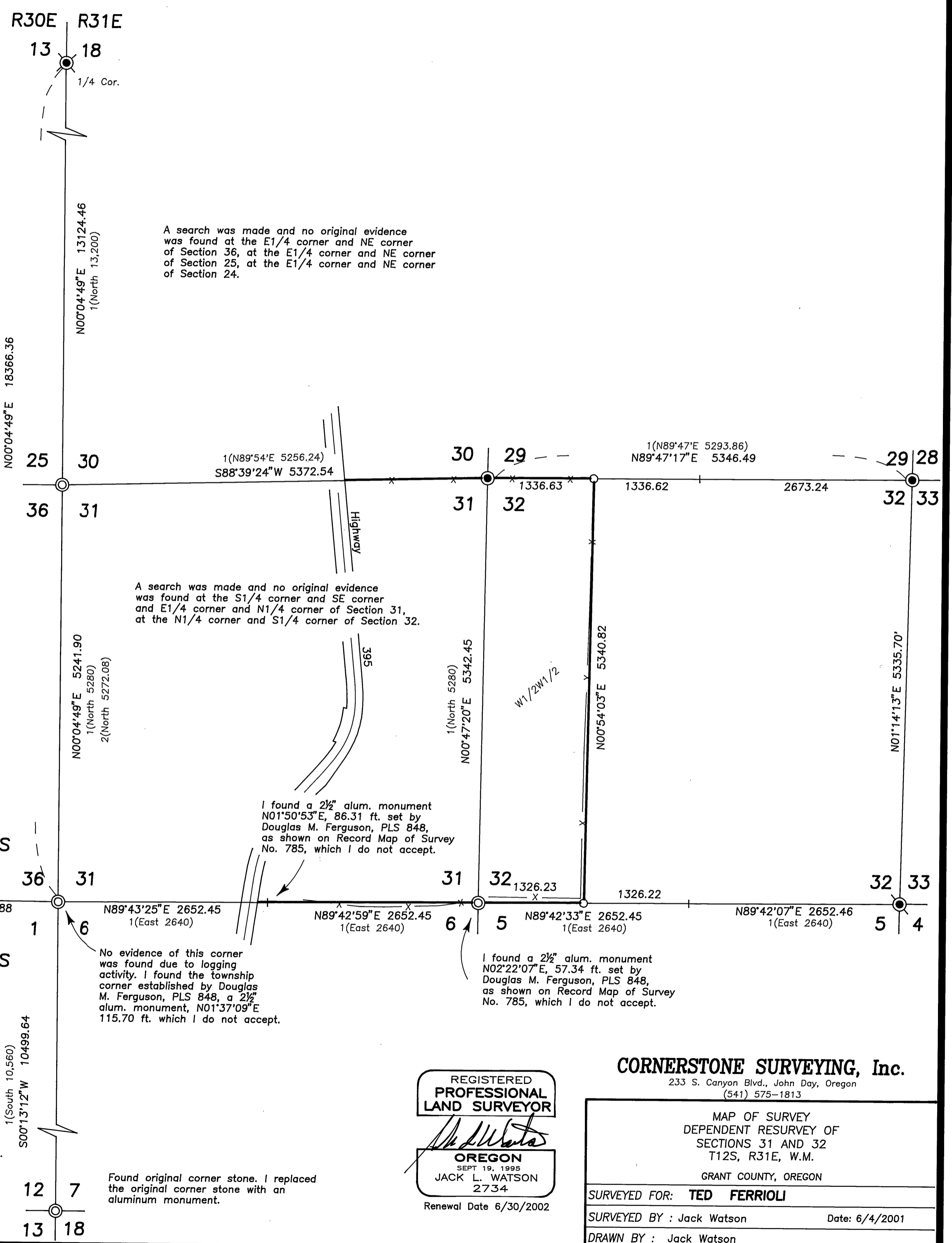




**LEGEND**

- ⊗ Found 1 1/2" iron pipe with attached Grant County Surveyor brass cap, see Survey No. 348.
- ⊙ Found 2 1/2" aluminum pipe with attached alum. cap see Survey No. 785.
- Found 2 1/2" aluminum pipe with attached alum. cap See Survey No. 859.
- ⊙ Set 2 1/2" aluminum pipe with attached 3" aluminum cap. See Corner Restoration records filed in the Grant County Surveyor's office for corner details.
- Set 5/8"x30" iron pin with attached 2" alum. cap. cap marked CORNERSTONE SURVEYING, INC. and the proper corner designation. See corner restoration records filed in the Grant County Surveyor's office for corner details.
- X—X Fence Line
- 1( ) GLO record bearing and distance, as returned by John B. David, under GLO Contract No. 131, dated 1869.
- 2( ) Record bearing and distance as per Survey No. 785.

See attached narrative.



RECEIVED AND FILED

July 18, 2001  
OFFICE OF COUNTY SURVEYOR  
Robert D. [Signature]  
Attest: [Signature]

A search was made and no original evidence was found at the E1/4 corner and SE corner of Section 1, at the E1/4 corner of Section 12.

REGISTERED PROFESSIONAL LAND SURVEYOR

JACK L. WATSON  
SEPT 19, 1995  
2734  
Renewal Date 6/30/2002

**CORNERSTONE SURVEYING, Inc.**  
233 S. Canyon Blvd., John Day, Oregon  
(541) 575-1813

MAP OF SURVEY DEPENDENT RESURVEY OF SECTIONS 31 AND 32 T12S, R31E, W.M. GRANT COUNTY, OREGON	
SURVEYED FOR: <b>TED FERRIOLI</b>	
SURVEYED BY: Jack Watson	Date: 6/4/2001
DRAWN BY: Jack Watson	