

PI STA = 713+29.35  
N = 295651.72  
E = 8672085.77  
I = 18°02'30"R

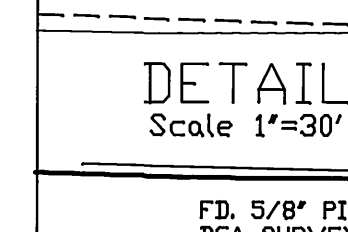
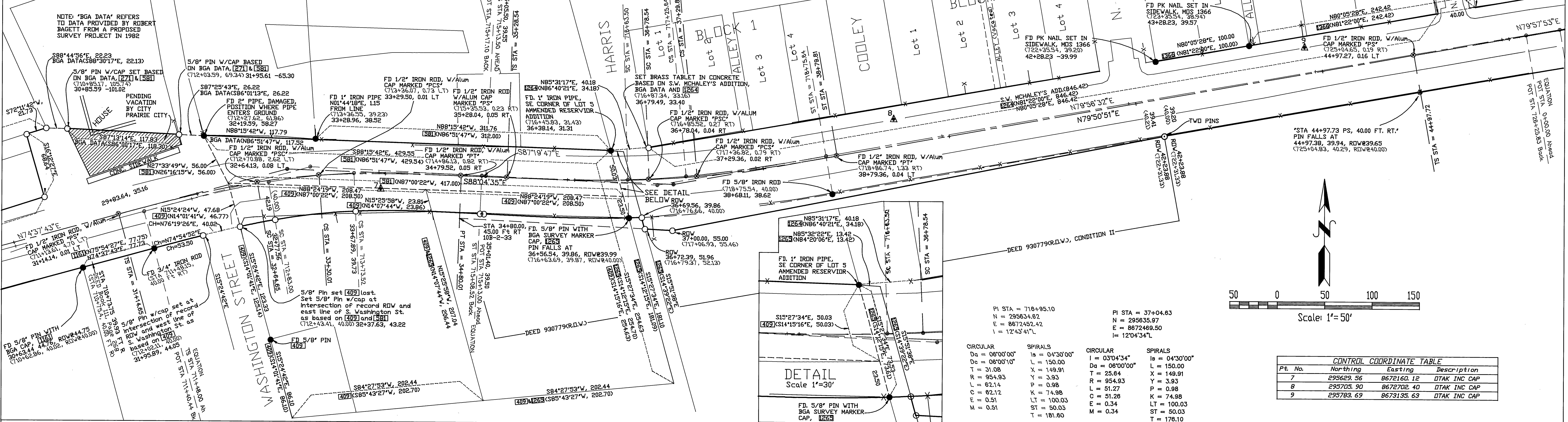
PI STA = 32+98.32  
N = 295649.67  
E = 8672061.44  
I = 17°13'44"R

CIRCULAR  
Da = 08'00'00"  
Dc = 08'00'23"  
T = 45.32  
R = 716.20  
L = 90.52  
C = 90.48  
E = 1.43  
M = 1.43

SPIRALS  
Ia = 05'24'00"  
L = 135.00  
X = 134.88  
Y = 4.24  
P = 1.06  
K = 57.48  
LT = 90.04  
ST = 45.04  
T = 181.35

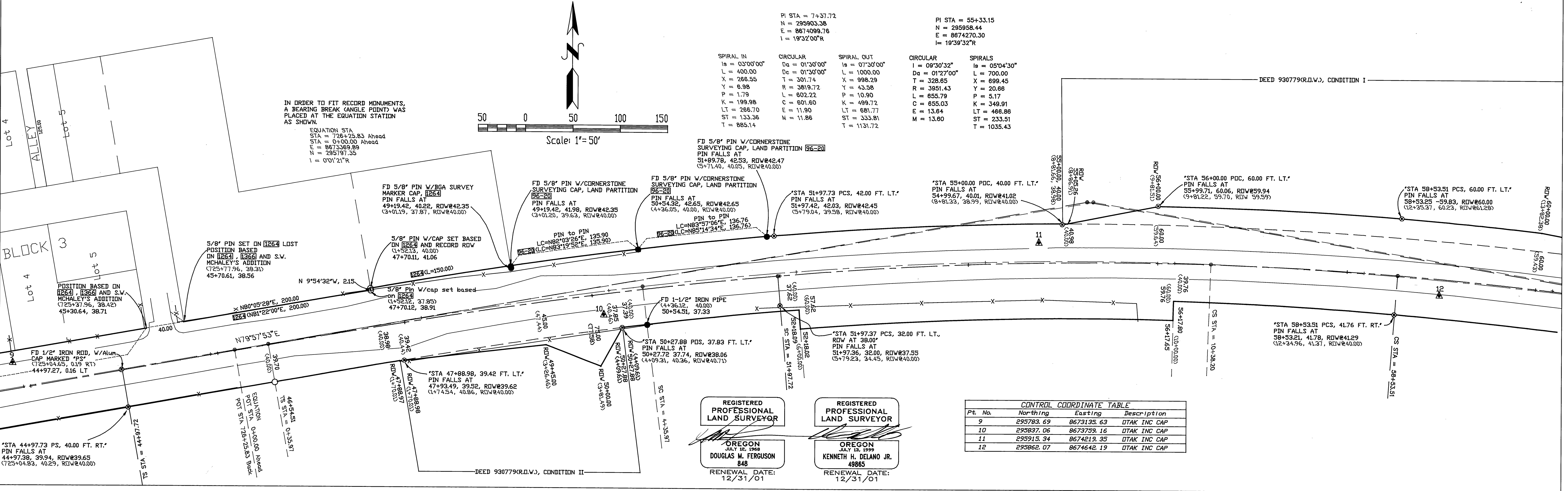
CIRCULAR  
Da = 05'13'44"  
Dc = 08'00'00"  
T = 32.70  
R = 716.20  
L = 65.36  
C = 65.34  
E = 0.75  
M = 0.75

SPIRALS  
Ia = 06'00'00"  
L = 150.00  
X = 149.84  
Y = 5.23  
P = 1.31  
K = 74.97  
LT = 100.06  
ST = 50.05  
T = 183.67



CONTROL COORDINATE TABLE

Pt. No.	Northing	Easting	Description
7	295629.56	8672160.12	DTAK INC CAP
8	295705.90	8672702.40	DTAK INC CAP
9	295783.69	8673153.63	DTAK INC CAP



REGISTERED PROFESSIONAL LAND SURVEYOR  
OREGON  
DOUGLAS M. FERUSON  
848  
RENEWAL DATE: 12/31/01

REGISTERED PROFESSIONAL LAND SURVEYOR  
OREGON  
KENNETH H. DELANO JR.  
4985  
RENEWAL DATE: 12/31/01

CONTROL COORDINATE TABLE

Pt. No.	Northing	Easting	Description
9	295783.69	8673153.63	DTAK INC CAP
10	295897.06	8673799.16	DTAK INC CAP
11	295915.34	8674219.35	DTAK INC CAP
12	295962.07	8674642.19	DTAK INC CAP