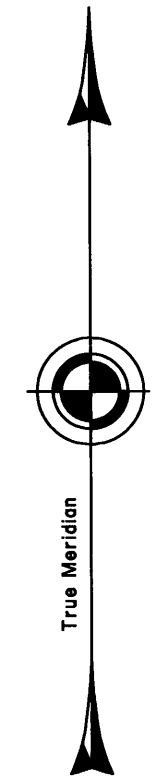


# TOWNSHIP 14 SOUTH, RANGE 31 EAST, OF THE WILLAMETTE MERIDIAN, OREGON

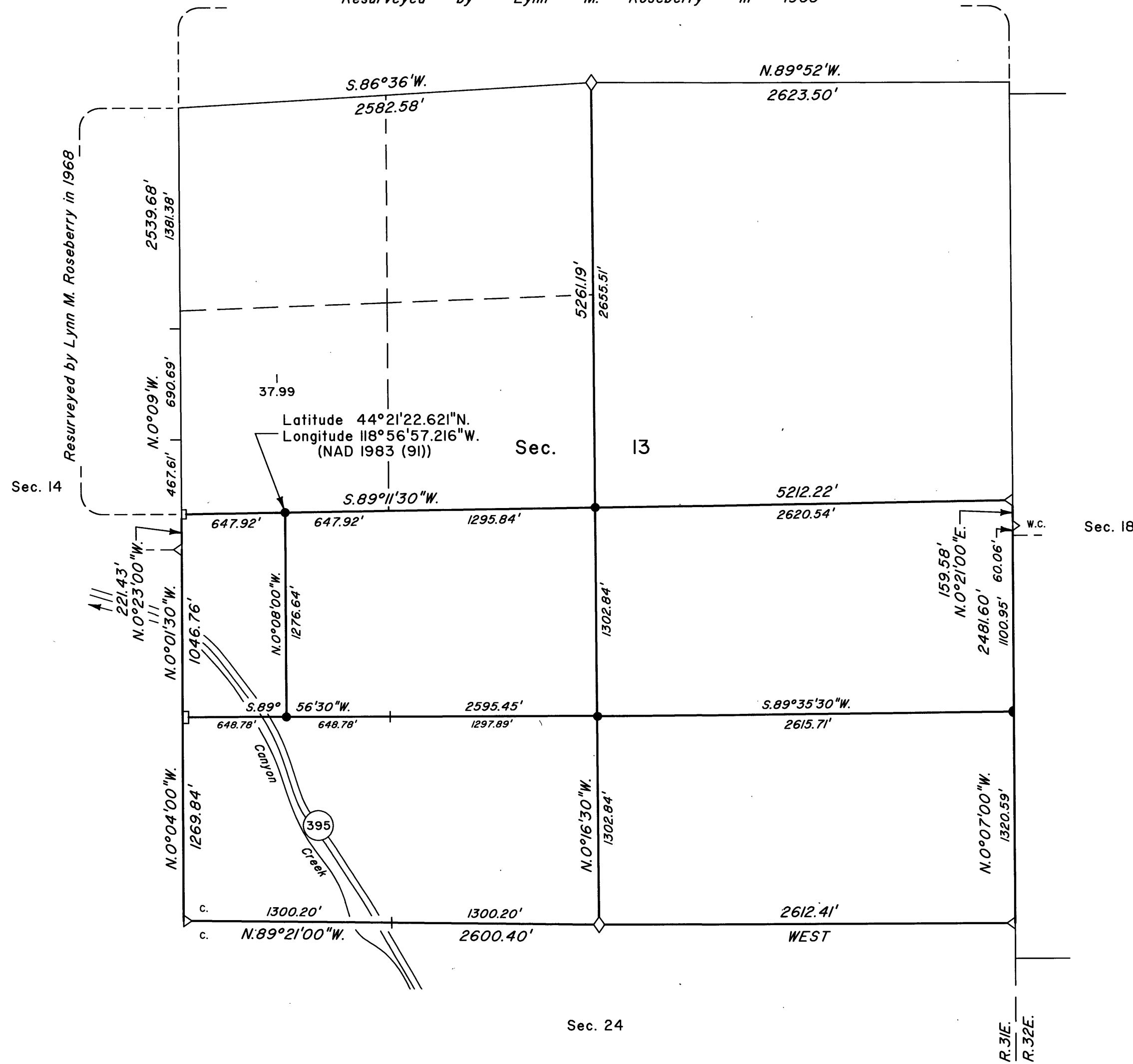
## DEPENDENT RESURVEY AND SUBDIVISION OF SECTION 13

Sec. 12

*Resurveyed by Lynn M. Roseberry in 1968*



Mean magnetic declination 16 1/2° East



A history of surveys is contained in the field notes.

This plat represents a dependent resurvey of a portion of the east boundary and subdivisional lines, T. 14 S., R. 31 E., Willamette Meridian, Oregon, designed to restore the corners in their true original locations according to the best available evidence, and the subdivision of section 13.

Except as shown hereon, the lottings and areas are as shown on the plat approved October 17, 1911.

The survey was executed by Philip G. Griffin, Cadastral Surveyor, beginning July 6, 1999, and completed November 4, 1999, pursuant to Special Instructions dated June 28, 1999, under Group Number 1922, Oregon.

Timber in this area consists of pine, fir, and juniper.

LEGEND	
◇	Original corner previously remonumented
□	Corner previously established or reestablished
●	Corner established or reestablished this survey

UNITED STATES DEPARTMENT OF THE INTERIOR  
BUREAU OF LAND MANAGEMENT

Portland, Oregon February 25, 2000

This plat is strictly conformable to the approved field notes, and the survey, having been correctly executed in accordance with the requirements of law and the regulations of this Bureau, is hereby accepted.

For the Director

Chief Cadastral Surveyor of Oregon

RECEIVED AND FILED

MAY 25, 2000

OFFICE OF COUNTY CLERK  
Clatsop County, Oregon

