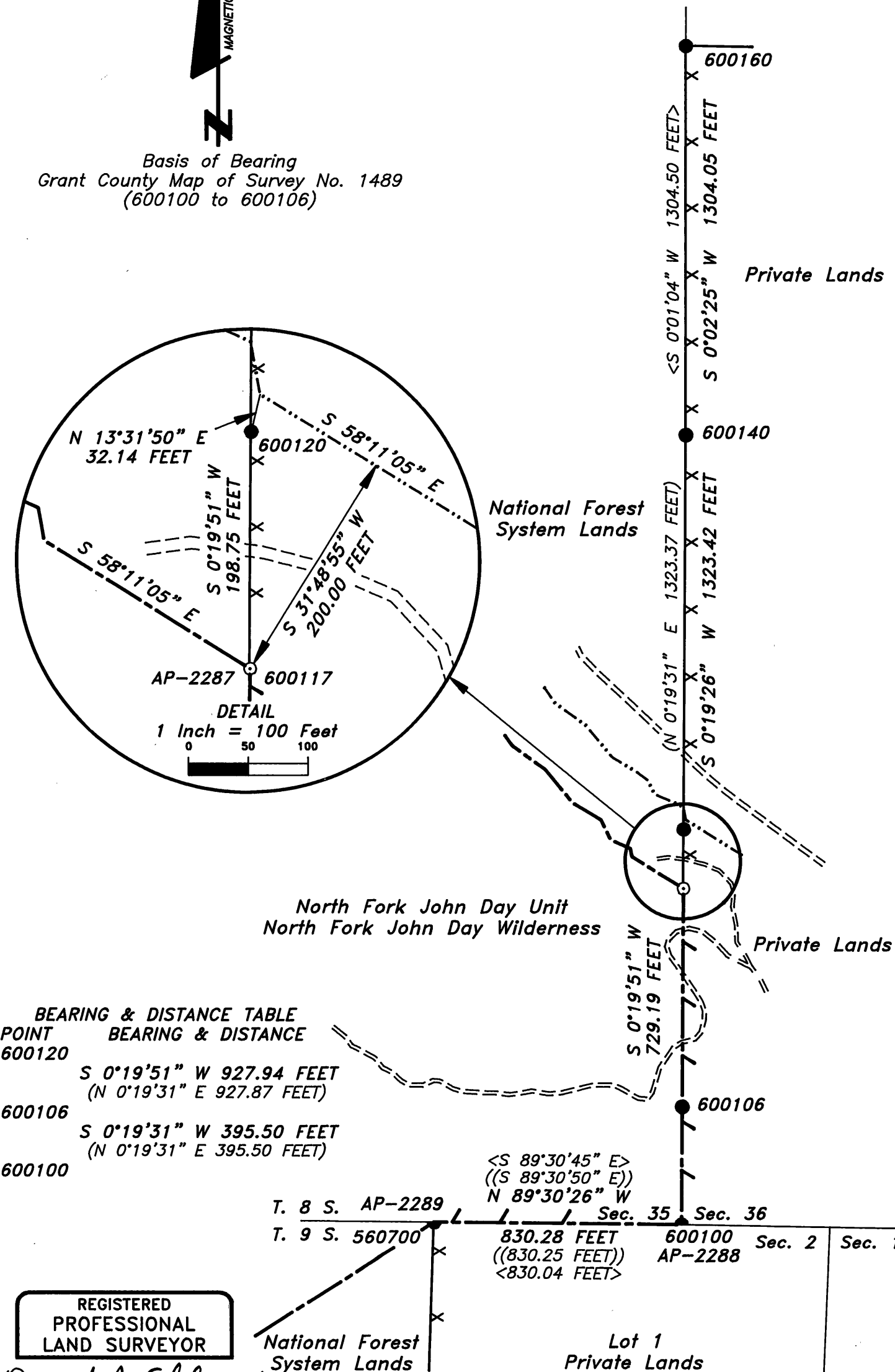


**Survey For  
Umatilla National Forest  
of  
AP-2265 to AP-2266 and AP-2287 to AP-2289  
North Fork John Day Unit  
North Fork John Day Wilderness  
Located in  
Section 35, Township 8 South, Range 35 East,  
Willamette Meridian  
Grant County, Oregon  
October - November, 1999**

**Basis of Bearing**  
Grant County Map of Survey No. 1489  
(600100 to 600106)



**600160**  
N 1/16 Corner of Sections 35 & 36

Found a 2 1/2" iron pipe, with 2 1/2" brass cap, projecting 4" out of the ground, marked as shown, from which:

22" Western Larch, N 82 3/4° E, 36.7 feet with healed double blaze.

11" Western Larch, S 52 1/4° W, 9.3 feet with healed double blaze.

**600140**  
1/4 Corner of Sections 35 & 36

Found a 2 1/2" iron pipe, with a 2 1/2" brass cap, projecting 5" out of the ground, marked as shown, from which:

10" Lodgepole Pine, N 10° E, 57.7 feet with scribing "1/4 S36" "BT" visible on a partially healed double blaze and 1 1/4" brass washer stamped "LS 1099" nailed to lower blaze.  
8" Lodgepole Pine, S 54 1/2° E, 27.0 feet with scribing "1/4 S36" "CSBT" visible on double blaze.  
10" Lodgepole Pine, S 11 3/4° W, 69.7 feet with scribing "1/4 S35" "CSBT" visible on double blaze.  
9" Lodgepole Pine, N 79 1/2° W, 48.0 feet with scribing "1/4 S35" "BT" visible on partially healed double blaze and 1 1/4" brass washer stamped "LS 1099" nailed to lower blaze.  
Remains of a downed snag with scribing visible at indeterminate bearing and distance (believed to be original S 10° W, 37 links BT).

**LEGEND**

- MONUMENT FOUND AND TIED
- MONUMENT SET
- ===== EXISTING ROAD
- MAIN THREAD OF CREEK
- WILDERNESS BOUNDARY
- X X PREVIOUSLY POSTED PROPERTY BOUNDARY
- POSTED PROPERTY & WILDERNESS BOUNDARY
- < > RECORD MEASUREMENT <LANGLITZ, 1984>
- ( ) RECORD MEASUREMENT (BAGETT, 1998)
- (( )) RECORD MEASUREMENT ((BAGETT, 1999))

SCALE: 1 INCH = 400 FEET

240 120 0 400 800

SCALE IN METERS      SCALE IN FEET

1 METER = 3.2808333 FEET

**600120**  
S 1/16 Corner of Sections 35 & 36

Found a 1 1/2" aluminum cap, set flush with the ground, marked as shown, from which:

1 1/2" iron pipe projecting 11" out of the ground, S 65°42' W, 9.16 feet.

Marked New BT's:

13" Lodgepole Pine, S 48 3/4° E, 8.4 feet scribed "S1/16 S36" "BT".  
7" Lodgepole Pine, N 82 3/4° W, 41.0 feet scribed "S1/16 S35" "BT".

**600117**  
AP-2287 of North Fork John Day Unit

Set a 2 1/2" by 30" aluminum pipe, with a 3 1/4" aluminum cap, 22" in the ground, marked as shown, from which:

5" Lodgepole Pine, N 77 3/4° E, 19.4 feet scribed "WB/2287 S36" "BT".

9" Lodgepole Pine, N 73 1/4° W, 24.8 feet scribed "WB/2287 S35" "BT".

**600106**  
Witness Point for Pedracini

Found a 5/8" rebar, with a 1 1/3" yellow plastic cap, projecting 2" out of the ground, marked as shown.

**600100**  
Corner of Sections 35 & 36  
AP-2288 of North Fork John Day Unit

Found a 2 1/2" iron pipe, with 2 1/2" brass cap, projecting 8" out of the ground, surrounded by a ring of stones, marked as shown, from which:

15" Lodgepole Pine, S 52 3/4° E, 195.0 feet with scribing visible on pitched over double blaze and 1 1/4" brass washer stamped "LS 1099" nailed to lower blaze.  
12" Lodgepole Pine, N 17 3/4° W, 94.9 feet with scribing "T8S R35E S35" "BT" visible on double blaze and 3/4" brass washer stamped "LS 1639" nailed to lower blaze.  
12" Lodgepole Pine, N 1 1/2° W, 106.0 feet with scribing "T8S R35E S35" "BT" visible on single blaze and 3/4" brass washer stamped "LS 1639" nailed to lower blaze.

New Reference:

RM, 5/8" by 24" rebar with 1 1/3" red plastic cap stamped "UMATILLA N.F." set 17" in the ground, N 77°47' W, 90.44 feet.

**560700**  
E 1/16 Corner of Section 2, T 9 S, R 35 E  
AP-2289 of North Fork John Day Unit

Found a 2 1/2" brass disk set in concrete in a hole in a rock outcrop, marked as shown, from which:

8" Lodgepole Pine, S 67 1/4° E, 106.4 feet with scribing "E1/16 S2" "BT" visible on a partially healed double blaze and 1 1/4" brass washer stamped "LS 1099" nailed to lower blaze.  
8" Lodgepole Pine, S 13 1/2° W, 44.9 feet with scribing "E1/16 S2" "BT" visible on a partially healed double blaze and 1 1/4" brass washer stamped "LS 1099" nailed to lower blaze.  
5/8" rebar, projecting 8" out of the ground, N 55°28' E, 9.64 feet.

REGISTERED  
PROFESSIONAL  
LAND SURVEYOR

*David A. Schlaich*  
OREGON  
JULY 16, 1987  
DAVID A. SCHLAICH  
2308

RENEWAL DATE: 06/30/2000

