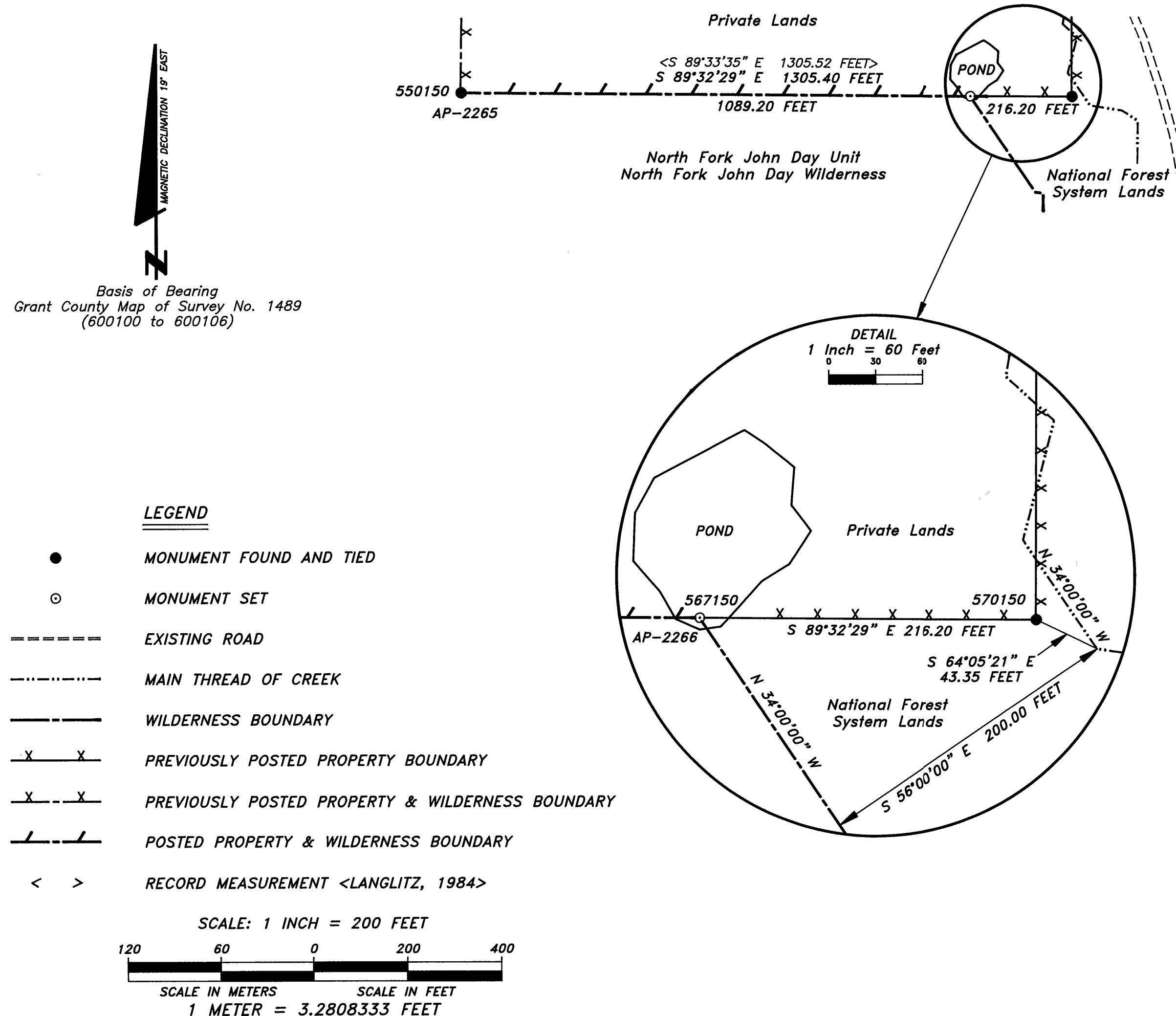


**Survey For
Umatilla National Forest
of
AP-2265 to AP-2266 and AP-2287 to AP-2289
North Fork John Day Unit
North Fork John Day Wilderness
Located in
Section 35, Township 8 South, Range 35 East,
Willamette Meridian
Grant County, Oregon
October - November, 1999**



550150
SW-NE 1/64 Corner of Section 35
AP-2265 of North Fork John Day Unit

Found a 2 1/2" brass cap set flush with the top of a stone mound, 2' in diameter by 8" high, marked as shown, from which:

11" Western Larch, S 38 3/4° W, 15.1 feet with healed double blaze.
12" White Fir, N 46° W, 4.5 feet with healed double blaze.

567150
AP-2266 of North Fork John Day Unit

Set a 5/8" by 36" rebar, with a 3 1/4" aluminum cap, 30" into the bottom of small pond and 6" below the pond's surface, marked as shown, from which:

RM, 5/8" by 24" rebar with a 3 1/4" aluminum cap, set flush with the ground, S 34°02' E, 22.21 feet, stamped "RM WB2266 22.21 FT RLS 2308 1999" with an arrow pointing towards the corner.

8" Lodgepole Pine, N 86 1/4° W, 21.0 feet, scribed "WB/2266" "BT".

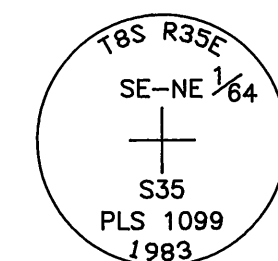
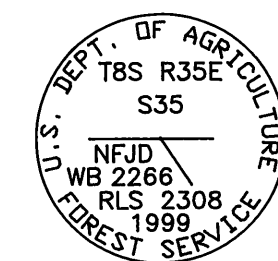
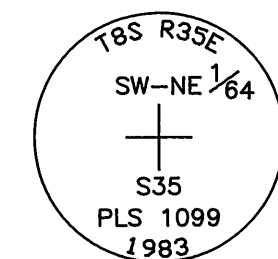
570150
SE-NE 1/64 Corner of Section 35

Found a 2 1/2" iron pipe, with a 2 1/2" brass cap,
projecting 4" out of the ground, marked as shown,
from which:

10" Lodgepole Pine, S 20 1/2° W, 51.7 feet, with scribing visible on almost completely healed double blaze and 1 1/4" brass washer stamped "LS 1099" nailed to the lower blaze.

12" Lodgepole Pine, N 80 3/4° W, 59.3 feet, with scribing visible on partially healed double blaze and 1 1/4" brass washer stamped "LS 1099" nailed to the lower blaze.

5/8" rebar projecting 10" out of the ground, S 72°39' E, 3.90 feet.



REGISTERED
PROFESSIONAL
LAND SURVEYOR

David A Schluch

OREGON
JULY 16, 1987
DAVID A. SCHLAICH
2308

RENEWAL DATE: 06/30/2000