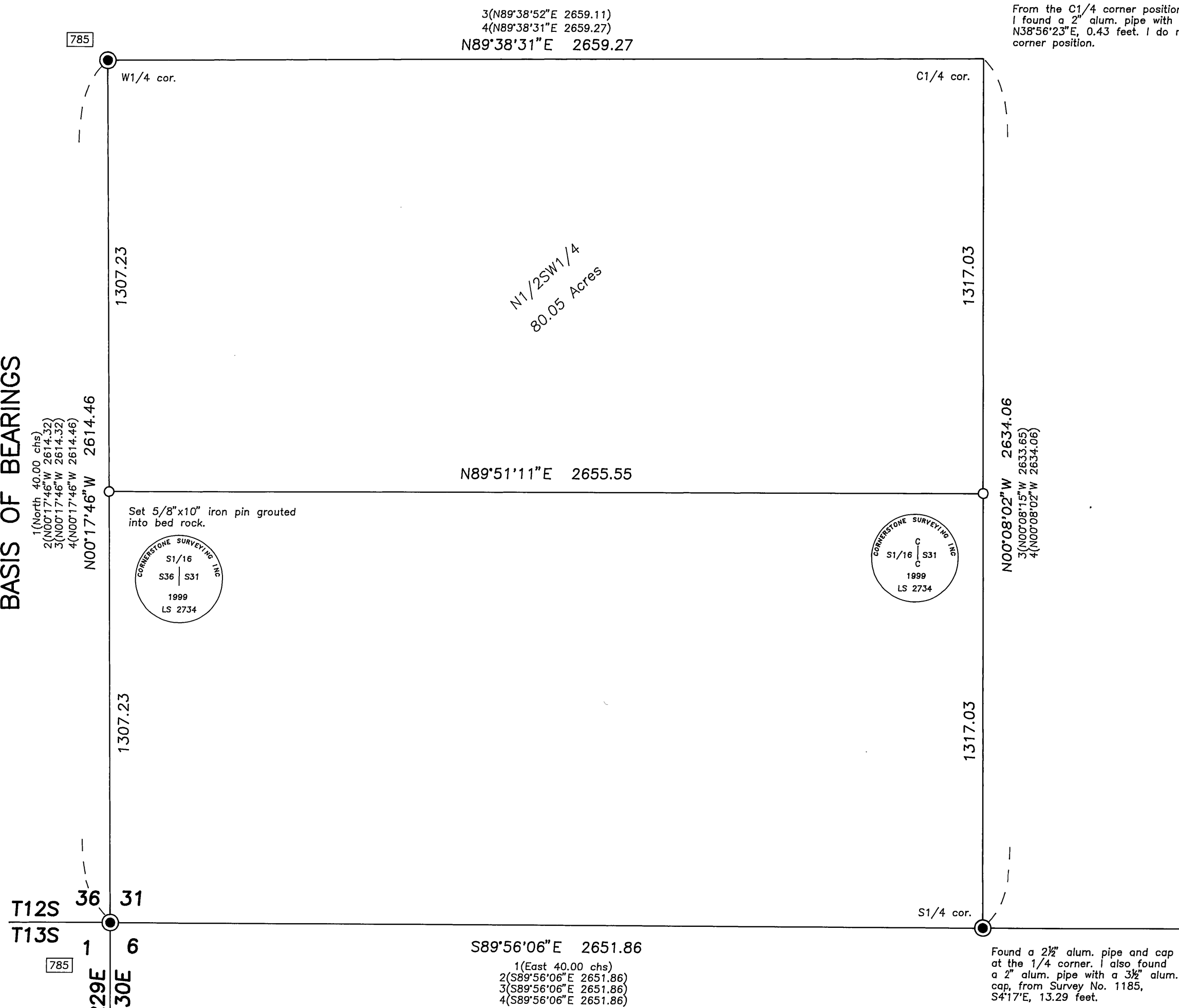


BASIS OF BEARINGS



From the C1/4 corner position as shown on Map of Survey No. 1525 I found a 2" alum. pipe with a 3 1/2" alum. cap, from Survey No. 1185, N38°56'23"E, 0.43 feet. I do not accept this monument for the C1/4 corner position.



Scale 1"=300'

BASIS OF BEARINGS

Record Map of Survey No. 785

LEGEND

- Found 2" aluminum pipe with attached 3 1/2" aluminum cap, unless otherwise shown.
- Set 5/8"x30" iron pin with attached 2" alum. cap unless otherwise shown. See remon sheets filed separately for details.
- 1() GLO record bearing and distance.
- 2() Record bearing and distance, Survey No. 785.
- 3() Record bearing and distance, Survey No. 1185.
- 4() Record bearing and distance, Survey No. 1525.
- Found monument, see record map of survey number shown in box.

Narrative.

This survey was performed at the request of Tom Thomsen. The purpose of this survey was to establish the south line of the N1/2SW1/4 of Section 31, as shown.

After searching the available records pertaining to this survey, I found three surveys by Doug Ferguson, Survey No. 785, performed in 1983 and Survey No. 1185, performed in 1991 and Survey No. 1525, performed in 1999. I found the W1/4 corner and the SW corner of Section 31, as shown on Survey No. 785, and I accept their positions. I set the S1/16 corner on line and at the mid point between the found monuments.

I also found and tied the S1/4 corner of Section 31, set during Survey No. 1185, which I found to be out of position by about 14 feet. I then surveyed to the C1/4 corner and the E1/4 corner and the SE corner of Section 31. Which revealed that the SE corner of Section 31 was also out of position. I informed Mr. Ferguson of the problem and he agreed to investigate.

Mr. Ferguson performed Survey No. 1525, which is the corrective survey in Section 31. I tied and accepted the new monument at the S1/4 corner and at the SE corner of Section 31. I used the record measurement, as shown on Survey No. 1525, from the monument at the C1/4 corner to position the C1/4 corner. I set the CS1/16 corner on line and at the mid point between the position of the C1/4 corner and the monument at the S1/4 corner.

RECEIVED AND
FILED

Nov. 3, 1999

OFFICE OF COUNTY SURVEYOR
Attest: *[Signature]*

REGISTERED
PROFESSIONAL
LAND SURVEYOR

[Signature]
OREGON
SEPT 19, 1995
JACK L. WATSON
2734

Renewal Date 6/30/2000



CORNERSTONE SURVEYING, Inc.

233 S. Canyon Blvd., John Day, Oregon 97845
(541) 575-1813

MAP OF SURVEY
SUBDIVISION OF THE SW1/4 OF SECTION 31
T12S, R30E, W.M.

GRANT COUNTY, OREGON

SURVEYED FOR: **Tom Thomsen**

SURVEYED BY: Jack Watson

Date: 09/08/99

DRAWN BY: Jack Watson

MAP OF SURVEY No. 1530