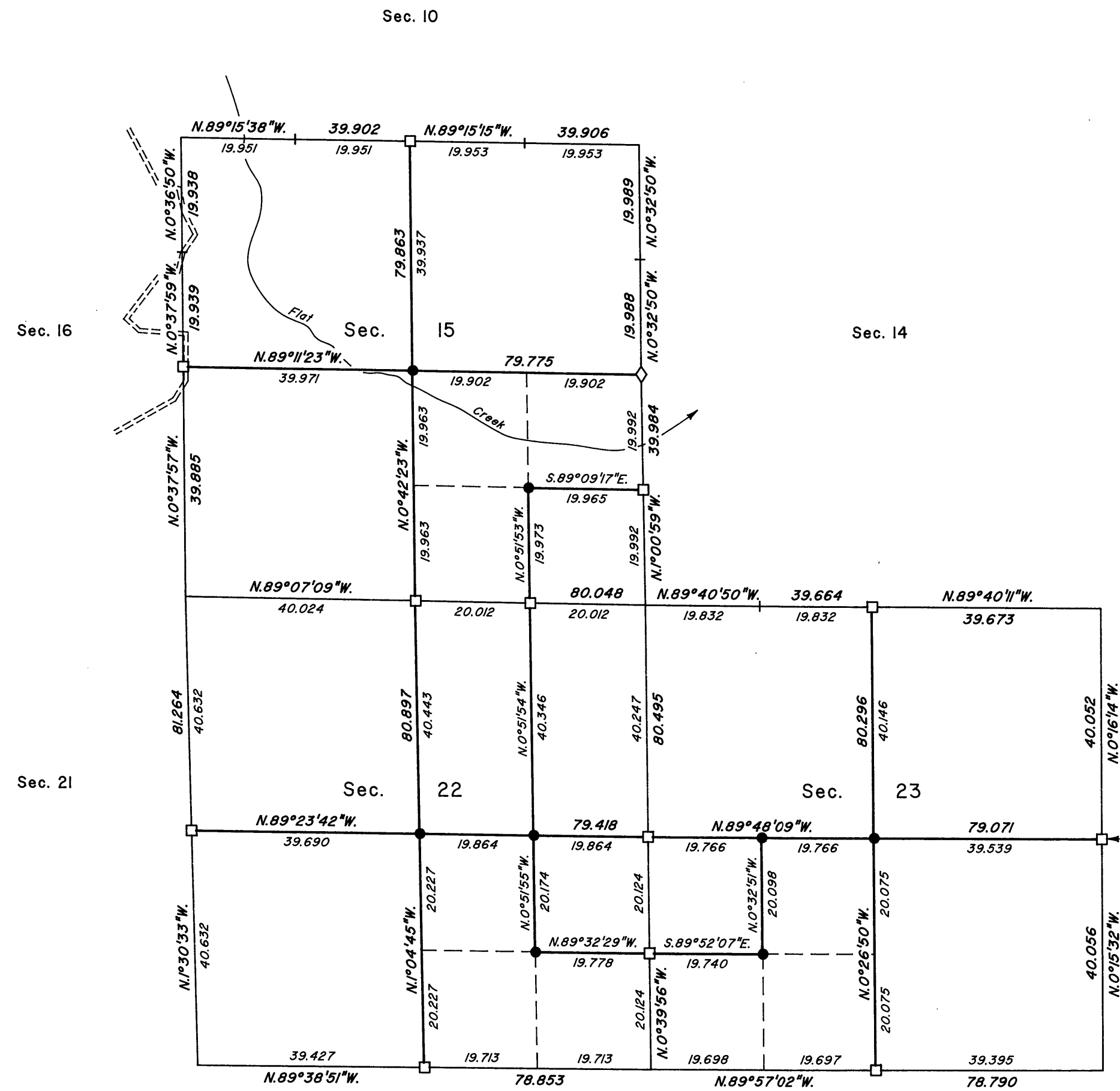
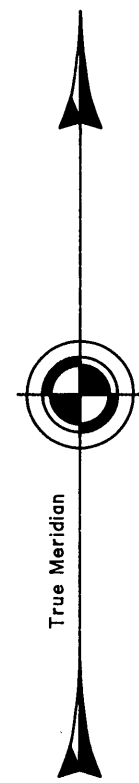


TOWNSHIP 18 SOUTH, RANGE 27 EAST, OF THE WILLAMETTE MERIDIAN, OREGON
SUBDIVISION OF SECTIONS 15, 22, AND 23



A history of surveys is contained in the field notes.

This plat represents the subdivision of sections 15, 22, and 23, T. 18 S., R. 27 E., Willamette Meridian, Oregon.

Measured distances and directions have been adjusted by Cadastral Measurement Management (CMM), a computer program that incorporates a least squares adjustment routine. The adjusted bearings and distances are reported to the nearest second and 0.001 chain.

The lottings and areas are as shown on the plat approved October 26, 1874, and the plat accepted June 1, 1995.

The survey was executed by Richard S. Kaiser, Cadastral Surveyor, beginning June 10, 1997, and completed July 1, 1997, pursuant to Special Instructions dated May 1, 1997, under Group Number 1838, Oregon.

Timber in this area consists of Douglas fir, ponderosa pine, lodgepole pine, and juniper.

NOTE:

The lightweight section lines were resurveyed by Daniel E. Weller in 1992-93.

At the request of the U.S. Forest Service, the true area for each quarter-quarter section is reported for all lands under their jurisdiction. Where the true area is within 5% of the record area, the quarter-quarter section will retain its aliquot part designation even though the area changes. The quarter-quarter section will continue to be divided by legal subdivision. Where the record area changes by more than 5% or the quarter-quarter section is badly distorted, it has been assigned a lot number and may be further divided only by supplemental plat.

LEGEND

- ◇ Original corner previously remonumented
- Corner previously established or reestablished
- Corner established or reestablished this survey

UNITED STATES DEPARTMENT OF THE INTERIOR
BUREAU OF LAND MANAGEMENT

Portland, Oregon January 22, 1999

This plat is strictly conformable to the approved field notes, and the survey, having been correctly executed in accordance with the requirements of law and the regulations of this Bureau, is hereby accepted.

For the Director

Wayne M. Hardner
Chief Cadastral Surveyor of Oregon

RECEIVED AND
FILED

JUN 17 1999

Wayne M. Hardner

LEGAL SUBDIVISION	OFFICIAL AREA
SECTION 15	
SE 1/4 NE 1/4	39.78 Acres
SW 1/4 NE 1/4	39.76 Acres
NE 1/4 SE 1/4	39.81 Acres
SW 1/4 SE 1/4	39.90 Acres
NW 1/4 SE 1/4	39.79 Acres
NE 1/4 SW 1/4	39.89 Acres
SE 1/4 SW 1/4	39.91 Acres
SW 1/4 SW 1/4	39.89 Acres
NW 1/4 SW 1/4	39.86 Acres
SE 1/4 NW 1/4	39.86 Acres
SW 1/4 NW 1/4	39.83 Acres

LEGAL SUBDIVISION	OFFICIAL AREA
SECTION 22	
SW 1/4 NE 1/4	40.17 Acres
NW 1/4 NE 1/4	40.32 Acres
SE 1/4 SE 1/4	39.78 Acres
SW 1/4 SE 1/4	39.87 Acres
NW 1/4 SE 1/4	40.02 Acres
NE 1/4 SW 1/4	40.11 Acres
SE 1/4 SW 1/4	39.97 Acres
SW 1/4 SW 1/4	40.06 Acres
NW 1/4 SW 1/4	40.21 Acres
NE 1/4 NW 1/4	40.41 Acres
SE 1/4 NW 1/4	40.26 Acres
SW 1/4 NW 1/4	40.35 Acres
NW 1/4 NW 1/4	40.50 Acres

LEGAL SUBDIVISION	OFFICIAL AREA
SECTION 23	
NE 1/4 NE 1/4	39.72 Acres
SE 1/4 NE 1/4	39.65 Acres
SW 1/4 NE 1/4	39.70 Acres
NW 1/4 NE 1/4	39.77 Acres
NE 1/4 SE 1/4	39.58 Acres
SE 1/4 SE 1/4	39.51 Acres
SW 1/4 SE 1/4	39.55 Acres
NW 1/4 SE 1/4	39.63 Acres
NE 1/4 SW 1/4	39.67 Acres
SE 1/4 SW 1/4	39.60 Acres
SW 1/4 SW 1/4	39.65 Acres
NE 1/4 NW 1/4	39.80 Acres
SE 1/4 NW 1/4	39.74 Acres

