

NARRATIVE

THIS SURVEY WAS PERFORMED AT THE REQUEST OF DON AND ROSE PEDRACINI. THE PURPOSE OF THIS SURVEY WAS TO ESTABLISH THE WEST AND SOUTHERLY BOUNDARY LINE OF THE PEDRACINI TRACT AS DESCRIBED IN INSTRUMENT NO. 981016 DEED RECORDS AND ALSO, TO SET THE CORNERS OF THIS TRACT ALONG THE WEST AND SOUTHERLY LINES.

A SEARCH WAS MADE OF THE AVAILABLE RECORDS PERTAINING TO THIS SURVEY. FIELD MEASUREMENTS WERE MADE TO LOCATE EXISTING CONTROLLING MONUMENTS, AS SHOWN HEREON.

WE RETRACED THE S1/2 OF THE WEST LINE AND THE W1/2 OF THE SOUTH LINE OF SECTION 36. WE FOUND MONUMENTS AT THE SW CORNER AND THE S1/4 CORNER OF SECTION 36 AND AT THE CLOSING CORNER BETWEEN SECTIONS 1 AND 2 AS SHOWN. THESE WERE SET IN 1979 BY WILLIAM HANLEY, PLS 1639, DURING RECORD SURVEY NO. 575. WE FOUND THE MONUMENT AT THE W1/4 CORNER OF SECTION 36 AS SHOWN. THIS MONUMENT WAS SET IN 1984 BY GARY LANGLITZ, PLS 1099, DURING RECORD SURVEY NO. 828. ALL OF THE ABOVE CORNERS WERE REMONUMENTED FROM ORIGINAL EVIDENCE EXCEPT THE CLOSING CORNER OF SECTIONS 1 AND 2, WHICH WAS PROPORTIONED AND HAS NO EFFECT ON THIS SURVEY. I ACCEPT THE POSITIONS OF THESE MONUMENTS FOR THE CONTROLLING CORNERS OF THIS SURVEY.

I ESTABLISH THE S1/16 CORNER ON THE WEST BOUNDARY OF SECTION 36 AT MIDPOINT BETWEEN THE SW CORNER AND THE W1/4 CORNER MONUMENTS. I ESTABLISH THE W1/16 CORNER AT MIDPOINT BETWEEN THE SW CORNER AND THE S1/4 CORNER MONUMENTS.

I HELD THE DEED DISTANCE NORTH ALONG THE WEST SECTION LINE FROM THE SW CORNER OF SECTION 36 TO ESTABLISH THE SW CORNER OF THE PEDRACINI TRACT.

I HELD THE DEED DISTANCE ALONG THE SOUTH LINE OF THE SECTION FROM THE SW CORNER OF SEC. 36 TO ESTABLISH THE ANGLE POINT IN THE SOUTHERLY BOUNDARY OF THIS TRACT.

WE FOUND A 1 INCH IRON PIPE NEAR THE S1/16 CORNER AS SHOWN HEREON. I BELIEVE THIS TO BE THE POSITION OF THE PIN SET BY DON STAEBLER, PE 5408, IN 1965 DURING RECORD SURVEY NO. 924. MR. STAEBLER STATES THAT HE SET A TEMPORARY CORNER HERE. MR. STAEBLER DID NOT FIND THE W1/4 CORNER OF SECTION 36, BUT DID FIND THE NW CORNER OF THE SECTION. HE PLACED HIS TEMPORARY CORNER AT PROPORTIONATE MEASURE BETWEEN THE SW AND NW CORNERS OF THE SECTION. THIS EXPLAINS WHY WE FOUND HIS PIPE S.65°53'W., 9.15 FEET FROM THE S1/16 CORNER THAT WE SET.

WE FOUND A 1-1/2 INCH IRON PIN NEAR THE W1/16 CORNER ON THE SOUTH BOUNDARY OF SECTION 36. THIS PIN IS UNRECORDED AND WAS SET BY PERSONS UNKNOWN. MR. AND MRS. PEDRACINI DID NOT KNOW WHO SET THE PIN OR WHY.

WE POSTED THE WEST AND SOUTHERLY LINES OF THIS TRACT WITH LATH AND FLAGGING.

I FOUND NO UNUSUAL CONDITIONS WITH THIS SURVEY.

BASIS OF BEARINGS

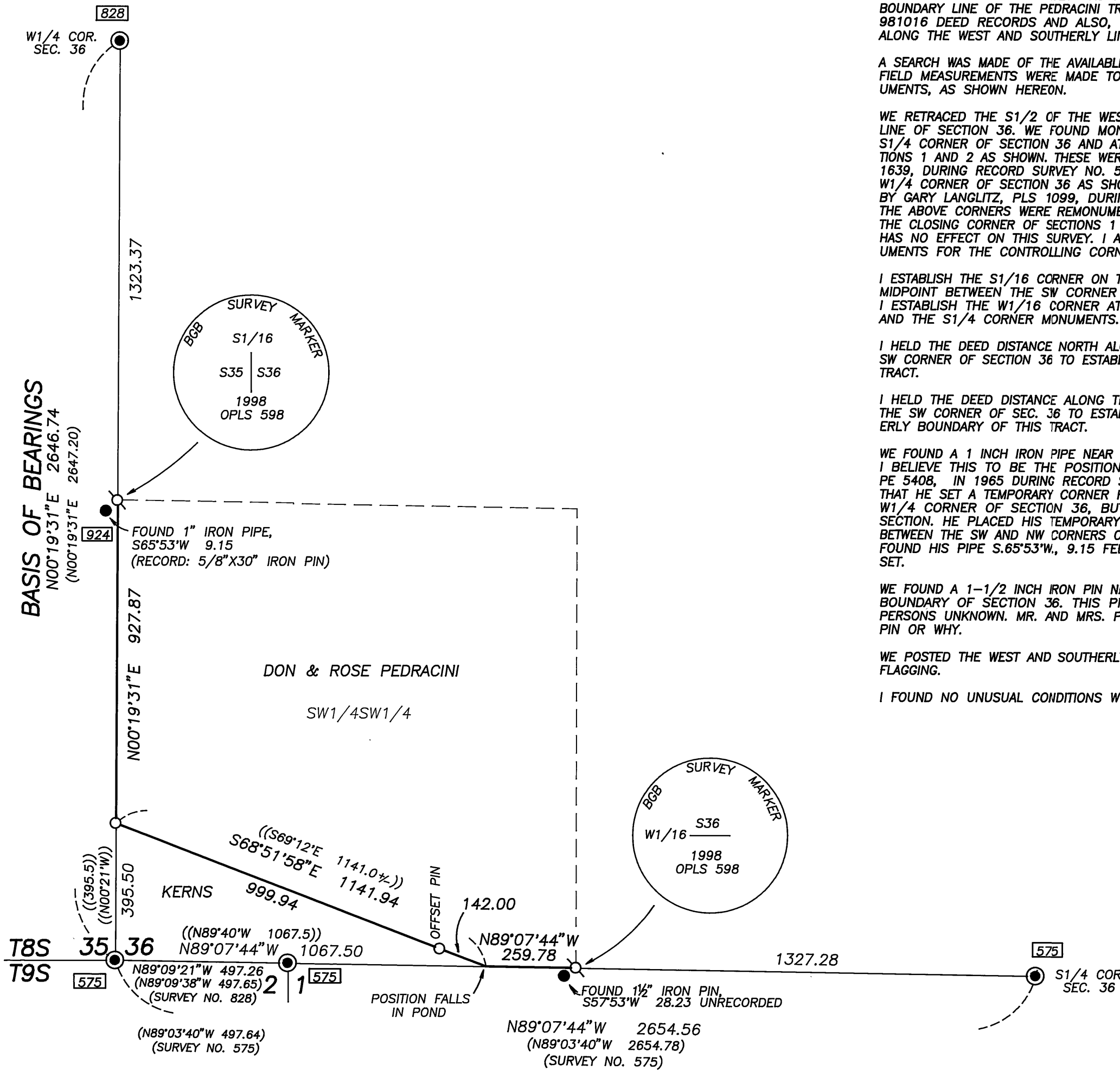
RECORD MAP OF SURVEY NO. 828  
AS SHOWN

REFERENCES

RECORD MAP OF SURVEY NO.'S 575, 828 & 924  
DEED RECORD INSTRUMENT NO. 981016

LEGEND

- FOUND 2 1/2 GALV. IRON PIPE WITH ATTACHED 2 1/2 BRASS CAP.
- FOUND MONUMENT AS SHOWN.
- SET 5/8"X30" IRON PIN WITH ATTACHED YELLOW PLASTIC CAP MARKED BGG SURVEY MARKER.
- SET 5/8"X30" IRON PIN WITH ATTACHED ALUMINUM CAP MARKED BGG SURVEY MARKER, AND WITH APPROPRIATE 1/16 CORNER DESIGNATIONS, AS SHOWN.
- ( ) RECORD BEARING AND DISTANCE
- (( )) DEED RECORD BEARING AND DISTANCE
- FOUND MONUMENT FROM RECORDED SURVEY NO. SURVEY NO. APPEARS IN BOX.



RECEIVED AND  
FILED

OCT. 13, 1998  
OFFICE OF COUNTY SURVEYOR

Robert D. Baggett  
ATTEST: M.C. Stry

REGISTERED  
PROFESSIONAL  
LAND SURVEYOR

Robert D. Baggett  
OREGON  
JULY 12, 1963  
ROBERT D. BAGGETT  
598

Renewal Date 12/31/99

BAGETT, GRIFFITH & BLACKMAN  
217 N. Canyon Blvd. John Day, Oregon

MAP OF SURVEY  
SITUATED IN THE  
SW1/4SW1/4 OF SEC. 36,  
T.8S., R.35E., W.M.,  
GRANT COUNTY, OREGON

SURVEYED FOR	DON PEDRACINI	
SURVEYED BY	RDB & SDF & MCS	9/3/98
Scale: 1"=300'	Drawn by: MCS	

RECORD MAP OF SURVEY NO. 1489