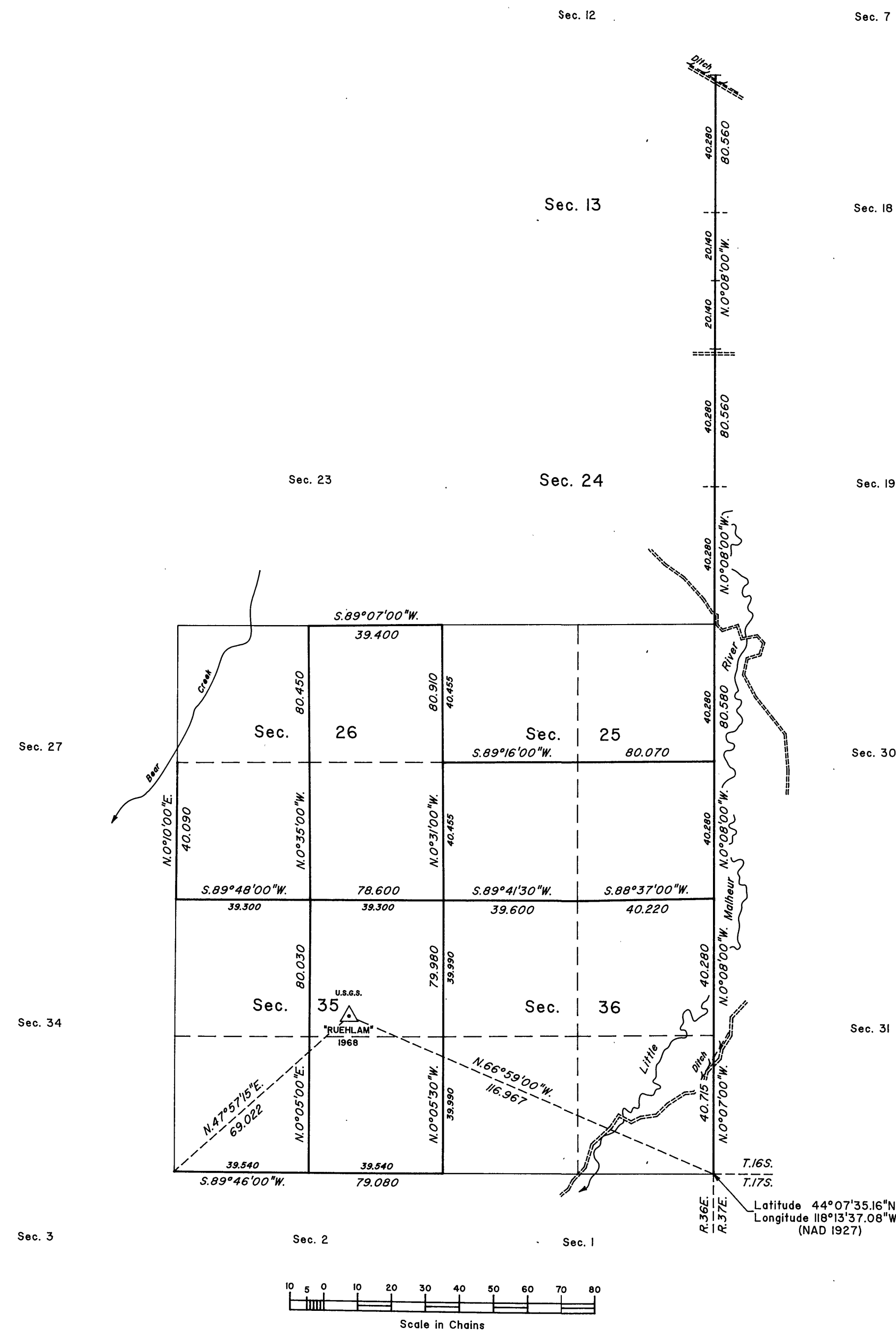
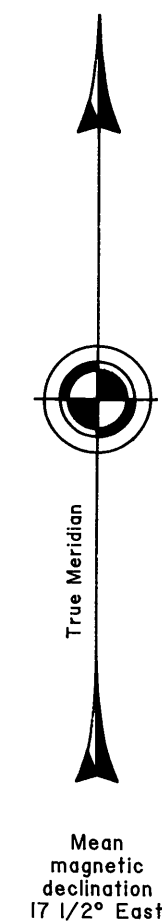


TOWNSHIP 16 SOUTH, RANGE 36 EAST, OF THE WILLAMETTE MERIDIAN, OREGON

DEPENDENT RESURVEY AND SUBDIVISION OF SECTIONS 25, 26, AND 35



A history of surveys is contained in the field notes.

This plat represents a dependent resurvey of portions of the south and east boundaries and subdivisional lines, T. 16 S., R. 36 E., Willamette Meridian, Oregon, designed to restore the corners in their true original locations according to the best available evidence, and the subdivision of sections 25, 26, and 35.

The areas are as shown on the plat approved March 30, 1882.

The survey was executed by Philip G. Griffin, Cadastral Surveyor, beginning November 1, 1994, and completed May 25, 1995, pursuant to Special Instructions dated October 31, 1994, under Group Number 1753, Oregon.

Timber in this area consists of pine, juniper, and mountain mahogany.

Ties to the geodetic control station are reported as mean bearing and sea level distance.

UNITED STATES DEPARTMENT OF THE INTERIOR
BUREAU OF LAND MANAGEMENT

Portland, Oregon October 28, 1996

This plat is strictly conformable to the approved field notes, and the survey, having been correctly executed in accordance with the requirements of law and the regulations of this Bureau, is hereby accepted.

For the Director

Wayne M. Hardner
Chief Cadastral Surveyor of Oregon

RECORDED AND
FILED

JUN 30 1997

Robert B. Griffith
Surveyor General

R.F.B.

MAP OF SURVEY NO. 1441