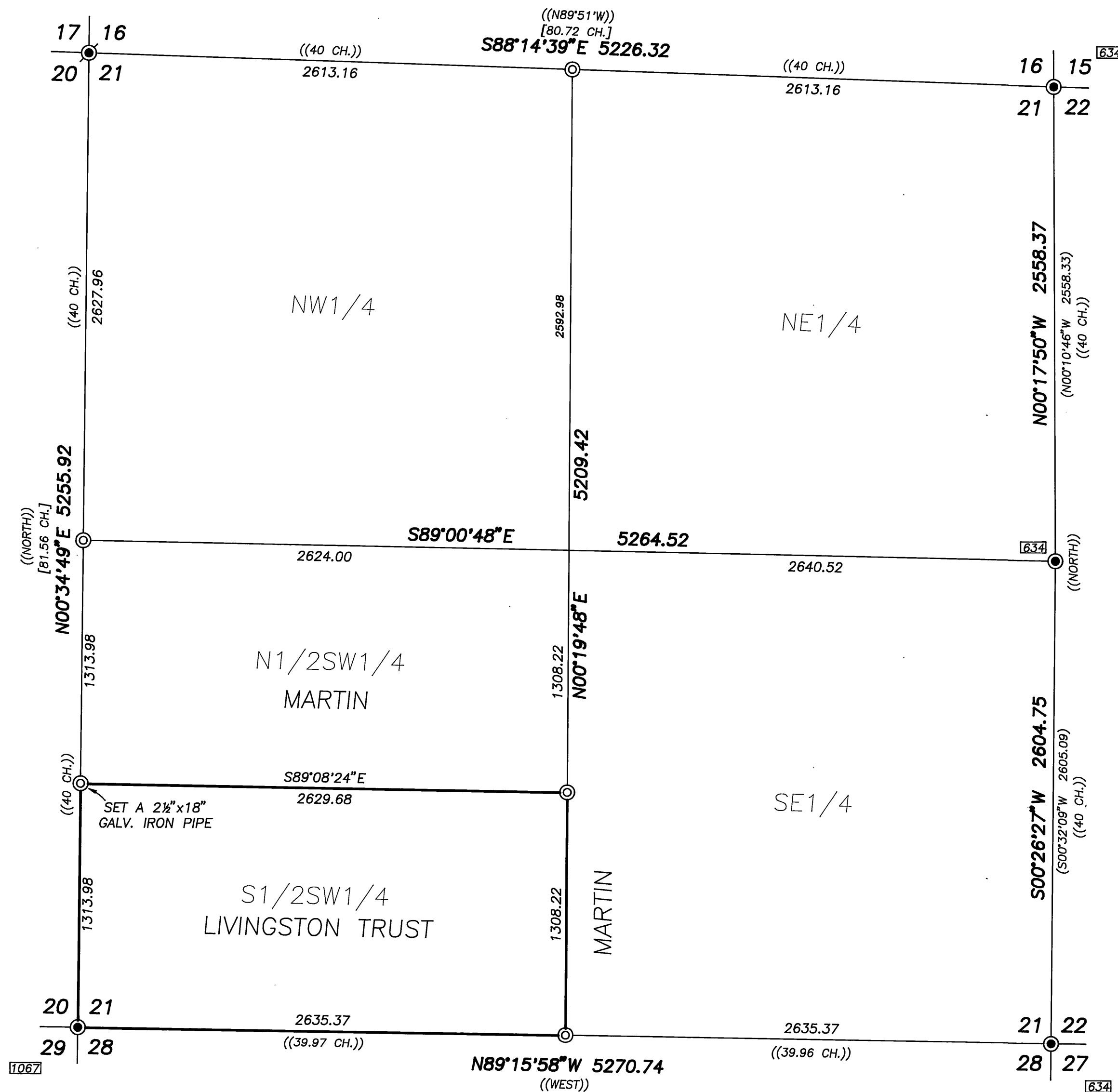


T10S, R31E



NARRATIVE

THIS SURVEY WAS PERFORMED AT THE REQUEST OF BILL HARRIS, AND SHARON LIVINGSTON, TRUSTEE, ACTING IN BEHALF OF THE LIVINGSTON TRUST AND BY CONNIE WOOD, ACTING IN BEHALF OF HERBERT AND NELDA MARTIN. THE PURPOSE OF THIS SURVEY WAS TO RETRACE THE EXTERIOR BOUNDARIES, SUBDIVIDE SECTION 21, MONUMENT THE CONTROLLING CORNERS AND THE CORNERS OF THE S1/2SW1/4, AND MARK THE NORTH AND EAST BOUNDARY OF THE S1/2SW1/4 WITH LATH AND FLAGGING.

A SEARCH WAS MADE OF THE AVAILABLE RECORDS PERTAINING TO THIS SURVEY. FIELD MEASUREMENTS WERE MADE TO LOCATE THE EXISTING CONTROLLING MONUMENTS OF THIS SECTION, AS SHOWN HEREON.

HISTORY OF SURVEYS:
MY RESEARCH DISCLOSED THAT THIS TOWNSHIP WAS ORIGINALLY SUBDIVIDED BY RUFUS S. MOORE, U.S. DEPUTY SURVEYOR, IN 1881. IN 1908 MICHAEL SPEARS, COUNTY SURVEYOR, RETRACED THE NORTH AND WEST BOUNDARIES OF THE SECTION. HE ESTABLISHED, AT DOUBLE PROPORTIONATE MEASURE, THE NORTHWEST CORNER OF SEC. 21. HE SEARCHED FOR, BUT DID NOT FIND THE NORTH 1/4 CORNER OR THE WEST 1/4 CORNER. SEE SPEARS' RECORD IN SURVEYOR'S RECORD BOOK NO. 1, PAGE 10-11.

IN 1980, CLELL GOODWIN, PLS 1078, UNDER CONTRACT WITH THE U.S. FOREST SERVICE, FOUND THE ORIGINAL CORNER STONE AT THE SE CORNER OF SEC. 21, AND REMONUMENTED IT.

IN 1980, CLELL GOODWIN FOUND AND ACCEPTED A STONE OF CALL SIZE AT THE E 1/4 CORNER OF SEC. 21. THIS POSITION WAS VERIFIED TO A FOREST SERVICE EMPLOYEE BY THE ADJOINING LANDOWNER. GOODWIN REMONUMENTED THIS POSITION.

IN 1980, RICHARD CLARK, PLS 1632, UNDER CONTRACT WITH THE U.S. FOREST SERVICE, ACCEPTED A STONE OF CALL SIZE AT THE NORTHEAST CORNER OF SEC. 21 AND REMONUMENTED IT. HE VERIFIED THE POSITION BY AGREEING WITH RECORD CALLS TO ROCK RIM LYING TO THE SOUTH AND EAST.

IN 1985, I FOUND SPEARS CORNER AT THE NW CORNER OF SEC. 21 AND REMONUMENTED THAT POSITION.

IN 1988, TYLER PARSONS, PLS 1918, UNDER CONTRACT WITH THE U.S. FOREST SERVICE, FOUND THE ORIGINAL CORNER STONE AT THE SW CORNER OF SEC. 21 AND REMONUMENTED IT.

UPON OUR RETRACEMENT, AND EXAMINATION OF THE EVIDENCE, I ACCEPTED THE MONUMENTS WE FOUND AS DESCRIBED ABOVE. WE SEARCHED FOR BUT DID NOT FIND THE N1/4 CORNER, THE W1/4 CORNER OR THE S1/4 CORNER. I THEREFORE ESTABLISH THESE 1/4 CORNERS AT SINGLE PROPORTIONATE MEASURE BETWEEN THE APPROPRIATE FOUND SECTION CORNERS.

WITH THE CONTROLLING CORNERS OF THE SECTION FOUND OR ESTABLISHED, I PROCEEDED TO SUBDIVIDE THE SECTION IN THE NORMAL MANNER, AS SHOWN HEREON, AND ESTABLISHED THE S1/16 CORNER ON THE WEST LINE OF SECTION 21 AND THE CS1/16 CORNER.

SEE CORNER REMONUMENTATION SHEETS FILED SEPARATELY IN THE REMONUMENTATION RECORDS, BUT AN INTEGRAL PART OF THIS SURVEY.

BASIS OF BEARINGS

SOLAR OBSERVATION
TAKEN APPROX. 1/2 MILE
WEST OF THE W1/4 COR. SEC. 21

LEGEND

- FOUND 2 1/2" ALUM. PIPE WITH ATTACHED ALUMINUM CAP.
- ⊙ FOUND 1 1/2" IRON PIPE WITH ATTACHED GRANT COUNTY SURVEYOR BRASS CAP.
- ⊙ SET 2 1/2"x30" GALV. IRON PIPE WITH ATTACHED BAGETT - GRIFFITH & BLACKMAN BRASS CAP, UNLESS OTHERWISE SHOWN.
- () RECORD MAP OF SURVEY NO. 634 RECORD BEARING AND DISTANCE
- (()) GLO RECORD BEARING AND DISTANCE
- [] SPEARS RECORD BEARING AND DISTANCE
- FOUND MONUMENT FROM RECORDED SURVEY NO. □ SURVEY NO. APPEARS IN BOX.

REFERENCES

GLO NOTES
SURVEYORS RECORD BOOK 1 PAGES 10-11
REMONUMENTATION RECORDS
RECORD MAP OF SURVEY NO.'S 634 AND 1067

RECEIVED AND
FILED

JAN 18, 1996
OFFICE OF COUNTY SURVEYOR

ATTEST:

REGISTERED
PROFESSIONAL
LAND SURVEYOR

OREGON
JULY 12, 1983
ROBERT D. BAGETT
598

Renewal Date 12/31/97

BAGETT, GRIFFITH & BLACKMAN
217 N. Canyon Blvd. John Day, Oregon

MAP OF SURVEY
DEPENDENT RESURVEY AND
SUBDIVISION OF SECTION 21, T10S, R31E. W.M.

GRANT COUNTY, OREGON

SURVEYED FOR	LIVINGSTON TRUST AND HERBERT MARTIN	
SURVEYED BY	RDB & SDF & GJR & DEM	11/15/95
Scale: 1"=500'	Drawn by: G.J.R.	TO 1/5/96

RECORD MAP OF SURVEY NO. 1392