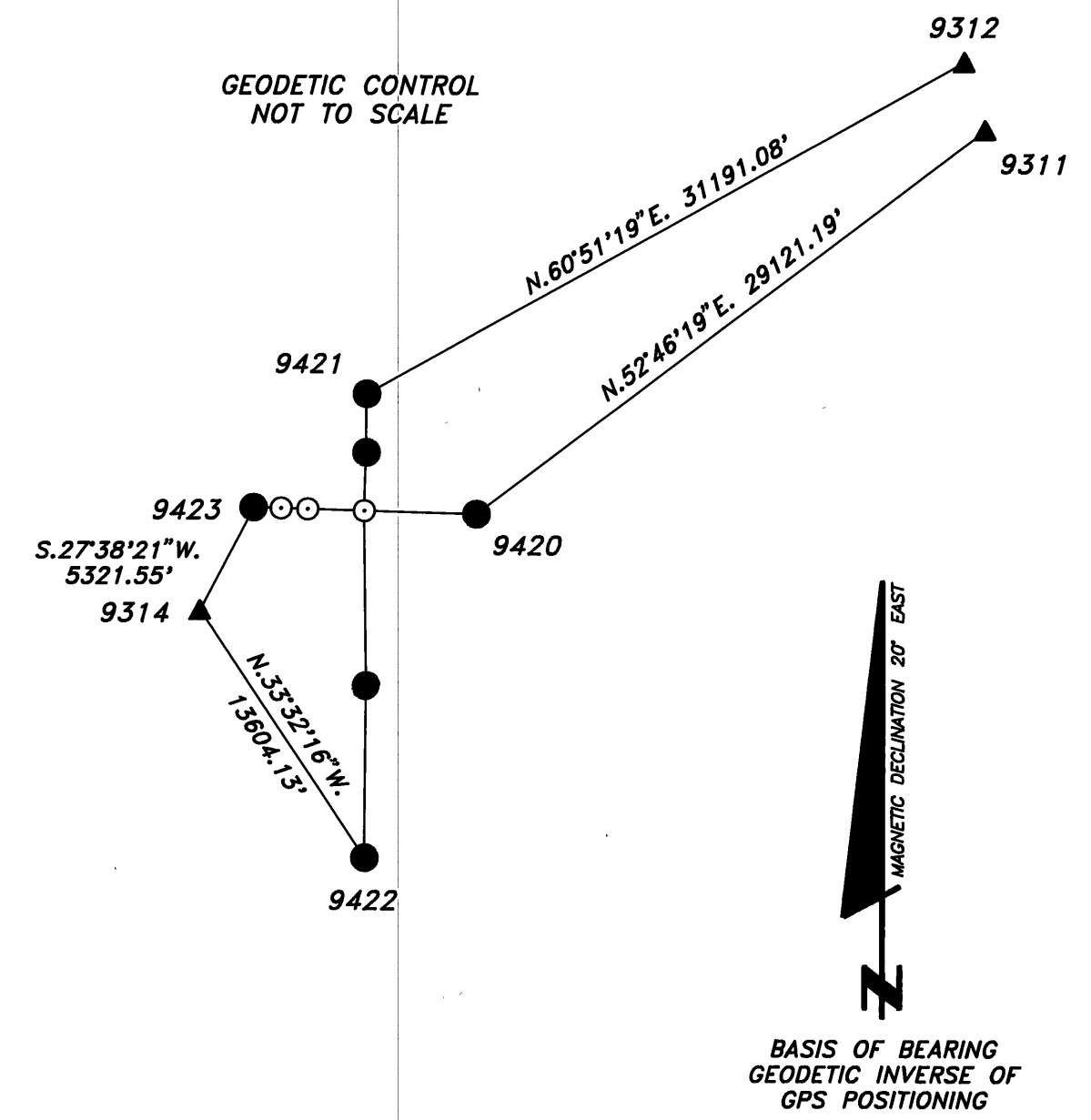
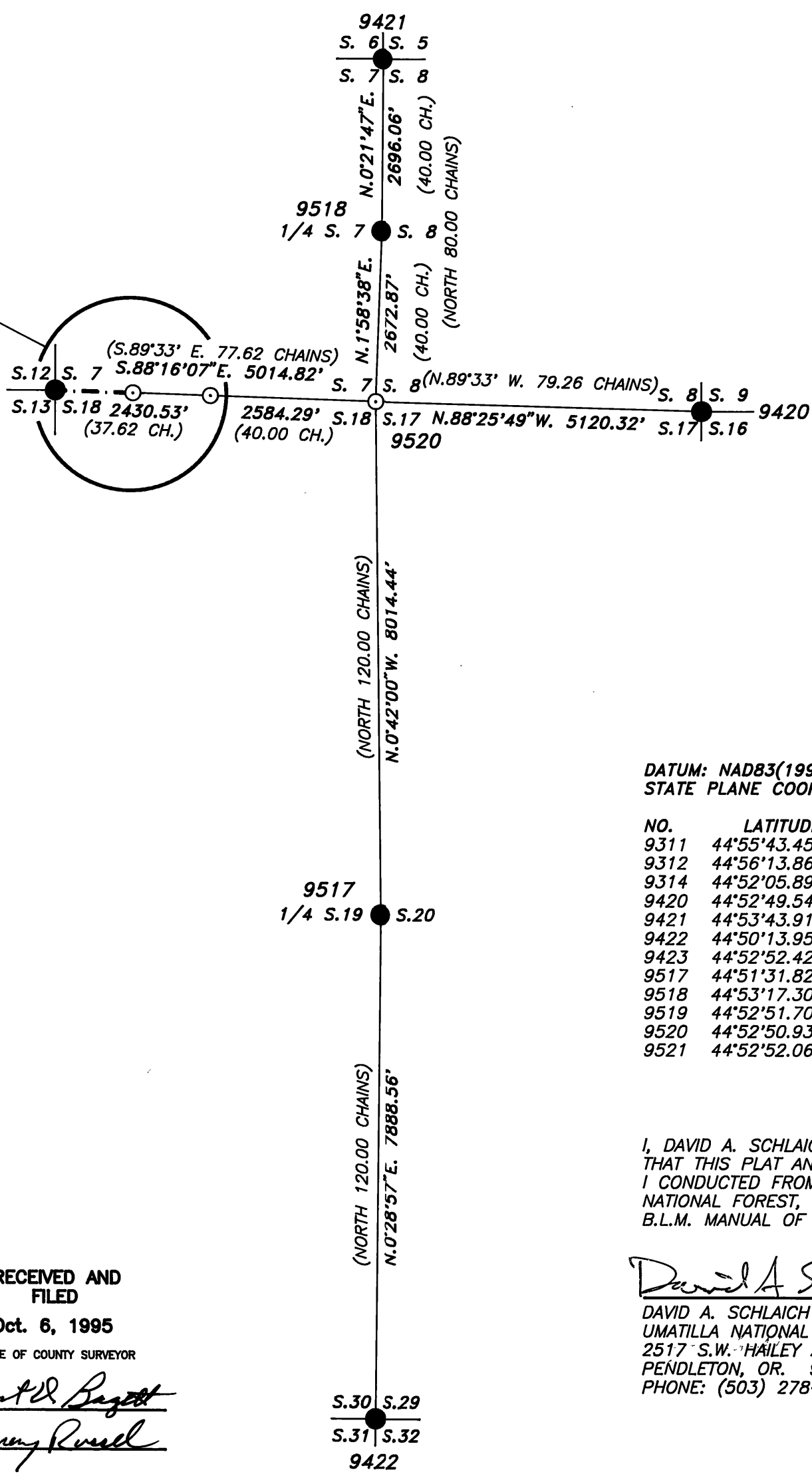
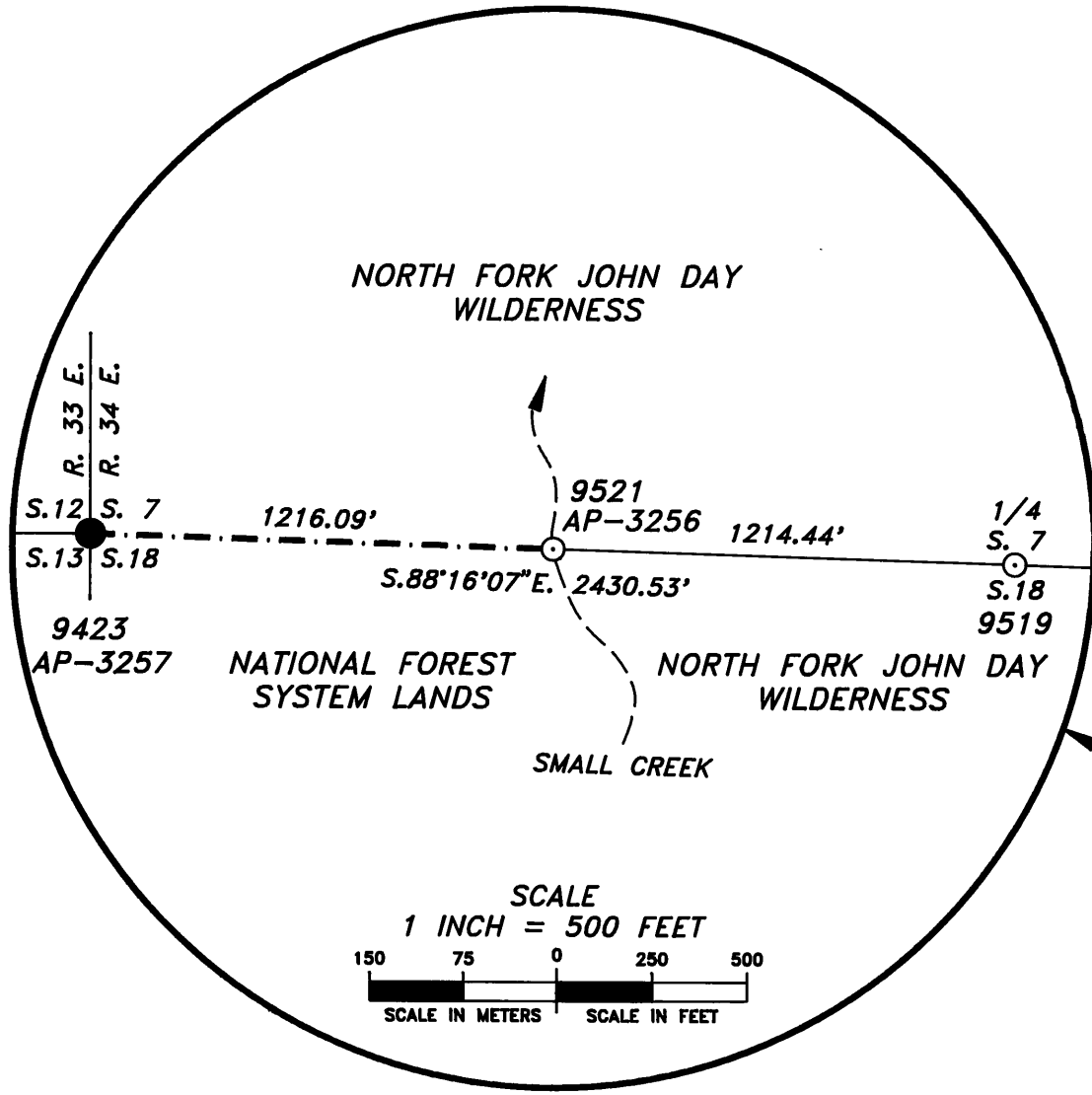


**SURVEY FOR
UMATILLA NATIONAL FOREST
OF
AP-3256 TO AP-3257
NORTH FORK JOHN DAY UNIT
NORTH FORK JOHN DAY WILDERNESS
LOCATED ON
THE SECTION LINE BETWEEN SECTIONS 7 & 18
T. 8 S., R. 34 E., W.M.
GRANT COUNTY, OREGON
JULY - AUGUST, 1995**



NOTE: BEARINGS SHOWN ARE MEAN GEODETIC AND DISTANCES SHOWN ARE GROUND DISTANCE BASED ON A MEAN PROJECT ELEVATION OF 5600 FEET.

DATUM: NAD83(1991)
STATE PLANE COORDINATES: OREGON NORTH ZONE (meters)

NO.	LATITUDE	LONGITUDE	NORTHING(Y)	EASTING(X)
9311	44°55'43.45733" N.	118°32'52.40125" W.	142104.552	2654078.535
9312	44°56'13.86254" N.	118°33'05.55102" W.	143035.824	2653767.653
9314	44°52'05.89115" N.	118°41'09.40008" W.	135136.763	2643334.622
9420	44°52'49.54692" N.	118°38'14.46923" W.	136571.265	2647142.296
9421	44°53'43.91321" N.	118°39'24.01581" W.	138213.920	2645578.188
9422	44°50'13.95723" N.	118°39'25.09627" W.	131734.483	2645702.314
9423	44°52'52.42714" N.	118°40'35.12821" W.	136589.730	2644054.280
9517	44°51'31.82486" N.	118°39'24.17426" W.	134137.808	2645667.726
9518	44°53'17.30037" N.	118°39'24.25301" W.	137392.571	2645591.726
9519	44°52'51.70230" N.	118°40'01.39770" W.	136584.112	2644794.816
9520	44°52'50.93159" N.	118°39'25.53348" W.	136578.232	2645582.201
9521	44°52'52.06447" N.	118°40'18.25149" W.	136586.908	2644424.800

REGISTERED
PROFESSIONAL
LAND SURVEYOR

David A. Schlaich

OREGON
JULY 16, 1987
DAVID A. SCHLAICH
2308
RENEWS 06/30/96

LEGEND

- MONUMENT FOUND
- ▲ GPS MONUMENT FOUND
- MONUMENT SET
- - - MARKED WILDERNESS BOUNDARY (0.23 MILES)
- () RECORD MEASUREMENT (G.L.O., 1884)

RECEIVED AND FILED
Oct. 6, 1995
OFFICE OF COUNTY SURVEYOR

Robert D. Baggett
ATTEST: *Jimmy Russell*

I, DAVID A. SCHLAICH, A REGISTERED LAND SURVEYOR IN THE STATE OF OREGON, HEREBY CERTIFY THAT THIS PLAT AND THE NOTES HEREON ARE A TRUE AND CORRECT REPRESENTATION OF A SURVEY I CONDUCTED FROM JULY 13 THROUGH AUGUST 31 OF 1995, AT THE REQUEST OF THE UMATILLA NATIONAL FOREST, IN ACCORDANCE WITH THE STATUTES OF THE STATE OF OREGON AND THE 1973 B.L.M. MANUAL OF SURVEYING INSTRUCTIONS.

David A. Schlaich
DAVID A. SCHLAICH -- RLS 2308
UMATILLA NATIONAL FOREST
2517 S.W. HAILEY AVENUE
PENDLETON, OR. 97801
PHONE: (503) 278-3747

REVIEWED BY:
Denise P. Jaylord Oct 3, 1995
SIGNATURE DATE

I CERTIFY THAT THIS SURVEY WAS PERFORMED AT THE REQUEST OF THE UMATILLA NATIONAL FOREST SUPERVISOR

John P. Kline 10/3/95
SIGNATURE DATE