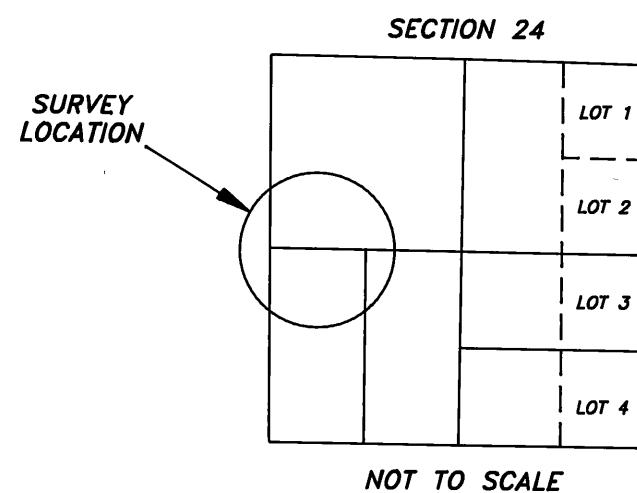


**SURVEY FOR
UMATILLA NATIONAL FOREST
OF
NORTH FORK JOHN DAY UNIT
NORTH FORK JOHN DAY WILDERNESS
AP-1860 TO AP-1861**

**LOCATED ON
THE EAST-WEST CENTERLINE OF SECTION 24,
T. 8 S., R. 35 E., WILLAMETTE MERIDIAN
GRANT COUNTY, OREGON
JULY 20, 1995**

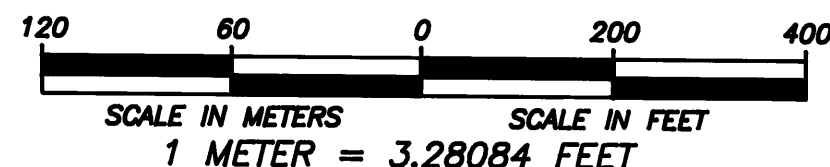


NOT TO SCALE

LEGEND

- MONUMENT FOUND
- MONUMENT SET
- MARKED WILDERNESS BOUNDARY
- () RECORD MEASUREMENT (GRIFFITH, 1987)

SCALE: 1 INCH = 200 FEET



DATUM: NAD83(1991)
STATE PLANE COORDINATES: OREGON NORTH ZONE (METERS)

NO.	LATITUDE	LONGITUDE	NORTHING(Y)	EASTING(X)
1861	44°51'27.44959" N.	118°27'09.33391" W.	134391.214	2661798.869
9309	44°57'56.77037" N.	118°27'21.40698" W.	146397.634	2661229.898
9310	44°56'51.16375" N.	118°26'27.17732" W.	144403.407	2662469.443
9514	44°51'27.52341" N.	118°27'18.12946" W.	134388.601	2661605.775
9515	44°51'27.37076" N.	118°26'59.89528" W.	134394.035	2662006.081

I, DAVID A. SCHLAICH, A REGISTERED LAND SURVEYOR IN THE STATE OF OREGON, HEREBY CERTIFY THAT THIS PLAT AND THE NOTES HEREON ARE A TRUE AND CORRECT REPRESENTATION OF A SURVEY I CONDUCTED FROM JUNE 21 THROUGH JULY 20 OF 1995, AT THE REQUEST OF THE UMATILLA NATIONAL FOREST, IN ACCORDANCE WITH THE STATUTES OF THE STATE OF OREGON AND THE B.L.M. MANUAL OF SURVEYING INSTRUCTIONS.

David A. Schlaich
DAVID A. SCHLAICH -- RLS 2308
UMATILLA NATIONAL FOREST
2517 S.W. HAILEY AVENUE
PENDLETON, OR. 97801
PHONE: (503) 278-3747

REVIEWED BY:
Dennis R. Layford August 21, 1995
SIGNATURE DATE
I CERTIFY THAT THIS SURVEY WAS PERFORMED AT THE REQUEST OF THE UMATILLA NATIONAL FOREST SUPERVISOR
John P. Kline 8/21/95
SIGNATURE DATE

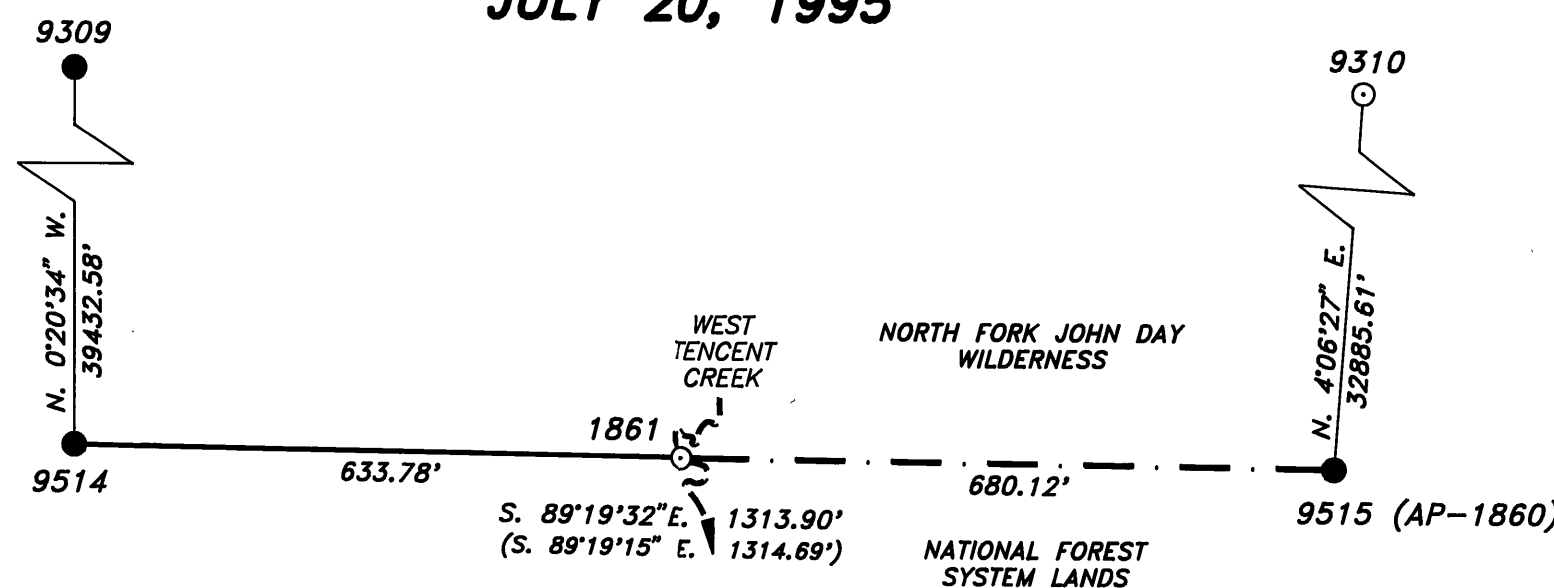
RECEIVED AND FILED

Sept. 1, 1995
OFFICE OF COUNTY SURVEYOR

Robert D. Baggett
ATTEST: *James Russell*

REGISTERED
PROFESSIONAL
LAND SURVEYOR
David A. Schlaich
OREGON
JULY 16, 1987
DAVID A. SCHLAICH
2308

RENEWS 06/30/96



NARRATIVE:

PURPOSE:
THE PURPOSE OF THIS SURVEY WAS TO MARK AND MONUMENT THE BOUNDARY OF THE NORTH FORK JOHN DAY UNIT OF THE NORTH FORK JOHN DAY WILDERNESS FROM AP-1860 (CW1/16 OF SECTION 24) TO AP-1861.

HISTORY:
1884, HERMAN D. GRADON, U.S. DEPUTY SURVEYOR, SUBDIVIDED THE TOWNSHIP UNDER CONTRACT NUMBER 499.

1987, DUANE I. GRIFFITH, REGISTERED LAND SURVEYOR NO. 644, SUBDIVIDED THE SECTION AND MARKED BOUNDARIES BETWEEN PRIVATE AND NATIONAL FOREST SYSTEM LANDS (GRANT COUNTY MAP SURVEY NO. 1019).

1993, DAVID A. SCHLAICH, REGISTERED LAND SURVEYOR NO. 2308, PERFORMED A GPS CONTROL SURVEY AND ESTABLISHED GEODETIC POSITIONS ON THE CORNER OF SECTIONS 11, 12, 13 & 14, T. 7 S., R. 35 E. (9309) AND ON THE NE1/16 CORNER OF SECTION 24, T. 7 S., R. 35 E. (9310) (GRANT COUNTY MAP SURVEY NO. 1310).

PROCEDURES:
THE DESCRIPTION UTILIZED TO LOCATE THE BOUNDARY WAS OBTAINED FROM THE PERMANENT OPEN 2320 FILES LOCATED IN THE SUPERVISOR'S OFFICE OF THE UMATILLA NATIONAL FOREST LOCATED AT PENDLETON, OREGON.

AP-1861 WAS ESTABLISHED AT A POINT IN WEST TENCENT CREEK ON THE EAST-WEST CENTERLINE OF SECTION 24, T. 8 S., R. 35 E.

THE SURVEY WAS CONDUCTED IN TWO PHASES. A GPS PHASE WHICH PROVIDED GEODETIC CONTROL FOR THE PROJECT AND A CONVENTIONAL SURVEY PHASE WHICH MONUMENTED AND MARKED THE BOUNDARY.

THE GPS PHASE OF THE SURVEY WAS CONDUCTED USING FEDERAL GEODETIC CONTROL COMMITTEE (FGCC) ORDER C 2-II SPECIFICATIONS AS A GUIDE. ALL COORDINATES PROVIDED ARE NAD83(1991) (OREGON HIGH PRECISION GEODETIC NETWORK).

THE EQUIPMENT USED WAS THREE TRIMBLE 4000SSE, DUAL FREQUENCY, RECEIVERS WITH EXTERNAL GEODETIC ANTENNAS, NIKON TRIBACHS, AND STANDARD SURVEY TRIPODS. ANTENNA HEIGHTS WERE MEASURED USING WILD'S HEIGHT HOOK SYSTEM.

FAST STATIC, CARRIER PHASE MEASUREMENTS AND DATA PROCESSING WAS USED ON ALL BASELINE MEASUREMENTS. THE BASELINES WERE THEN ADJUSTED USING A LEAST SQUARES ADJUSTMENT WITH POINTS 9309 AND 9310 BEING USED AS FIXED HORIZONTAL CONTROL. THE ADJUSTED GPS MEASUREMENTS WERE USED AS THE BASIS OF BEARING FOR THIS SURVEY.

THE CONVENTIONAL PHASE OF THE SURVEY WAS CONDUCTED USING A TOPCON GTS-4 TOTAL STATION IN CONJUNCTION WITH BUREAU OF LAND MANAGEMENT'S CMM (CADASTRAL SURVEY MEASUREMENT MANAGEMENT SYSTEM) PC COMPUTER PROGRAM USING A MEAN PROJECT ELEVATION OF 5200 FEET.

THE BEARING TREES WERE TIED USING THE TOPCON GTS-4 WITH DISTANCE MEASUREMENTS TAKEN AT THE SIDE CENTER OF THE TREE ONE FOOT ABOVE THE ROOT CROWN. DIAMETERS WERE MEASURED AT BREAST HEIGHT. ALL NEW BEARING TREES ARE DOUBLE BLAZED AND HAVE A 3/4" DIAMETER BRASS WASHER STAMPED "RLS 2308" NAILED TO LOWER BLAZE BETWEEN THE "BT" SCRIBING.

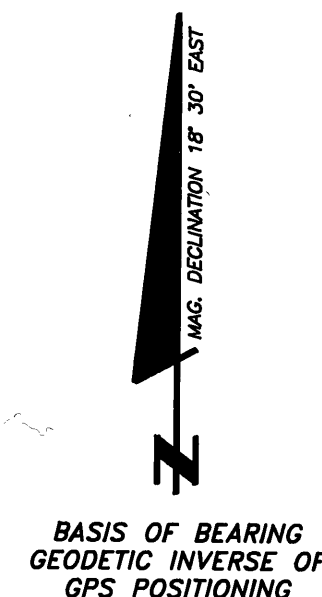
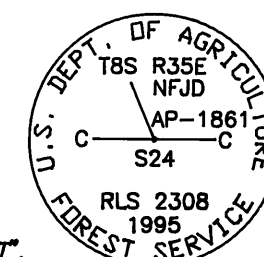
THE WILDERNESS BOUNDARY WAS MARKED BY ATTACHING METAL WILDERNESS BOUNDARY SIGNS TO METAL FENCE POSTS SET WITHIN ONE FOOT OF THE BOUNDARY.

THE FIELD BOOK IS ON FILE AT THE SUPERVISOR'S OFFICE OF THE UMATILLA NATIONAL FOREST.

1861
AP-1861 ON THE E-W CENTERLINE OF SECTION 24, T. 8 S., R. 35 E.

SET IN THE CENTER OF WEST TENCENT CREEK, ON THE EAST-WEST CENTERLINE OF SECTION 24, T. 8 S., R. 35 E., A 5/8" BY 36" LONG REBAR, WITH 3 1/4" ALUMINUM CAP, 33" IN THE GROUND, MARKED AS SHOWN, FROM WHICH:

22" WESTERN LARCH, S. 34 1/4" W., 16.2 FEET, SCRIBED "WB/1861" "BT".
18" ENGLEMANN SPRUCE, N. 79 1/4" W., 6.9 FEET, SCRIBED "WB/1861" "BT".



9309
CORNER OF SECTIONS 11, 12, 13 AND 14, T. 7 S., R. 35 E.

FOUND A 2 1/2" ALUMINUM PIPE, WITH 2 1/2" ALUMINUM CAP, PROJECTING 1" OUT OF THE GROUND SURROUNDED BY A RING OF STONE 2" IN DIAMETER, MARKED AS SHOWN, FROM WHICH:

13" LODGEPOLE PINE, N. 53 1/2" E., 124.6 FEET, SCRIBED "T7S R35E S12 BT" ON SINGLE BLAZE.
13" DOWNED LODGEPOLE PINE, S. 88" E., 132. FEET, SCRIBING VISIBLE ON CHOPPED OPEN FACE.
18" LODGEPOLE PINE, N. 80 1/2" W., 83.3 FEET, SCRIBED "T7S R35E S11 BT" ON SINGLE BLAZE.
10" LODGEPOLE PINE SNAG, N. 31 3/4" W., 12.9 FEET SCRIBED "T7S R35E S11 BT" ON PARTIALLY HEALED BLAZE.
1 1/2" ALUMINUM CAP SET FLUSH WITH THE GROUND, S. 20°22' E., 12.04 FEET, MARKED "S13 12.00 FT 1106".
5/8" REBAR, WITH 1 1/2" ALUMINUM CAP, PROJECTING 1" OUT OF THE GROUND, S. 42°45' W., 12.04 FEET, MARKED "S14 12.00 FT 1106".

9310
NE 1/16 CORNER OF SECTION 24, T. 7 S., R. 35 E.

FOUND REFERENCE MONUMENTS (CORNER MONUMENT IS MISSING) SET BY WELLS. AT RECORD BEARING AND DISTANCE FROM THE REFERENCES SET A 2 1/2" BY 30" ALUMINUM PIPE, WITH 3 1/4" ALUMINUM CAP, 29" IN THE GROUND, MARKED AS SHOWN, FROM WHICH:

5/8" REBAR, WITH 1 1/2" ALUMINUM CAP, PROJECTING 2" OUT OF THE GROUND, N. 42° E., 12.0 FEET, MARKED "S24 12.00 FT 1106".
5/8" REBAR PROJECTING 4" OUT OF THE GROUND, N. 42 1/2° W., 12.0 FEET.

9514
1/4 CORNER OF SECTIONS 23 & 24, T. 8 S., R. 35 E.

FOUND A 2 1/2" ALUMINUM PIPE, WITH 2 1/2" ALUMINUM CAP, PROJECTING 1" OUT OF THE GROUND SURROUNDED BY A RING OF STONE, MARKED AS SHOWN, FROM WHICH:

29" WESTERN LARCH, N. 27 1/4" E., 54.8 FEET, SCRIBED "1/4 S24""BT" ON DOUBLE BLAZE WITH 3/4" BRASS WASHER MARKED "OPLS 644" NAILED NEAR THE "BT" SCRIBING ON THE LOWER BLAZE.
22" DEAD WESTERN LARCH, N. 33° W., 36.7 FEET, SCRIBED "1/4 S23""BT" ON DOUBLE BLAZE WITH 3/4" BRASS WASHER MARKED "OPLS 644" NAILED NEAR THE "BT" SCRIBING ON THE LOWER BLAZE.

MARKED NEW BT'S:

7" LODGEPOLE PINE, S. 88 1/2° E., 5.4 FEET, MARKED "1/4 S24" "BT".
7" GRAND FIR, S. 69 1/4° W., 7.4 FEET, MARKED "1/4 S23" "BT".
8" LODGEPOLE PINE, N. 33 1/4° W., 8.1 FEET, MARKED "1/4 S23" "BT".

9515
CW1/16 CORNER OF SECTION 24, T. 8 S., R. 35 E.

FOUND A 2 1/2" ALUMINUM PIPE, WITH 2 1/2" ALUMINUM CAP, SET FLUSH WITH THE GROUND SURROUNDED BY A RING OF STONE 2" IN DIAMETER, MARKED AS SHOWN, FROM WHICH:

14" ENGLEMANN SPRUCE, N. 12 1/2° E., 14.4 FEET, SCRIBING "W1/16 S24" "BT" ON PARTIALLY HEALED DOUBLE BLAZE.
7" WESTERN LARCH, S. 9 1/4° E., 53.2 FEET, SCRIBING "X" "BT" ON PARTIALLY HEALED DOUBLE BLAZE.
BOTH BT'S HAVE A 3/4" BRASS WASHER MARKED "OPLS 644" NAILED NEAR THE "BT" SCRIBING ON THE LOWER BLAZE.

