

A PORTION OF "LAKE CADASTRAL"
T.16S., R.33-1/2E., W.M.
SECTIONS 26, 35 & 36
GRANT COUNTY, OREGON

Survey by: Susan E. Newstetter, P.L.S. 2405
D. Mitchell Ferguson, Surv. Tech.
Rick Saul, Surv. Tech.
Reviewed by: Douglas M. Ferguson, P.L.S. 848
Drawn by: Kenneth H. Delano Jr., L.S.T. 1273
M. Chris Maynard
For: U.S.D.A. Forest Service
Malheur National Forest

HISTORY

1883 - Henry W. Cooke, U.S. Deputy Surveyor, conducted the original survey of the south township line of T.16S., R.33-1/2E., W.M., under GLO Contract No. 488, dated August 11, 1883 and approved January 28, 1884.
1884 - Henry W. Cooke, U.S. Deputy Surveyor, conducted the original subdivision of T.16S., R.33-1/2E., W.M., under GLO Contract No. 494, dated January 16, 1884 and approved August 2, 1884.
1969 - Douglas M. Ferguson, PLS 848, remonumented certain 1/4 and section corners in this township.
1982 - Douglas M. Ferguson, PLS 848, conducted a dependent resurvey of Sections 24, 25 and 36, T.16S., R.33-1/2E., W.M. while under contract with the Malheur National Forest. See Grant County Map of Survey No. 751.
1985 - Tyler B. Parsons, PLS 1918, conducted a dependent resurvey of Sections 24, 25 and 36, T.16S., R.33-1/2E., W.M. while under contract with the Malheur National Forest. See Grant County Map of Survey No. 885.

NARRATIVE

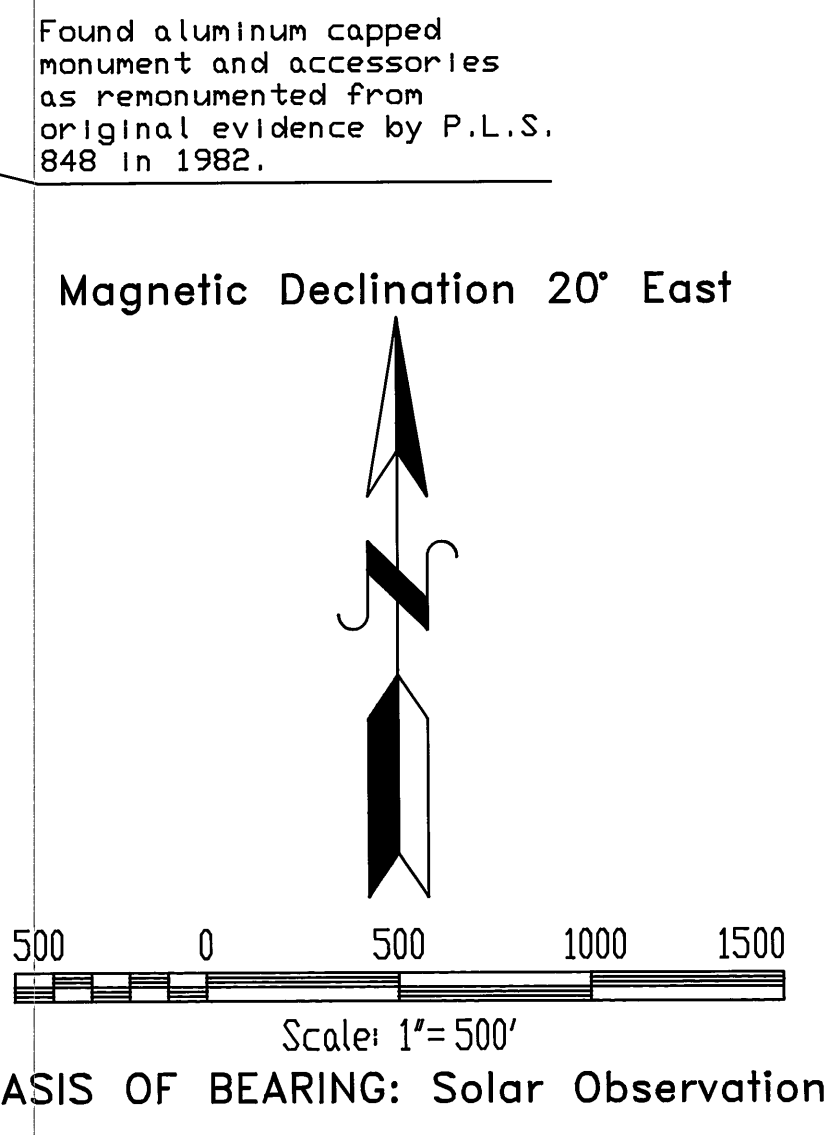
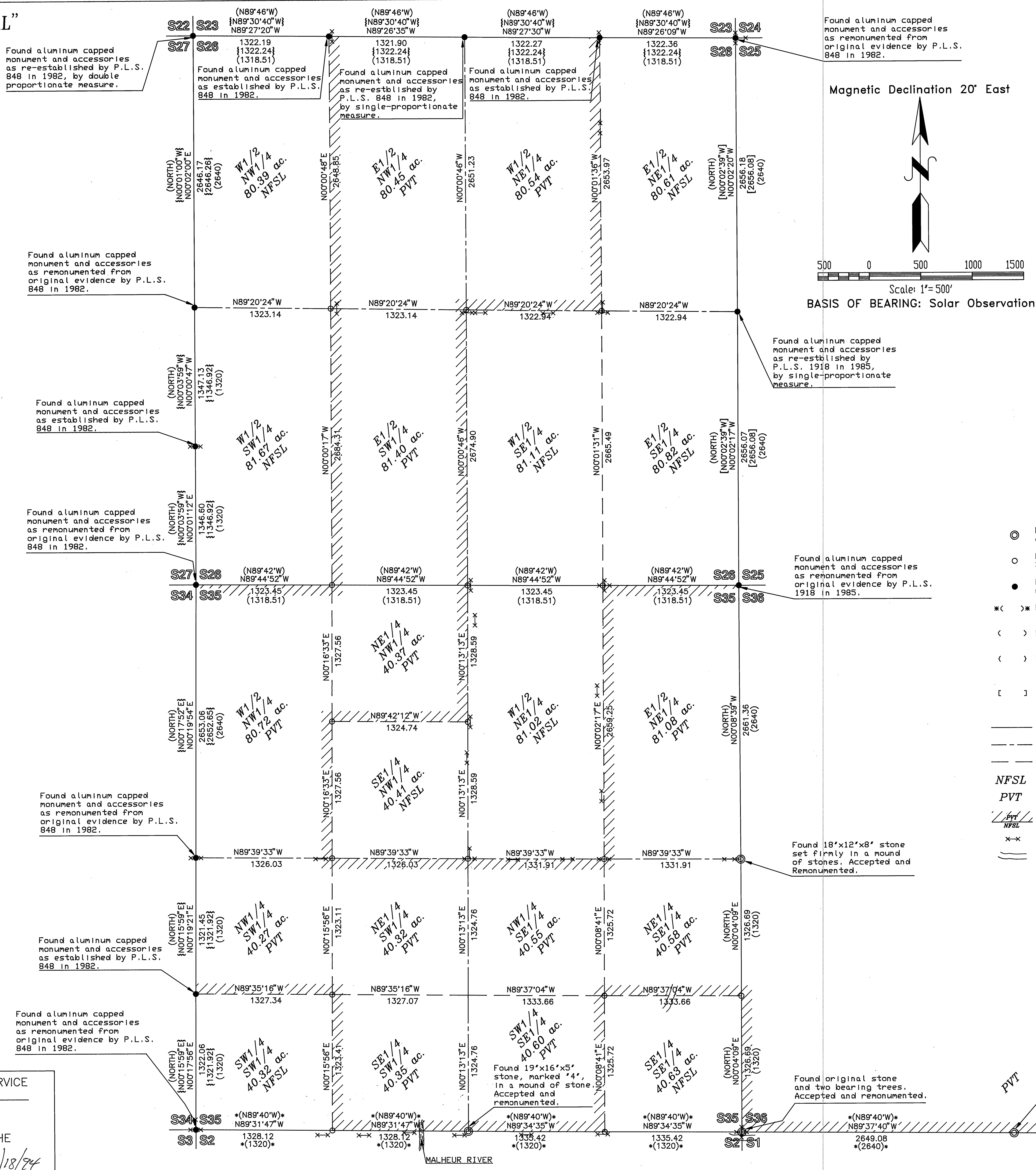
This survey was performed under contract for the Malheur National Forest for the purpose of marking and posting the Forest boundary in Sections 26, 35 and 36, T.16S., R.33-1/2E., W.M.
In order to perform this survey the traverse was run through all of the controlling corners. The majority of the controlling corners had been previously remonumented with the exception of 1/4 section corners: 26, 35/36, 35, and 36 and section corner for 35/36 2/1.
I recovered original evidence at all of the above corners with the exception of 1/4 26 which was originally monumented with a post and pits. The area had been farmed and I believe the monument was lost to this farming so I subsequently re-established its position by single proportionate measurement from the section corners, previously remonumented, 1/2 mile east and west.
The "Certified Record of Land Corner Monumentation" forms as referenced to this Map of Survey and the notes shown on the Map should be considered a substantial part of this Narrative as they contain detailed information as to the evaluation of evidence and monumentation work performed.
Positional control for this survey is provided by a closed traverse network. A Wild TC1600 total station was used to obtain measurements and field set monuments from the survey control. A Zeos Notebook computer (IBM compatible 386) utilizing Wildsoft software was used to perform the computations and the Map was prepared utilizing AutoCad v.12. The basis of bearing was determined by solar observation to determine a true meridian through the center of the project. Field notes and computations are on file in the office of Ferguson Surveying and Engineering, Mt. Vernon, Oregon 97865.
I, Susan E. Newstetter, Registered Professional Land Surveyor, in the State of Oregon, hereby certify that this Map, notes and records hereon or reference, are a correct representation of the survey I performed during the months of May 1993 - October 1993 for the U.S. Forest Service in accordance with the Statutes of the State of Oregon and the articles of my Contract Number 53-04KK-2-02803.

Susan E. Newstetter
SUSAN E. NEWSTETTER, PLS 2405
Staff Surveyor
Ferguson Surveying and Engineering

GRANT COUNTY MAP OF SURVEY NO. 1311

EXAMINED AND ACCEPTED FOR THE U.S. FOREST SERVICE
THIS 16th DAY OF March 1994
SIGNATURE *DE Delano*
C.O.R.

I CERTIFY THAT THIS SURVEY WAS PERFORMED AT THE
REQUEST OF THE Malheur National Forest
SIGNATURE *M. Chris Maynard* DATE 3/18/94
FOREST SUPERVISOR



Ferguson Surveying
Engineering
MT. VERNON, OREGON
PHONE (503)932-4520
FAX (503)932-4430

- LEGEND
- ⊙ Monumented from original evidence. Set 2-1/2" x 30" aluminum pipe with 3-1/4" aluminum cap.
 - Monumented by survey. Set 2-1/2" x 30" aluminum pipe with 3-1/4" aluminum cap.
 - Found monument of record, as described in the "History" and notes at each corner.
 - * () Record bearing and distance as returned by Henry W. Cooke in 1883 under GLO Contract No. 488.
 - < > Record bearing and distance as returned by Henry W. Cooke in 1884 under GLO Contract No. 494.
 - [] Record bearing and distance as returned by Douglas M. Ferguson, PLS 848, in 1982 while under contract with the Malheur National Forest.
 - [] Record bearing and distance as returned by Tyler B. Parsons, PLS 1918, in 1985 while under contract with the Malheur National Forest.
 - Exterior Section Lines
 - - - Center Section Lines
 - Subdivisional Lines
 - NFSL National Forest System Lands
 - PVT Private Lands
 - Marked Forest boundary with steel fence posts and Forest boundary signs at maximum intervals of 250 feet.
 - x-x Existing fence with long line showing direction
 - Existing roadway

REGISTERED
PROFESSIONAL
LAND SURVEYOR
Susan E. Newstetter
OREGON
JULY 24/1989
SUSAN E. NEWSTETTER
2405
RENEWAL DATE:
12/31/94

RECEIVED AND
FILED
MAR 28 1994
OFFICE OF COUNTY SURVEYOR
Grant County, Oregon

Found 16"x10"x10" stone,
clearly marked 1/4, set
firmly in the ground.
Accepted and remonumented.

Found original stone
and two bearing trees.
Accepted and remonumented.

Found 19"x16"x5" stone,
marked "4",
in a mound of stone.
Accepted and remonumented.

Found aluminum capped
monument and accessories
as remonumented from
original evidence by P.L.S.
848 in 1982.

Found aluminum capped
monument and accessories
as established by P.L.S.
848 in 1982.

Found aluminum capped
monument and accessories
as remonumented from
original evidence by P.L.S.
848 in 1982.

Found aluminum capped
monument and accessories
as remonumented from
original evidence by P.L.S.
1918 in 1985.

Found aluminum capped
monument and accessories
as remonumented from
original evidence by P.L.S.
848 in 1982.

Found aluminum capped
monument and accessories
as established by P.L.S.
848 in 1982.

Found aluminum capped
monument and accessories
as remonumented from
original evidence by P.L.S.
848 in 1982.

Found aluminum capped
monument and accessories
as re-established by P.L.S.
848 in 1982, by double
proportionate measure.

Found aluminum capped
monument and accessories
as established by P.L.S.
848 in 1982,
by single-proportionate
measure.

Found aluminum capped
monument and accessories
as re-established by P.L.S.
848 in 1982.

Found aluminum capped
monument and accessories
as remonumented from
original evidence by P.L.S.
848 in 1982.