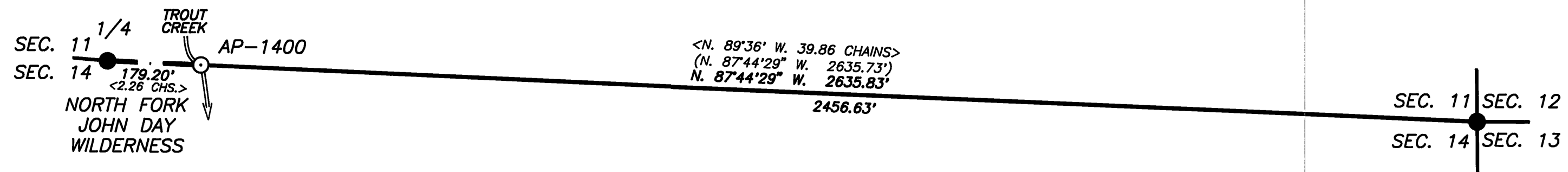
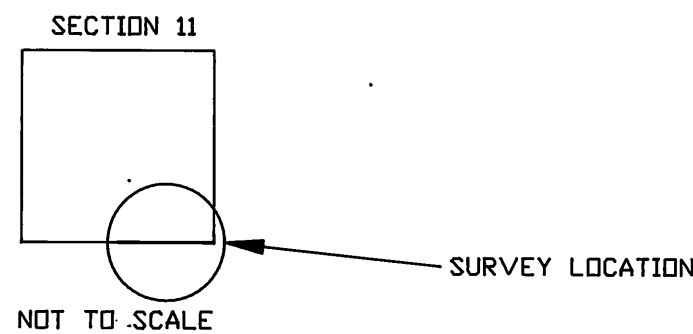


**SURVEY FOR
UMATILLA NATIONAL FOREST
OF
ANGLE POINT 1400
NORTH FORK JOHN DAY WILDERNESS
LOCATED ON
THE SECTION LINE BETWEEN SECTIONS 11 & 14,
TOWNSHIP 7 SOUTH, RANGE 35 EAST,
WILLAMETTE MERIDIAN
GRANT COUNTY, OREGON
OCTOBER 1993**

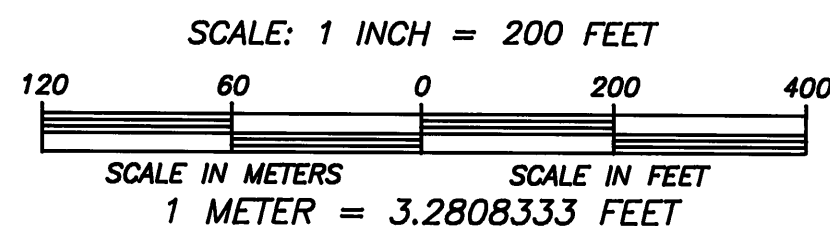


BASIS OF BEARING
GRANT COUNTY MAP
SURVEY NO. 836



LEGEND

- MONUMENT FOUND
- MONUMENT SET
- MARKED WILDERNESS BOUNDARY
- < > RECORD MEASUREMENT <G.L.O., 1884>
- () RECORD MEASUREMENT (WELLS, 1983)



NARRATIVE:

PURPOSE:

THE PURPOSE OF THIS SURVEY WAS TO MONUMENT ANGLE POINT 1400 OF THE NORTH FORK JOHN DAY UNIT OF THE NORTH FORK JOHN DAY WILDERNESS.

HISTORY:

1884, HERMAN D. GRADON, U.S. DEPUTY SURVEYOR, SUBDIVIDED THE TOWNSHIP UNDER CONTRACT NO. 499.

1983, WILLIAM R. WELLS, REGISTERED LAND SURVEYOR NO. 1106, SUBDIVIDED SECTIONS 11 AND 14 FOR THE UMATILLA NATIONAL FOREST (GRANT COUNTY MAP SURVEY NO. 836).

PROCEDURES:

THE DESCRIPTION UTILIZED TO LOCATE ANGLE POINT 1400 WAS OBTAINED FROM THE PERMANENT OPEN 2320 FILES LOCATED IN THE SUPERVISOR'S OFFICE OF THE UMATILLA NATIONAL FOREST LOCATED AT PENDLETON, OREGON.

ANGLE POINT 1400 WAS ESTABLISHED AT A POINT IN TROUT CREEK ON THE SECTION LINE BETWEEN SECTIONS 11 AND 14.

THE SURVEY WAS CONDUCTED USING A TOPCON GTS-4 TOTAL STATION. ALL BEARING TREES WERE TIED USING THE TOPCON GTS-4, WITH DISTANCE MEASUREMENTS TAKEN AT THE SIDE CENTER OF THE BEARING TREES ONE FOOT ABOVE THE ROOT CROWN. DIAMETERS WERE MEASURED AT BREST HEIGHT.

ALL NEW BEARING TREES ARE DOUBLE BLAZED AND HAVE A 3/4 INCH DIAMETER BRASS WASHER STAMPED "RLS 2308" NAILED NEXT TO THE "BT" SCRIBING ON THE LOWER BLAZE.

THE WILDERNESS BOUNDARY WAS MARKED BY ATTACHING METAL WILDERNESS BOUNDARY SIGN TO METAL FENCE POSTS SET WITHIN ONE FOOT OF THE SECTION LINE BETWEEN SECTIONS 11 AND 14, FROM THE 1/4 CORNER OF SECTIONS 11 AND 14 TO TROUT CREEK.

FIELD BOOK ONE IS ON FILE AT THE SUPERVISOR'S OFFICE OF THE UMATILLA NATIONAL FOREST.

1/4 CORNER OF SECTIONS 11 AND 14

FOUND A 2 1/2" ALUMINUM PIPE, WITH A 2 1/2" ALUMINUM CAP, PROJECTING 4" OUT OF THE GROUND SET IN A RING OF ROCKS 2' IN DIAMETER, MARKED AS SHOWN, FROM WHICH:

16" LODGEPOLE PINE SNAG, 6' HIGH, BEARS, N. 83 3/4° W., 183.5 FEET, SCRIBING "45B" VISIBLE ON CHOPPED OPENED FACE (ORIGINAL BT, RECORD N. 82° W.).

A 5/8" REBAR, WITH 1 1/2" ALUMINUM CAP, PROJECTING 2 1/2" OUT OF THE GROUND, MARKED AS SHOWN, BEARS S. 55°26' W., 12.03 FEET (RECORD S. 59 1/2° W., 12.00').

A 5/8" REBAR, WITH 1 1/2" ALUMINUM CAP, PROJECTING 1 1/2" OUT OF THE GROUND, MARKED AS SHOWN, BEARS, N. 25°02' W., 11.94 FEET (RECORD N. 23 1/2° W., 12.00').

NEW REFERENCES:

6" LODGEPOLE PINE BEARS, S. 17° W., 106.6 FEET, SCRIBED "1/4 S14" BT.

A 5/8" X 24" REBAR, WITH 1 1/2" ALUMINUM CAP, SET 22" IN THE GROUND, MARKED AS SHOWN, BEARS S. 88°09' E., 52.43 FEET.

AP-1400

SET IN THE CENTER OF TROUT CREEK A 5/8" X 24" REBAR, WITH A 3 1/4" ALUMINUM CAP, 19" INTO THE CREEK BOTTOM, MARKED AS SHOWN, FROM WHICH:
A 5/8" X 24" REBAR, WITH 1 1/2" ALUMINUM CAP, SET 22" IN THE GROUND, MARKED AS SHOWN, BEARS, N. 87°09' W., 67.20 FEET.
A 5/8" X 24" REBAR, WITH 1 1/2" ALUMINUM CAP, SET 21" IN THE GROUND, MARKED AS SHOWN, BEARS, S. 35°09' E., 30.02 FEET.

CORNER OF SECTIONS 11, 12, 13 & 14

FOUND A 2 1/2" ALUMINUM PIPE, WITH A 2 1/2" ALUMINUM CAP, PROJECTING 1" OUT OF A RING OF ROCKS, FROM WHICH:
13" LODGEPOLE PINE BEARS, N. 53 1/2° E., 124.6 FEET, SCRIBING "T7S R35E S12 BT" VISIBLE ON SINGLE BLAZE (RECORD N. 55° E.).
13" DOWNED LODGEPOLE PINE SNAG BEARS, S. 88° E., 13.2 FEET, WITH CHOPPED OPEN BLAZE TO VISIBLE SCRIBING (ORIGINAL BT).
18" LODGEPOLE PINE BEARS, N. 80 1/2° W., 83.3 FEET, SCRIBING "T7S R35E S11 BT" VISIBLE ON SINGLE BLAZE (RECORD 83.7 FEET).
10" LODGEPOLE PINE SNAG BEARS, N. 31 3/4° W., 12.9 FEET (12.5 FT TO FACE), SCRIBING "T7S R35E S11 BT" VISIBLE ON PARTIALLY HEALED BLAZE (ORIGINAL BT; RECORD N. 30° W.).
A 5/8" REBAR, WITH 1 1/2" ALUMINUM CAP, SET FLUSH WITH GROUND, MARKED AS SHOWN, BEARS S. 20°23' E., 12.04 FEET. (RECORD S. 17 1/2° E., 12.00').
A 5/8" REBAR, WITH 1 1/2" ALUMINUM CAP, PROJECTING 1" OUT OF THE GROUND, MARKED AS SHOWN, BEARS, S. 42°45' W., 12.04 FEET (RECORD S. 46° W., 12.00').

I, DAVID A. SCHLAICH, A REGISTERED LAND SURVEYOR IN THE STATE OF OREGON, HEREBY CERTIFY THAT THIS PLAT AND THE NOTES HEREON ARE A TRUE AND CORRECT REPRESENTATION OF A SURVEY I CONDUCTED IN OCTOBER OF 1993, AT THE REQUEST OF THE UMATILLA NATIONAL FOREST, IN ACCORDANCE WITH THE STATUTES OF OREGON AND THE 1973 B.L.M. MANUAL OF SURVEYING INSTRUCTIONS.

David A. Schlaich
DAVID A. SCHLAICH -- RLS 2308
UMATILLA NATIONAL FOREST
2517 S.W. HAILEY AVENUE
PENDLETON, OREGON 97801
PHONE (503) 278-3747

