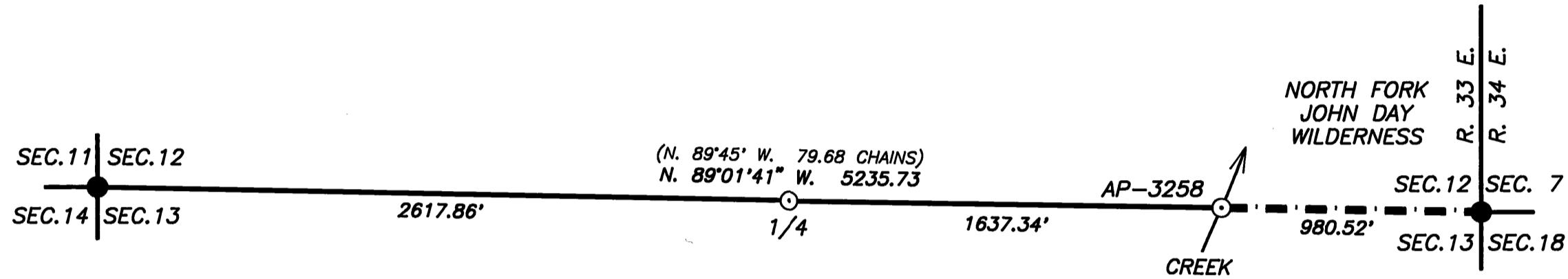
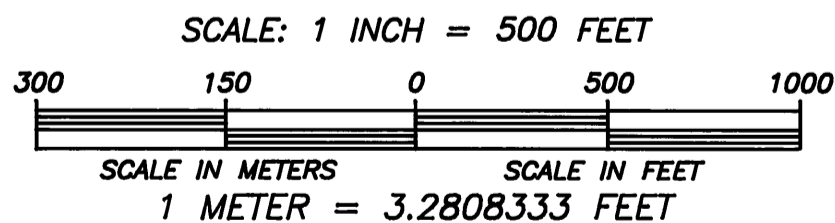


**SURVEY FOR
UMATILLA NATIONAL FOREST
OF
ANGLE POINT 3258
NORTH FORK JOHN DAY WILDERNESS
LOCATED ON
THE SECTION LINE BETWEEN SECTIONS 12 & 13,
TOWNSHIP 8 SOUTH, RANGE 33 EAST,
WILLAMETTE MERIDIAN
GRANT COUNTY, OREGON
JUNE - SEPTEMBER 1993**



LEGEND

- MONUMENT FOUND
- MONUMENT SET
- MARKED WILDERNESS BOUNDARY
- () RECORD MEASUREMENT (G.L.O., 1884)



NARRATIVE:

PURPOSE:
THE PURPOSE OF THIS SURVEY WAS TO MONUMENT AND MARK THE WILDERNESS BOUNDARY OF THE NORTH JOHN DAY UNIT OF THE NORTH FORK JOHN DAY WILDERNESS FROM THE CORNER OF SECTIONS 12 AND 13, T. 8 S., R. 33 E., & SECTIONS 7 AND 18, T. 8 S., R. 34 E., TO A.P.-3258, WHICH IS ON THE SECTION LINE BETWEEN SECTIONS 12 AND 13.

HISTORY:
1883, FRANK W. CAMPBELL, U.S. DEPUTY SURVEYOR SURVEYED THE RANGE LINE BETWEEN TOWNSHIP 8 SOUTH, RANGES 33 & 34 EAST UNDER CONTRACT NO. 468.

1884, HERMAN D. GRADON, U.S. DEPUTY SURVEYOR, SUBDIVIDED T. 8 S., R. 33 E., UNDER CONTRACT NO. 499.

1992, DAVID A. SCHLAICH, RLS 2308, REMONUMENTED THE CORNER OF SECTIONS 7, 12, 13 AND 18, AND THE CORNER OF SECTIONS 11, 12, 13 & 14 FROM ORIGINAL EVIDENCE.

PROCEDURES:
THE DESCRIPTION UTILIZED TO LOCATE ANGLE POINT 3258 WAS OBTAINED FROM THE PERMANENT OPEN 2320 FILES LOCATED IN THE SUPERVISOR'S OFFICE OF THE UMATILLA NATIONAL FOREST LOCATED AT PENDLETON, OREGON.

ANGLE POINT 3258 WAS ESTABLISHED AT THE INTERSECTION POINT OF A SMALL CREEK WITH THE SECTION LINE BETWEEN SECTIONS 12 AND 13, T. 8 S., R. 33 E. THE DESCRIPTION'S DISTANCE CALL FROM THE CORNER OF SECTIONS 7, 12, 13 AND 18 TO THE CREEK IS 1496 FEET. FINDING NO EVIDENCE OF A CREEK AT THE CALLED DISTANCE I ESTABLISHED THE ANGLE POINT ON THE NEAREST CREEK FROM THE STATED DISTANCE. IN ADDITION, FINDING NO EVIDENCE OF THE ORIGINAL 1/4' CORNER OF SECTIONS 12 AND 13, I RE-ESTABLISHED THE 1/4' CORNER AT PROPORTIONATE DISTANCE.

THE SURVEY WAS CONDUCTED USING A TOPCON GTS-2, SEMI-TOTAL STATION AND TOPCON GTS-4 TOTAL STATION. THE BASIS OF BEARING OF THE SURVEY IS A GEODECTIC INVERSE OF GPS POSITIONS (LATITUDE & LONGITUDE) BETWEEN THE CORNER OF SECTIONS 11, 12, 13 & 14 AND A RANDOM TRAVERSE STATION (P.I. 245) LOCATED S. 88°09'09" E., 10,264.41 FEET FROM SAID CORNER.

THE WILDERNESS BOUNDARY WAS BLAZED AND MARKED BY ATTACHING METAL WILDERNESS BOUNDARY SIGNS TO TREES WITHIN A 4 FOOT CORRIDOR OF THE SURVEYED WILDERNESS BOUNDARY.

BEARING TREES WERE TIED USING EITHER THE TOPCON GTS-2 OR GTS-4. DISTANCE MEASUREMENTS TO THE BEARING TREES WERE TAKEN AT SIDE CENTER ONE FOOT ABOVE THE ROOT CROWN, AND DIAMETER'S WERE MEASURED AT BREAST HEIGHT. ALL NEW BEARING TREES ARE DOUBLE BLAZED AND HAVE A 3/4" DIAMETER BRASS WASHER STAMPED "RLS 2308" NAILED NEXT TO THE "BT" SCRIBING ON THE LOWER BLAZE.

FIELD BOOK ONE IS ON FILE AT THE SUPERVISOR'S OFFICE OF THE UMATILLA NATIONAL FOREST AT PENDLETON, OREGON.

CORNER OF SECTIONS 11, 12, 13 AND 14
FOUND A 2 1/2" ALUMINUM PIPE, WITH 3 1/4" ALUMINUM CAP, PROJECTING 6" OUT OF THE GROUND, MARKED AS SHOWN, FROM WHICH:

- 26" SAWN WESTERN LARCH STUMP BEARS, N. 25° E., 22.4 FEET, WITH SCRIBING "TBS R33E S1" VISIBLE ON SAWN LOG LYING NEXT TO THE STUMP (ORIGINAL BT).
- 16" WHITE FIR BEARS, N. 17° E., 9.1 FEET, SCRIBED "TBS R33E S12" "BT"
- 8" ALPINE FIR BEARS, S. 52° E., 44.9 FEET, SCRIBED "TBS R33E S13" "BT"
- 7" LODGEPOLE PINE BEARS, S. 79 1/2° W., 9.6 FEET, SCRIBED "TBS R33E S14" "BT"
- 6" WHITE FIR BEARS, N. 65 1/2° W., 32.9 FEET, SCRIBED "X" "BT"

THE BT'S ARE DOUBLE BLAZED AND HAVE A BRASS WASHER STAMPED "RLS 2308" NAILED TO THE LOWER BLAZE BY THE "BT" SCRIBING.

1/4 CORNER SECTIONS 12 AND 13
SET AT PROPORTIONATE DISTANCE A 2 1/2" BY 30" ALUMINUM PIPE, WITH 3 1/4" ALUMINUM CAP, 28" IN THE GROUND, MARKED AS SHOWN, FROM WHICH:

- 10" WESTERN LARCH BEARS, N. 47 1/4° E., 28.6 FEET, MARKED "1/4 S12" "BT"
- 5" LODGEPOLE PINE BEARS, S. 17° E., 11.4 FEET, MARKED "1/4 S13" "BT"
- 6" LODGEPOLE PINE BEARS, S. 29 3/4° W., 20.5 FEET, MARKED "1/4 S13" "BT"
- 6" WESTERN LARCH BEARS, N. 22 3/4° W., 21.7 FEET, MARKED "1/4 S12" "BT"

AP-3258
SET IN THE CENTER OF A SMALL CREEK A 5/8" BY 36" REBAR, WITH 3 1/4" ALUMINUM CAP, 32" IN THE GROUND, MARKED AS SHOWN, FROM WHICH:

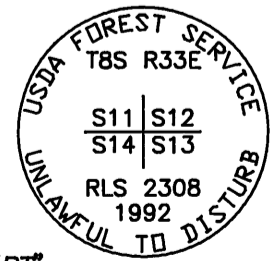
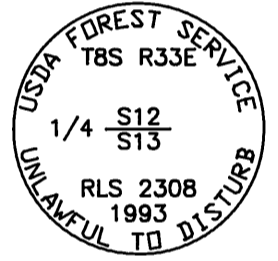
CORNER OF SECTIONS 7, 12, 13 AND 18
FOUND A 2 1/2" ALUMINUM PIPE, WITH 3 1/4" ALUMINUM CAP, PROJECTING 6" OUT OF THE GROUND, MARKED AS SHOWN, FROM WHICH:

- 9" WINDTHROWN LODGEPOLE PINE SNAG, BEARS N. 21° E., 31.7 FEET, WITH ILLEGIBLE SCRIBING VISIBLE ON PARTIALLY HEALED FACE (ORIGINAL BT; RECORD N. 20' E.)
- 5" WESTERN LARCH BEARS, N. 51° E., 48.9 FEET, SCRIBED "TBS R34E S7" "BT" ON DOUBLE BLAZE.
- 11" WINDTHROWN LODGEPOLE PINE BEARS, S. 51° E., 20.5 FEET, WITH ILLEGIBLE SCRIBING VISIBLE ON A PARTIALLY HEALED BLAZE (ORIGINAL BT; RECORD S. 52° E.)
- 12" WESTERN LARCH BEARS, S. 23 1/2° E., 24.4 FEET, SCRIBED "TBS R34E S18" "BT" ON DOUBLE BLAZE.
- 11" WINDTHROWN LODGEPOLE PINE SNAG BEARS, S. 47° W., 39.6 FEET, (ORIGINAL BT; RECORD S. 45° W.)
- 15" WESTERN LARCH BEARS, S. 73° W., 44.4 FEET, SCRIBED "TBS R33E S13" "BT" ON DOUBLE BLAZE.
- 21" WESTERN LARCH BEARS, N. 69° W., 11.1 FEET, WITH HEALED BLAZE (ORIGINAL BT; RECORD N. 74° W., 16 LINKS).

THE DOUBLE BLAZED BT'S HAVE A BRASS WASHER STAMPED "RLS 2308" NAILED TO THE LOWER BLAZE BY THE "BT" SCRIBING.

I, DAVID A. SCHLAICH, A REGISTERED LAND SURVEYOR IN THE STATE OF OREGON, HEREBY CERTIFY THAT THIS PLAT AND NOTES HEREON ARE A TRUE AND CORRECT REPRESENTATION OF A SURVEY I CONDUCTED FROM JUNE THROUGH SEPTEMBER OF 1993, AT THE REQUEST OF THE UMATILLA NATIONAL FOREST, IN ACCORDANCE WITH THE STATUTES OF OREGON AND THE 1973 B.L.M. MANUAL OF SURVEYING INSTRUCTIONS.

David A. Schlaich
DAVID A. SCHLAICH -- RLS 2308
UMATILLA NATIONAL FOREST
2517 S.W. HAILEY AVENUE
PENDLETON, OREGON 97801
PHONE (503) 278-3747



REVIEWED BY:
Dennis F. Layford 1-26-94
SIGNATURE DATE
I CERTIFY THAT THIS SURVEY WAS PERFORMED AT THE REQUEST OF THE UMATILLA NATIONAL FOREST SUPERVISOR
Wally J. Murphy 1-26-94
SIGNATURE DATE

REGISTERED PROFESSIONAL LAND SURVEYOR
David A. Schlaich
OREGON
JULY 16, 1987
DAVID A. SCHLAICH
2308
EXPIRES 12/31/94

RECEIVED AND FILED
FEB 2 1994
OFFICE OF COUNTY SURVEYOR
Robert J. Russell
DATE
SHEET 1 OF 1