

INDEX OF SHEETS	
Sht. No.	Description
1	Title Sheet
2,3,4	Survey Drawings

- S.H.R.W. Set 5/8" Iron Rod with Aluminum Cap
(State Highway Right of Way)
- ⊙ S.H.R.P. Set 5/8" Iron Rod with Aluminum Cap
(State Highway Reference Point)
- ▲ Found Monument as noted

STATE OF OREGON
DEPARTMENT OF TRANSPORTATION
STATE HIGHWAY DIVISION
Survey Filing

SPRAY-JOHN DAY RIVER (HOLMES CR. UNIT) SEC.
JOHN DAY HIGHWAY
GRANT COUNTY
MAY 1993

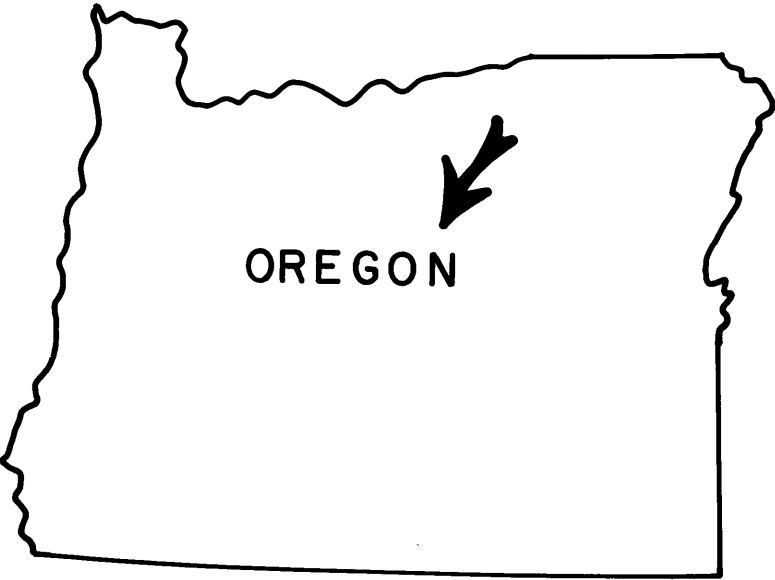
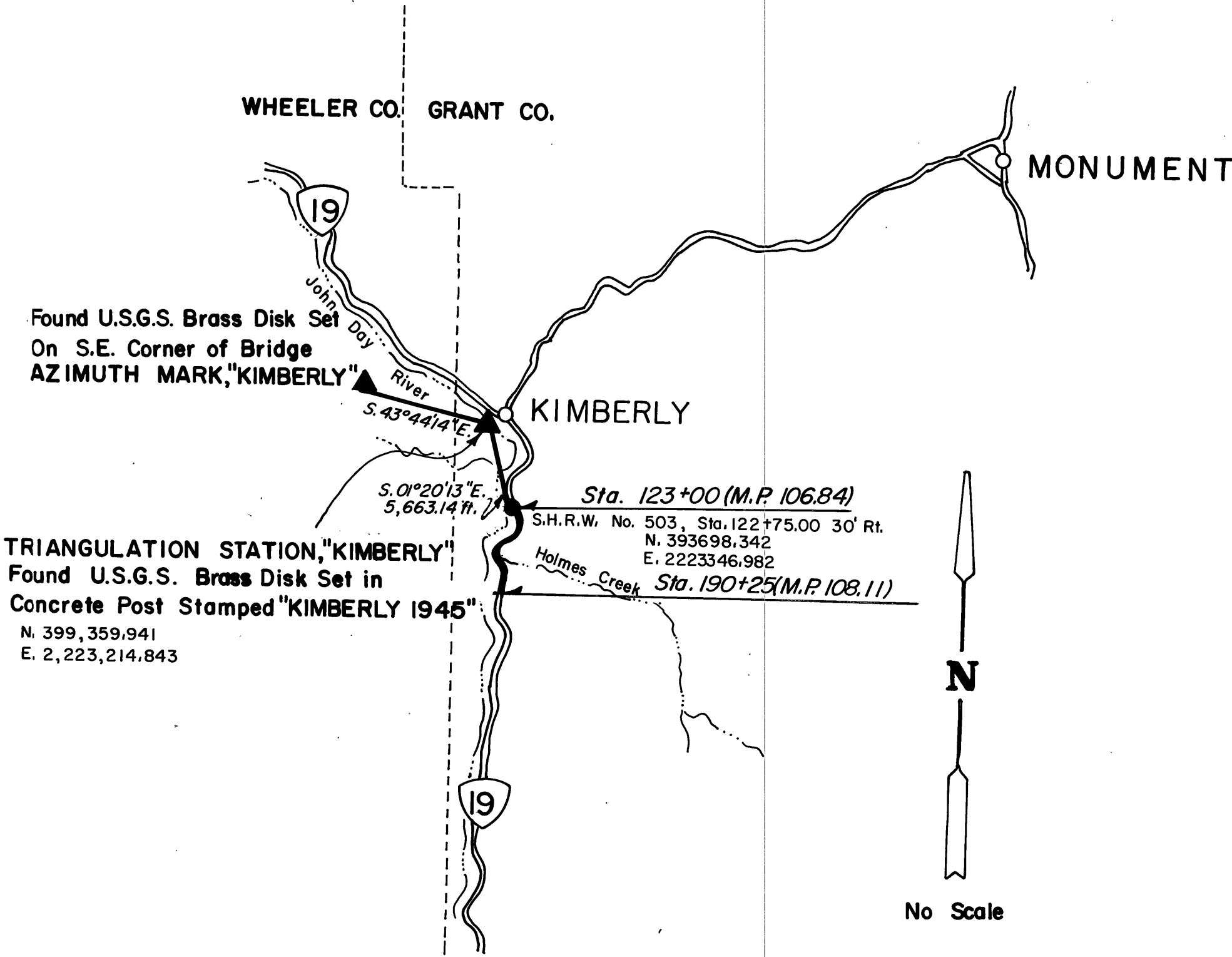
SPRAY-JOHN DAY R.(HOLMES CR. UNIT) SEC.				SHEET No.
JOHN DAY HIGHWAY				1
GRANT COUNTY				TOTAL SHEETS
FED. ROAD Div. No.	STATE	PROJECT NUMBER	FISCAL YEAR	See Index
10	OREGON			

SURVEY NARRATIVE

The purpose of this survey was to monument the Right-of-Way and highway control points for the Spray - John Day River (Holmes Creek Unit) Section on the John Day Highway (State Highway No. 19). This survey traversed through Sections 5 & 6 of T. 10 S., R. 26 E., W.M., and Sections 31 & 32 of T. 9 S., R. 26 E., W.M.. The basis of bearing for the survey was TRIANGULATION STATION "Kimberly" AZIMUTH MARK "Kimberly". Closure was within 1:57000 adjusted by compass rule.

Changes in direction of Right-of-Way and control point references were monumented using capped 5/8" x 30" iron rods with a post and paddle stamped with highway station and distance from centerline. Co-ordinates shown are Oregon Co-ordinate System of 1983 North Zone, converted to Local Datum Plane using a conversion factor of 0.9999226'. L.D.P. co-ordinates represent true ground distances. To return to Oregon System Co-ordinates, 1983, multiply L.D.P. co-ordinates by the conversion factor.

Field Notes for this survey are on file in Book No. 2890 located in the Oregon State Highway Division's Road Design Section office in Salem, Oregon.



REGISTERED PROFESSIONAL LAND SURVEYOR
Walter R. Sullivan
OREGON
WALTER ROBERT SULLIVAN
OCT. 6, 1978
#1746

Walter R. Sullivan
Expiration Date: 12-31-94
OREGON STATE HIGHWAY DIVISION
3012 Island Avenue
LaGrande, Oregon 97850