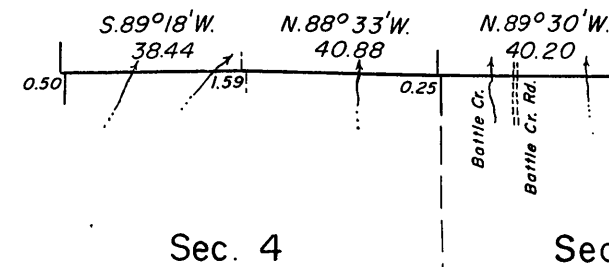


# TOWNSHIP 13 SOUTH, RANGE 26 EAST, OF THE WILLAMETTE MERIDIAN, OREGON.

## DEPENDENT RESURVEY

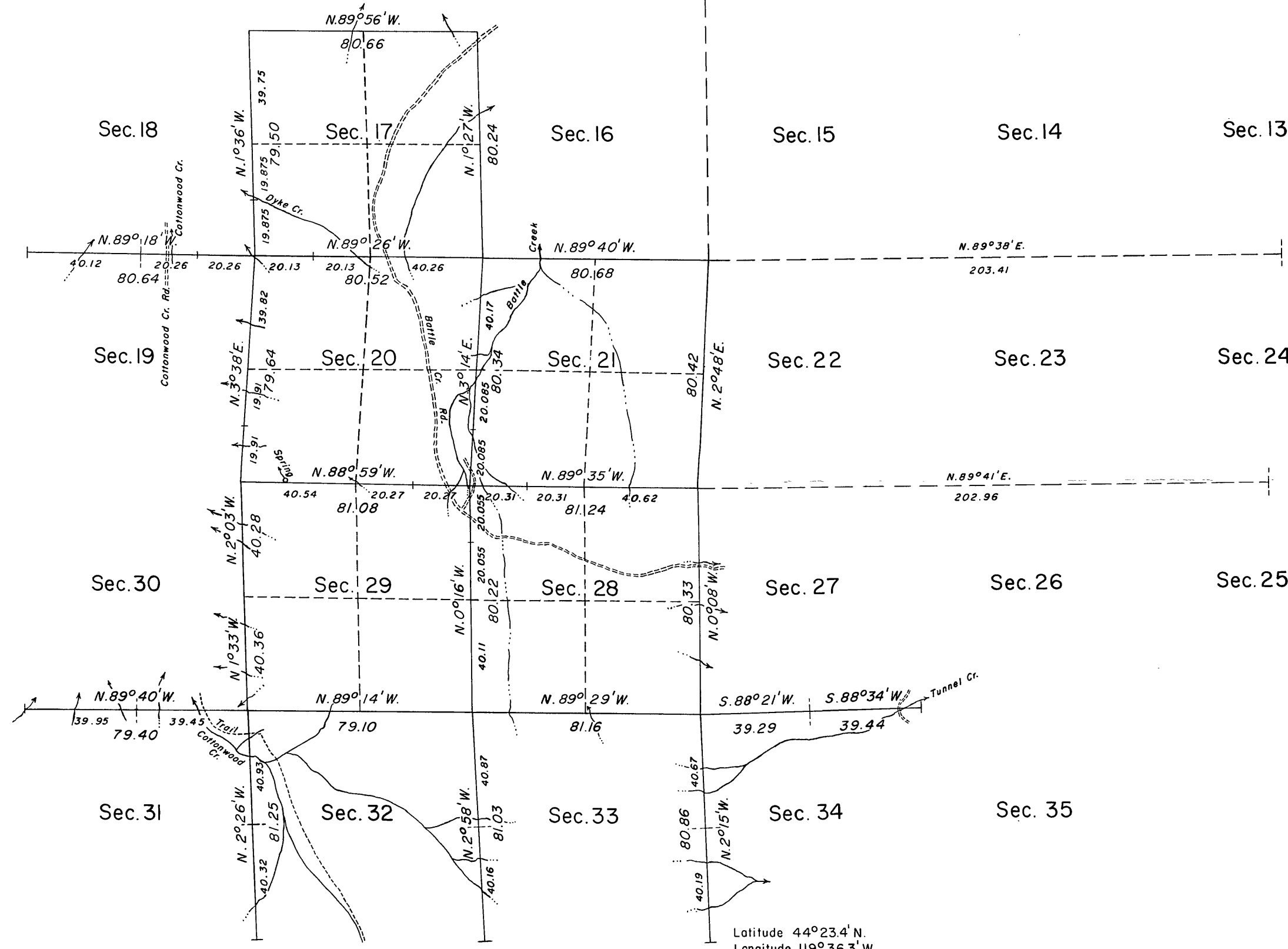
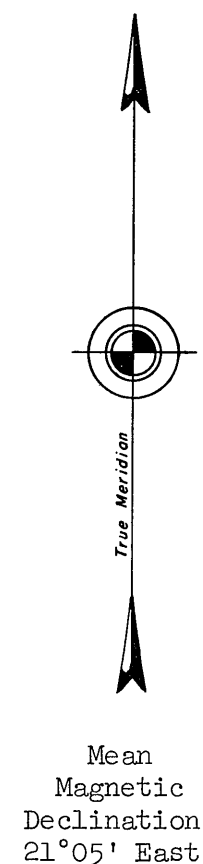
Sec. 33 Sec. 34  
THIRD STANDARD PARALLEL SOUTH



This plat represents a retracement and reestablishment of a portion of the Third Standard Parallel South, south boundary of T. 12 S., R. 26 E., and a portion of the subdivisional lines, designed to restore the corners in their true original locations according to the best available evidence. Areas are as shown on the plat approved December 1, 1873.

The Third Standard Parallel South, north boundary of the township, was surveyed by John B. David, in 1869. The east one and one-half miles of the north boundary was resurveyed and the east boundary and north four miles of the west boundary were surveyed by William H. Byars, in 1873. A portion of the subdivisional lines were surveyed by Jason Owen, in 1873. In 1880, Levi C. Walker surveyed the south boundary, the south two miles of the west boundary, retraced the south five miles of the east boundary, and completed subdivision of the township.

Survey executed by C. Albert White and Donald R. Beck, September 18 to November 14, 1962, under Special Instructions dated September 5, 1962, which provide for the surveys included under Group No. 483, Oregon.



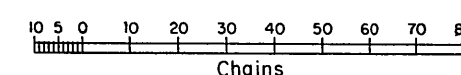
UNITED STATES DEPARTMENT OF THE INTERIOR  
BUREAU OF LAND MANAGEMENT  
Washington, D. C. December 8, 1964

This plat is strictly conformable to the approved field notes, and the survey, having been correctly executed in accordance with the requirements of law and the regulations of this Bureau, is hereby accepted.

For the Director

*E. E. Lemington*  
Chief, Division of Engineering

Timber in this area consists of yellow pine, fir, tamarack, mountain mahogany, juniper, alder, and cottonwood.



Area resurveyed: 3,200 Acres

Survey Map 130<sup>805</sup>