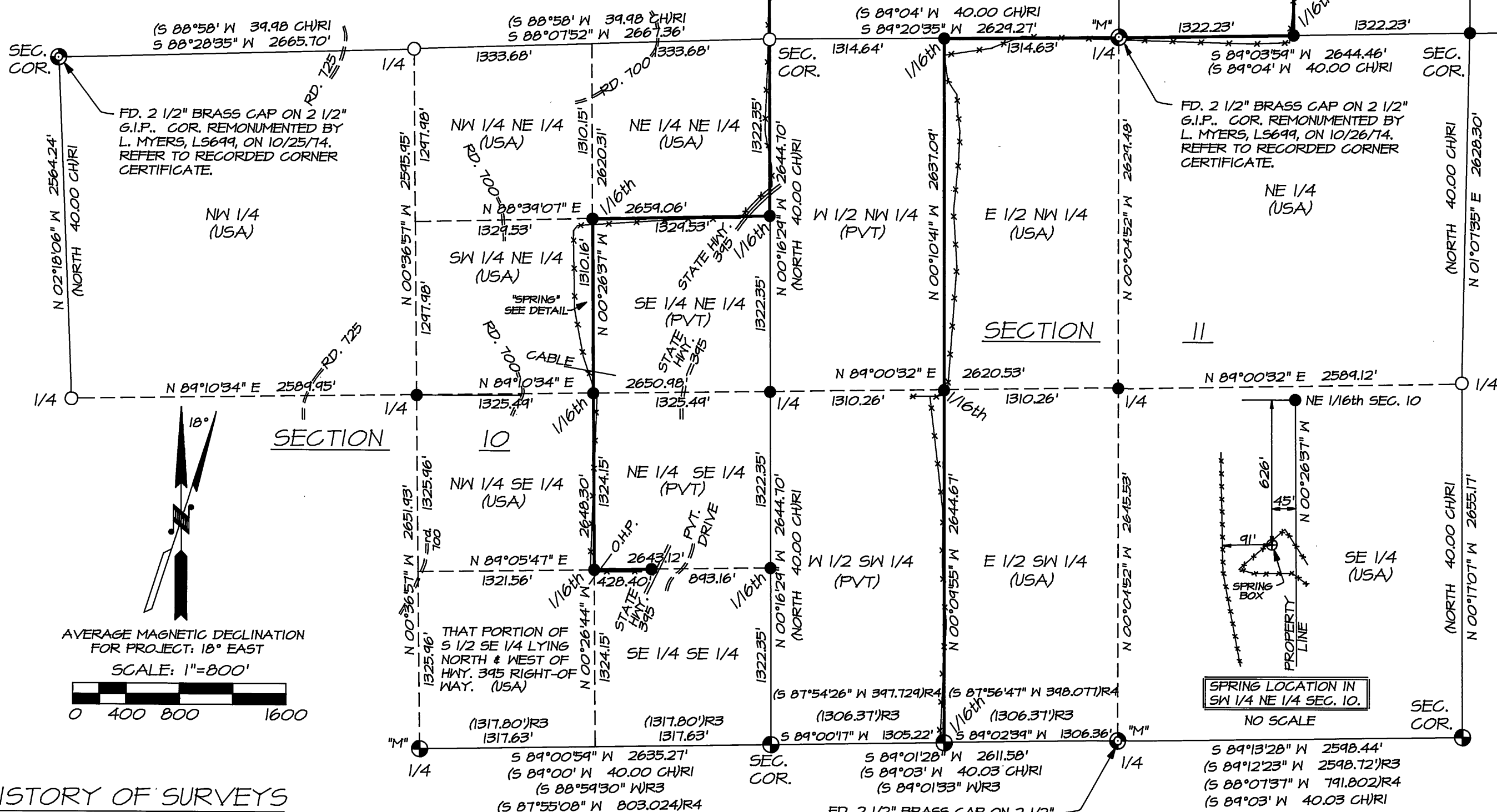


RECORD OF SURVEY PLAT  
DALE 1993 CADASTRAL SURVEY  
CONTRACT NO. 53-04R3-3-14

PERFORMED FOR THE USDA-FOREST SERVICE,  
UMATILLA NATIONAL FOREST  
SECTIONS 2, 10, 11 & 12, T7S., R31E., W.M.  
GRANT COUNTY, OREGON.

LEGEND

- - FOUND EXISTING CORNER MONUMENT AS NOTED.
- - FOUND ACCEPTABLE ORIGINAL CORNER EVIDENCE AND REMONUMENTED WITH 2 1/2" X 30" ALUM. PIPE WITH 2 1/2" ALUM. CAP. SEE CORNER RECORD FILED SEPARATELY.
- - FOUND 2 1/2" BRASS CAP ON 2 1/2" GALV. IRON PIPE SET BY LARRY D. BISHOP, LS 896, AS INDICATED ON MAP OF SURVEY NO. 654 OR 655.
- - CORNER ESTABLISHED BY SURVEY. MONUMENTED WITH A 2 1/2" X 30" ALUM. PIPE WITH 2 1/2" ALUM. CAP. SEE CORNER RECORD FILED SEPARATELY.
- NATIONAL FOREST BOUNDARY POSTED ON THIS SURVEY WITH 6" STEEL OR WOOD FENCE POSTS WITH SIGNS 54-2 ATTACHED.
- (XOX)R1 - RECORD REPORTED ON CONTRACT NO. 380 BY FRANK W. CAMPBELL, U.S. DEPUTY SURVEYOR, UNDER CONTRACT DATED MARCH 19, 1881.
- (XOX)R2 - RECORD REPORTED ON CONTRACT NO. 380 BY HENRY MELDRUM, U.S. DEPUTY SURVEYOR, UNDER CONTRACT DATED MARCH 19, 1881.
- (XOX)R3 - RECORD REPORTED BY LARRY D. BISHOP, LS 896, ON MAP OF SURVEY NO. 654 OR 655.
- (XOX)R4 - RECORD REPORTED BY DAVID A. SCHLAICH, LS 2308, ON MAP OF SURVEY NO. 1267. THIS MAP REPORTS DIMENSIONS IN GRID BEARING, SEA LEVEL DISTANCE AND METERS.
- == - ROADS.
- - - - - FENCES.
- O.H.P. - OVERHEAD POWER LINE.
- "M" - INDICATES EXISTING CORNER MONUMENT MAINTAINED ON THIS SURVEY.



HISTORY OF SURVEYS

THE NORTH LINE OF TOWNSHIP 7 SOUTH, RANGE 31 EAST, W.M., WAS SURVEYED BY HENRY MELDRUM, U.S. DEPUTY SURVEYOR, UNDER CONTRACT NO. 380, DATED MARCH 19, 1881.

THE SUBDIVISIONS OF TOWNSHIP 7 SOUTH, RANGE 31 EAST WERE MADE BY FRANK W. CAMPBELL, U.S. DEPUTY SURVEYOR, UNDER CONTRACT NO. 380, DATED MARCH 19, 1881.

IN 1980 AND 1981, LARRY D. BISHOP, L.S. 896, UNDER USDA/FOREST SERVICE CONTRACT NO. 53-04R3-0-01147, SUBDIVIDED SECTIONS 14 AND 15 AND MONUMENTED CERTAIN CORNERS.

SURVEYOR'S CERTIFICATE

I, WILLIAM R. WELLS, A REGISTERED PROFESSIONAL LAND SURVEYOR IN THE STATE OF OREGON, DO HEREBY CERTIFY THAT THIS PLAT, AND THE CORNER RECORDS FILED SEPARATELY, ARE A CORRECT REPRESENTATIVE OF A SURVEY PERFORMED BY ME DURING THE MONTHS OF JULY, AUGUST AND SEPTEMBER, 1993, AT THE REQUEST OF THE USDA, FOREST SERVICE, AND IN CONFORMANCE WITH MY CONTRACT.

THIS CERTIFICATION APPLIES TO THIS PLAT, AND THE CORNER RECORDS FILED SEPARATELY.

REGISTERED  
PROFESSIONAL  
LAND SURVEYOR

Will. R. Wells

OREGON  
JULY 22, 1977  
WILLIAM R. WELLS  
1106  
RENEWED 12/31/94

Will. R. Wells

WILLIAM R. WELLS, PLS  
OREGON LICENSE NO. 1106

EXAMINED AND ACCEPTED FOR THE U.S. FOREST SERVICE THIS 19TH  
DAY OF JANUARY, 1994.

Dennis L. Gaylord, COR.

I CERTIFY THAT THIS SURVEY WAS PERFORMED AT THE REQUEST OF THE UMATILLA NATIONAL FOREST.

John P. Kline  
NATIONAL FOREST SUPERVISOR

1/20/94  
DATE

SECTION 1

FD. 3" BRASS CAP ON 2 1/2" G.I.P.  
BY BLM., MAP OF SURVEY NO. 781.

SECTION 12

NARRATIVE OF SURVEY

THIS SURVEY WAS PERFORMED AT THE REQUEST OF THE UMATILLA NATIONAL FOREST, UNDER CONTRACT NO. 53-04R3-3-14. THE PURPOSE OF THE SURVEY WAS TO PARTIALLY SUBDIVIDE SECTIONS 2, 10 AND 11, T7S., R31E., W.M., GRANT COUNTY, OREGON AS SHOWN ON THIS PLAT. NATIONAL FOREST BOUNDARIES WERE POSTED WITH 6 FOOT STEEL OR WOOD FENCE POSTS WITH NATIONAL FOREST BOUNDARY SIGNS 54-2 ATTACHED. CORNER RECORDS WERE PREPARED AND RECORDED SEPARATELY FOR EACH CORNER MAINTAINED, REMONUMENTED, RE-ESTABLISHED OR ESTABLISHED.

SEVERAL PUBLIC LAND SURVEY CORNERS WERE DECLARED LOST AFTER DILIGENT SEARCH AND WERE RE-ESTABLISHED AS FOLLOWS:

THE WEST 1/4 CORNER OF SECTION 2 WAS RE-ESTABLISHED BY SINGLE PROPORTION MEASUREMENT BETWEEN THE RECOVERED NORTHWEST AND SOUTHWEST CORNERS OF SECTION 2.

THE EAST 1/4 CORNER OF SECTION 2 WAS RE-ESTABLISHED BY SINGLE PROPORTION MEASUREMENT BETWEEN THE RE-ESTABLISHED SOUTHEAST CORNER AND RECOVERED NORTHEAST CORNERS OF SECTION 2.

THE SOUTHEAST CORNER OF SECTION 2 WAS RE-ESTABLISHED BY DOUBLE PROPORTION MEASUREMENT BETWEEN THE RECOVERED NORTHEAST AND SOUTH 1/4 CORNERS OF SECTION 2, THE RECOVERED EAST 1/4 CORNER OF SECTION 11 AND THE RECOVERED SOUTHEAST CORNER OF SECTION 1.

THE SOUTH 1/4 CORNER OF SECTION 1 WAS RE-ESTABLISHED BY SINGLE PROPORTION MEASUREMENT BETWEEN THE RECOVERED SOUTHEAST CORNER OF SECTION 1 AND THE RE-ESTABLISHED SOUTHWEST CORNER OF SECTION 1.

THE WEST 1/4 CORNER OF SECTION 11 WAS RE-ESTABLISHED BY SINGLE PROPORTION MEASUREMENT BETWEEN THE RECOVERED NORTHWEST AND SOUTHWEST CORNERS OF SECTION 11.

MEASUREMENTS WERE MADE WITH A SOKKIA SET 3B AUTOMATIC TOTAL STATION WITH STANDARD ERRORS OF PLUS OR MINUS 3 SECONDS ANGULAR, AND 5MM, PLUS OR MINUS 3 PARTS PER MILLION TIMES DISTANCE FOR LINEAR MEASUREMENT. CLOSED TRAVERSES WERE ADJUSTED BY LEAST SQUARES METHOD. OFFSETS TO POSTED LINE WERE MADE WITH A HAND COMPASS AND STEEL TAPE FROM CONTROL AND POSTING POINTS.

BEARINGS ARE BASED ON THE MEAN CALCULATED GEODETIC BEARING OF NORTH 61°58'26" EAST, BETWEEN "STATION 9227, GPS DALE 04 1992" AND "STATION 9226, GPS DALE 02 1992". THESE CONTROL STATION POSITIONS ARE REPORTED ON GRANT COUNTY MAP OF SURVEY NO. 1267.

RECEIVED AND  
FILED

MAR 4 1994

OFFICE OF COUNTY CLERK  
Grant County, Oregon  
Attest: [Signature]

WILLIAM R. WELLS, PLS  
357 N.E. HWY. 11  
P.O. BOX 1696  
PENDLETON, OR 97801  
PHONE: (503) 276-6362

DATE: 12/8/93 DR. BY: WEG  
CK. BY: WRW NO: 93-183

PROJECT:

DALE 1993  
CADASTRAL  
SURVEY

CONTRACT NO.  
53-04R3-3-14

GRANT COUNTY MAP OF SURVEY No. 1298