

LEGEND

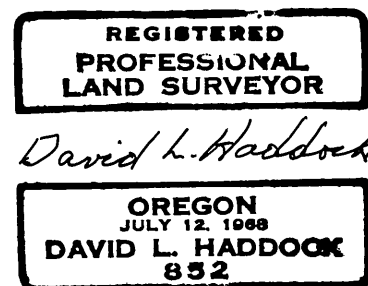
- Found standard BLM brass cap.
  - ⊕ Set 2 1/2" x 30" aluminum monument with 2 1/2" cap.
- N00°31'E      Record Bearing  
(2647.92)      Record Distance  
N00°31'00"E      Surveyed Bearing (geodetic)  
2647.77      Surveyed Distance

SURVEY EQUIPMENT AND METHOD USED

A Wild GPS System 200 was used to perform the survey. Corner coordinates were determined using vectors from a single base station with geodetic position determined from the Forest Service Dale 02 triangulation station. Coordinates were verified with second readings at a different time. These positions were checked against the 1968 BLM survey record with reasonable agreement. The record BLM bearing between the corner of sections 28, 29, 32 and 33 and the quarter corner of sections 28 and 29 was used as the basis of bearing. The brass caps shown on the drawing and set in their 1968 survey were accepted as the valid corner positions.

SURVEY HISTORY

The original subdivision of T.7S., R.32E., W.M. was performed by Rufus Moore under contract No. 382 dated 1881. The BLM made a dependent survey of a portion of this township under special instructions dated May 1957. They remonumented corners from the original survey and set selected sixteenth corners. These corners were monumented using standard BLM brass caps. All the pertinent corners of record were found in good condition with the exception that some additional witness trees were necessary to meet Oregon State standards.



SURVEYOR'S CERTIFICATE

I, David L. Haddock, a registered Professional Land Surveyor in the State of Oregon, hereby certify that this plat and the notes hereon are a correct representation of a survey performed under my direct supervision in accordance with the statutes of the State of Oregon and at the request of the USDA, Forest Service.

*David L. Haddock*  
Oregon License No. 0852

EXAMINED AND ACCEPTED FOR  
THE U. S. FOREST SERVICE  
THIS 25<sup>TH</sup> DAY OF October 1993.  
*Dennis L. Gaylord*  
COR.

I CERTIFY THAT THIS SURVEY  
WAS PERFORMED AT THE REQUEST  
OF THE UMATILLA  
NATIONAL FOREST SUPERVISOR  
*John S. Sauer* 10/26/93  
SIGNATURE DATE

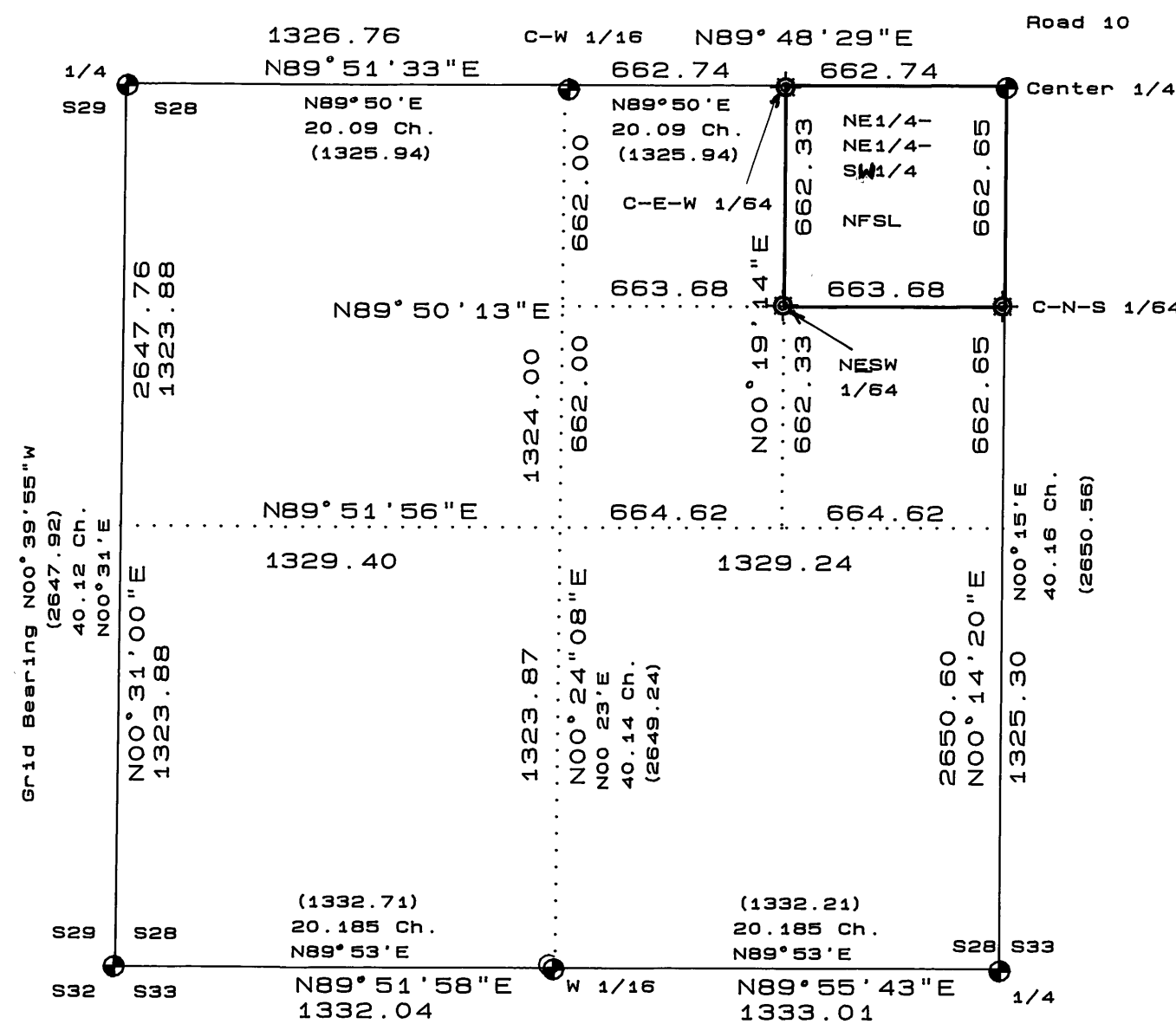
The following Certified Record of Land Corner Monumentation forms for T.7S., R.32E., W.M. were received from David L. Haddock with this map of survey and entered into the official county surveyor records:  
Corner Index No. T9, T10, T11, V9, V11, and 1/64 corners as follows: C-E-W, NE-SW, and C-N-S of Section 28.

Grant County Surveyor's Certificate

I hereby certify that the Certified Record of Land Corner Monumentation forms referenced above and this map of survey have been filed in the office of the Grant County Surveyor this 21<sup>st</sup> day of Jan., 1994.  
*Robert D. Beyer*

NARRATIVE

The purpose of this survey was to locate, monument and post the boundaries of the NE1/4 of the NE1/4 of the SW1/4 of Section 28, T.7S., R.32E., W. M. which is National Forest system land. The survey was performed during July thorough September, 1993 at the request of the USDA Forest Service, Umatilla National Forest. The surrounding land is owned by the Louisiana Pacific Corporation.



RECEIVED AND  
FILED

JAN 21 1994

OFFICE OF COUNTY SURVEYOR  
*Robert D. Beyer*

David L. Haddock  
Surveyor and Engineer  
P. O. Box 1574  
Pendleton, OR 97801-0450  
(503) 276-2193

Survey for Umatilla National Forest  
Mote 1993 Cadastral Survey  
Contract Number 53-04R3-3-22  
NE1/4 of NE1/4 of SW1/4, Section 28  
Township 7 South, Range 32 East, W.M.  
10.09 Acres in Grant County, Oregon

Surveyed July-September, 1993  
GPS Observation Field Book No. 1  
Pages 12-17 and 32-35  
Corner Maintenance and Monumentation  
Field Book No. 1  
Pages 6-10 and 21-23