

# A PORTION OF "MALHEUR CADASTRAL"

SHEET 1 OF 2

LAKE T.16S., R.33 1/2E.  
SECTION 4  
GRANT COUNTY, OREGON

Survey by: Susan E. Newstetter, P.L.S. 2405  
D. Mitchell Ferguson, Surv. Tech.  
Rick Saul, Surv. Tech.

Reviewed by: Douglas M. Ferguson, P.L.S. 848

Drawn by: Kenneth H. Delano Jr., L.S.I.T. 1273  
M. Chris Maynard  
For: U.S.D.A. Forest Service  
Malheur National Forest

## NARRATIVE

This survey was performed under contract for the Malheur National Forest for the purpose of marking and posting the Forest boundary in Section 4, T.16S., R.33 1/2 E., W.M.

In order to perform this survey the traverse was run through all of the controlling corners. I recovered all necessary original corner evidence to complete this survey.

As shown on my map of survey the two closing corners were found to be off of the 3rd Standard Parallel South (senior line) and were amended to the senior line as follows:

S5 S4  
C/C  
Projecting the bearing between the original evidence for the 1/4 corner 1674.49 feet south and this recovered original closing corner, I found the true point of intersection on the senior line to be S00°02'43"W, 2.46 ft. I amended the original monument and monumented the point of intersection.

S4 S3  
C/C  
Projecting the bearing between the original evidence for the 1/4 corner 1390.86 feet south and this recovered original closing corner, I found the true point of intersection on the senior line to be N00°07'10"E, 9.28 ft. I amended the original monument and monumented the point of intersection.

1/4 S4  
I established this corner on the senior line at mid-point longitudinally, utilizing cardinal equivalents between CC 5/4 and CC 4/3.

The position of the original closing corners control the corner positions to the south as appropriate.

The "Certified Record of Land Corner Monumentation" forms as referenced to this Map of Survey and the notes shown on the Map should be considered a substantial part of this Narrative as they contain detailed information as to the evaluation of evidence and monumentation work performed.

Positional control for this survey is provided by a closed traverse network. A Wild TC1600 total station was used to obtain measurements and field set monuments from the survey control. A Zeos Notebook computer (IBM compatible 386) utilizing Wildsoft software was used to perform the computations and the Map was prepared utilizing AutoCad r.12. The basis of bearing was determined by solar observation to determine a true meridian through the center of the project. Field notes and computations are on file in the office of Ferguson Surveying and Engineering, Mt. Vernon, Oregon 97865.

I, Susan E. Newstetter, Registered Professional Land Surveyor, in the State of Oregon, hereby certify that this Map, notes and records hereon or reference, are a correct representation of the survey I performed during the months of May 1993 - September 1993 for the U.S. Forest Service in accordance with the Statutes of the State of Oregon and the articles of my Contract Number 53-04KK-2-02803.

*Susan E. Newstetter, PLS 2405*

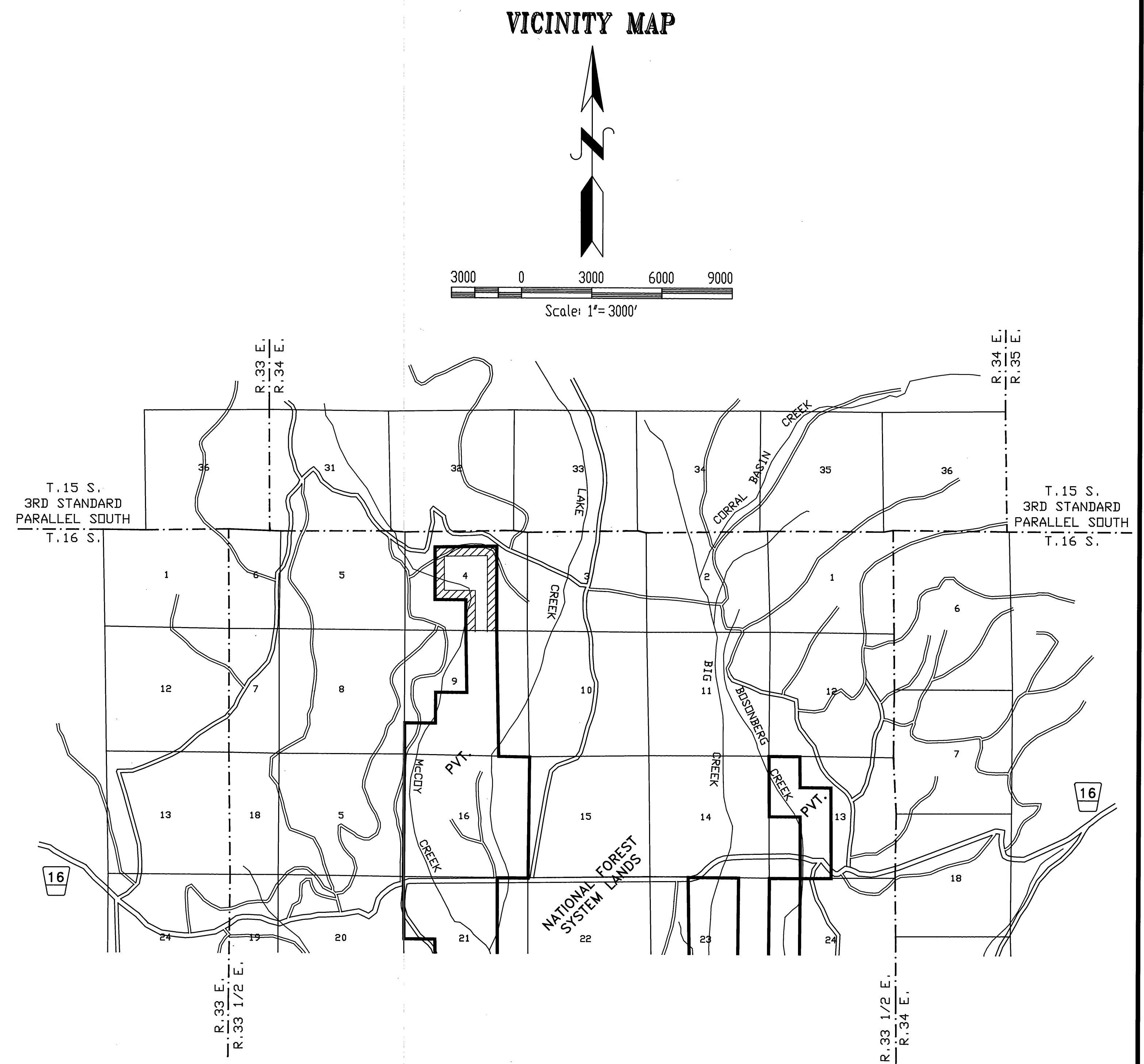
SUSAN E. NEWSTETTER, PLS 2405  
Staff Surveyor  
Ferguson Surveying and Engineering

## HISTORY OF SURVEYS

1883 - Henry W. Cooke, U.S. Deputy Surveyor, conducted the original survey of the south township line of T.15S., R.34E., W.M. (3rd Standard Parallel South), under GLO Contract No. 470, dated April 14, 1883 and approved December 3, 1883.

1884 - Henry W. Cooke, U.S. Deputy Surveyor, conducted the original subdivision of T.16S., R.33 1/2 E., W.M., under GLO Contract No. 494, dated January 16, 1884 and approved August 2, 1884.

1983 - David B. Armstrong, PLS 1026, conducted a dependent re-survey of a portion of the north line of Section 9 while under contract with the Malheur National Forest. See Grant County Map of Survey No. 794.



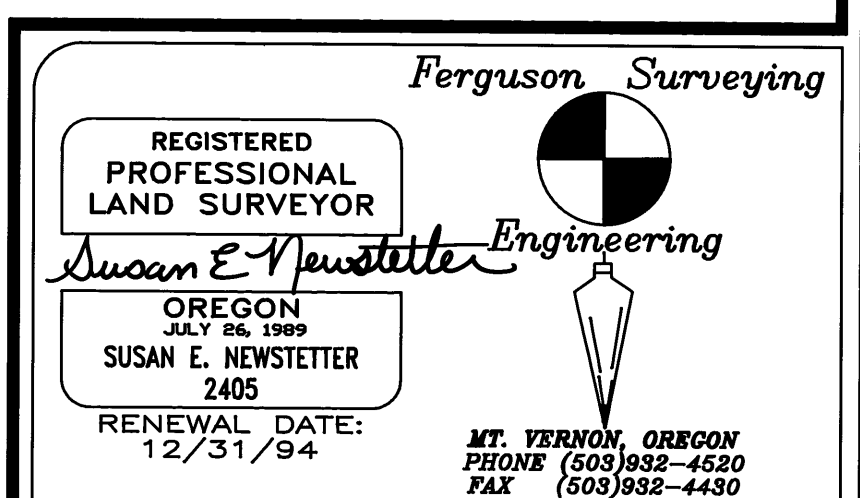
RECEIVED AND  
FILED

JAN 2 1 1994

GRANT COUNTY SURVEYOR

By *[Signature]*

GRANT COUNTY MAP OF SURVEY NO. 1283



EXAMINED AND ACCEPTED FOR THE U.S. FOREST SERVICE  
THIS 14th DAY OF December 1993

SIGNATURE [Signature]  
C.O.R.

I CERTIFY THAT THIS SURVEY WAS PERFORMED AT THE  
REQUEST OF THE Malheur National Forest

SIGNATURE [Signature] FOREST SUPERVISOR DATE 12/15/93