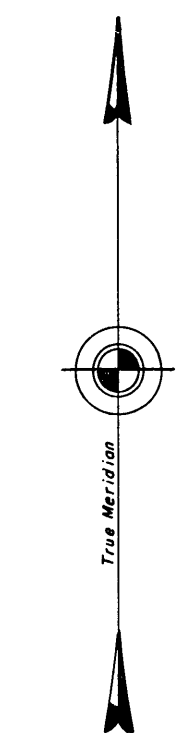
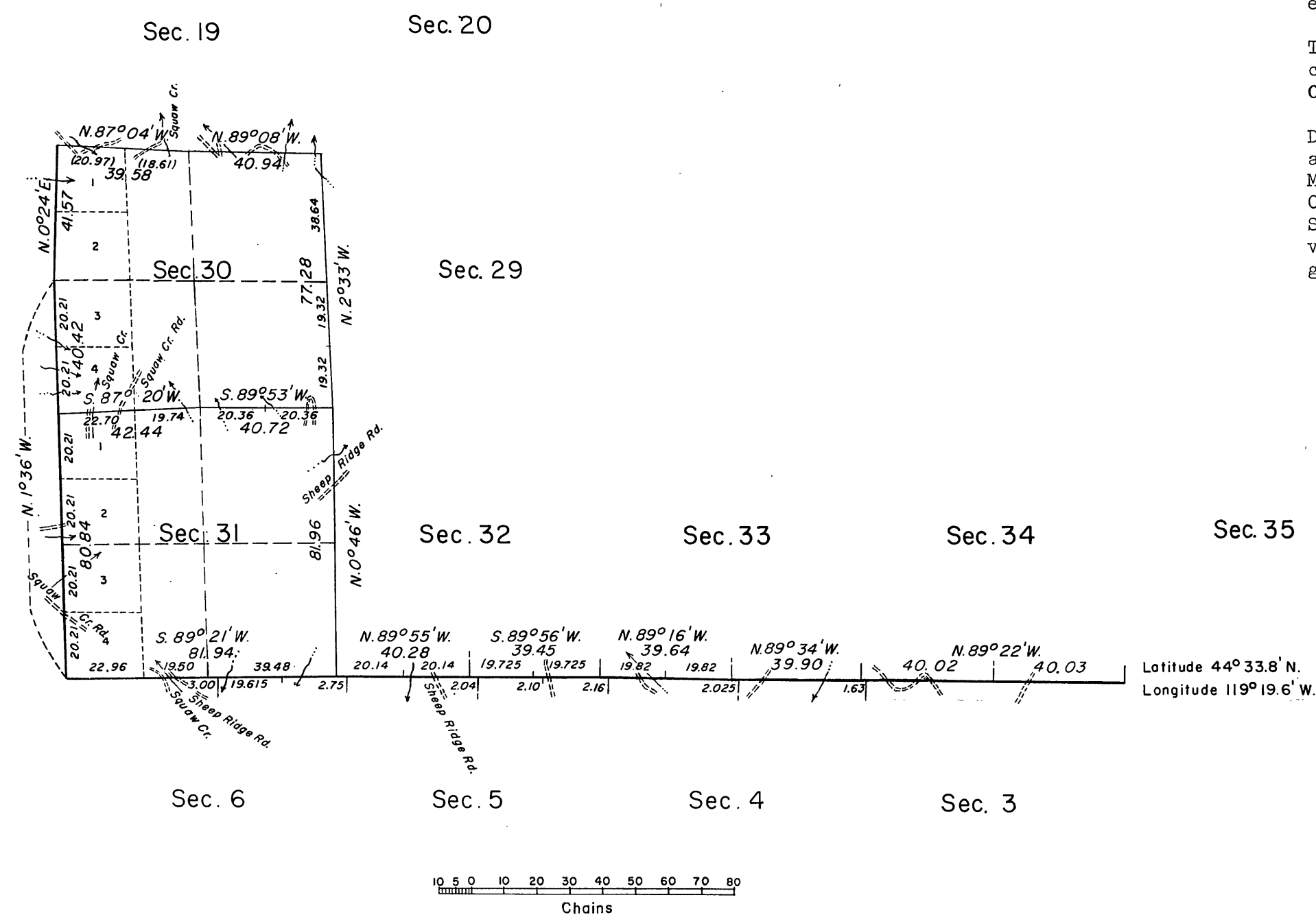


# TOWNSHIP 11 SOUTH, RANGE 28 EAST, OF THE WILLAMETTE MERIDIAN, OREGON.

## DEPENDENT RESURVEY AND SUBDIVISION



Mean  
Magnetic  
Declination  
21°45' East



Area resurveyed: 1,328.60 Acres

This plat represents a retracement and reestablishment of a portion of the south boundary and subdivisional lines of T. 11 S., R. 28 E., Willamette Meridian, Oregon, designed to restore the corners in their true original locations according to the best available evidence. The lottings and areas are as shown on the plat approved January 17, 1881.

The south boundary of the township was surveyed by William H. Byars in 1873.

The south boundary was retraced by Aaron F. York in 1880, and resurveyed by William R. Graddon in 1884.

The west boundary and subdivisional lines were surveyed by Aaron F. York in 1880.

The west boundary was dependently resurveyed in 1962, concurrently with this resurvey, under Group No. 319, Oregon.

Dependent resurvey of a portion of the south boundary and subdivisional lines, T. 11 S., R. 28 E., Willamette Meridian, Oregon, executed by C. Albert White, beginning October 11, 1962, and completed November 13, 1962, under Special Instructions dated October 1, 1962, which provide for the surveys included under Group No. 490, Oregon.

Latitude 44°33.8' N.  
Longitude 119°19.6' W.

UNITED STATES DEPARTMENT OF THE INTERIOR  
BUREAU OF LAND MANAGEMENT  
Washington, D. C. August 20, 1964

This plat is strictly conformable to the approved field notes, and the survey, having been correctly executed in accordance with the requirements of law and the regulations of this Bureau, is hereby accepted.

For the Director

*E. J. Lemington*  
Chief, Division of Engineering

Timber in this area consists of yellow pine, white pine, white fir, Douglas fir, tamarack, juniper, and mountain mahogany.