

SURVEY CORRECTION PLAT

of Milton Stevens Placer in the City of Granite, Grant County, Oregon

LOTS 7, 8, 9 & 10 of Section 4, T9S, R35½E, WM

NARRATIVE

In 1985, I recorded a survey performed for the USDA, Forest Service under Contract No. 53-04M3-3-2928 as Grant County Map of Survey No. 895. On Map 6 of 6, I made a computation error which was discovered by Grant County Surveyor Bob Baggett while performing a survey for the City of Granite. I made a 1° error when I converted the bearing to azimuth from corner No. 1 of the Montello Placer Mineral Survey No. 391 to the SW corner of Milton Stevens Placer Mineral Survey No. 94. This caused an approximate 12 foot error in the placement of the SW corner of the Milton Stevens Placer using this tie as the best available information for locating said corner.

Knowing that no other survey, except one by myself, had been performed or any improvements made that relied on the established positions for the Milton Stevens corners, it was determined to relocate the five affected corners as shown on this plat rather than create another monumented position. An error had been made and the monuments as previously established were not correct. The subdivision of Section 4 was not affected by this error.

I had used the bearings as shown on the plat for Stevens Addition as the latest and best data available to solve the placement of the NW and SE corners of Milton Stevens. It was decided as a compromise, and the BLM's recommended means, to use the broken boundary method as stipulated in the MANUAL OF INSTRUCTIONS FOR THE SURVEY OF PUBLIC LANDS to determine the location for these two corners. I do not wholeheartedly support the broken boundary solution as truly following in the foot steps of the earlier surveyors, but the results are only slightly different than by my preferred method.

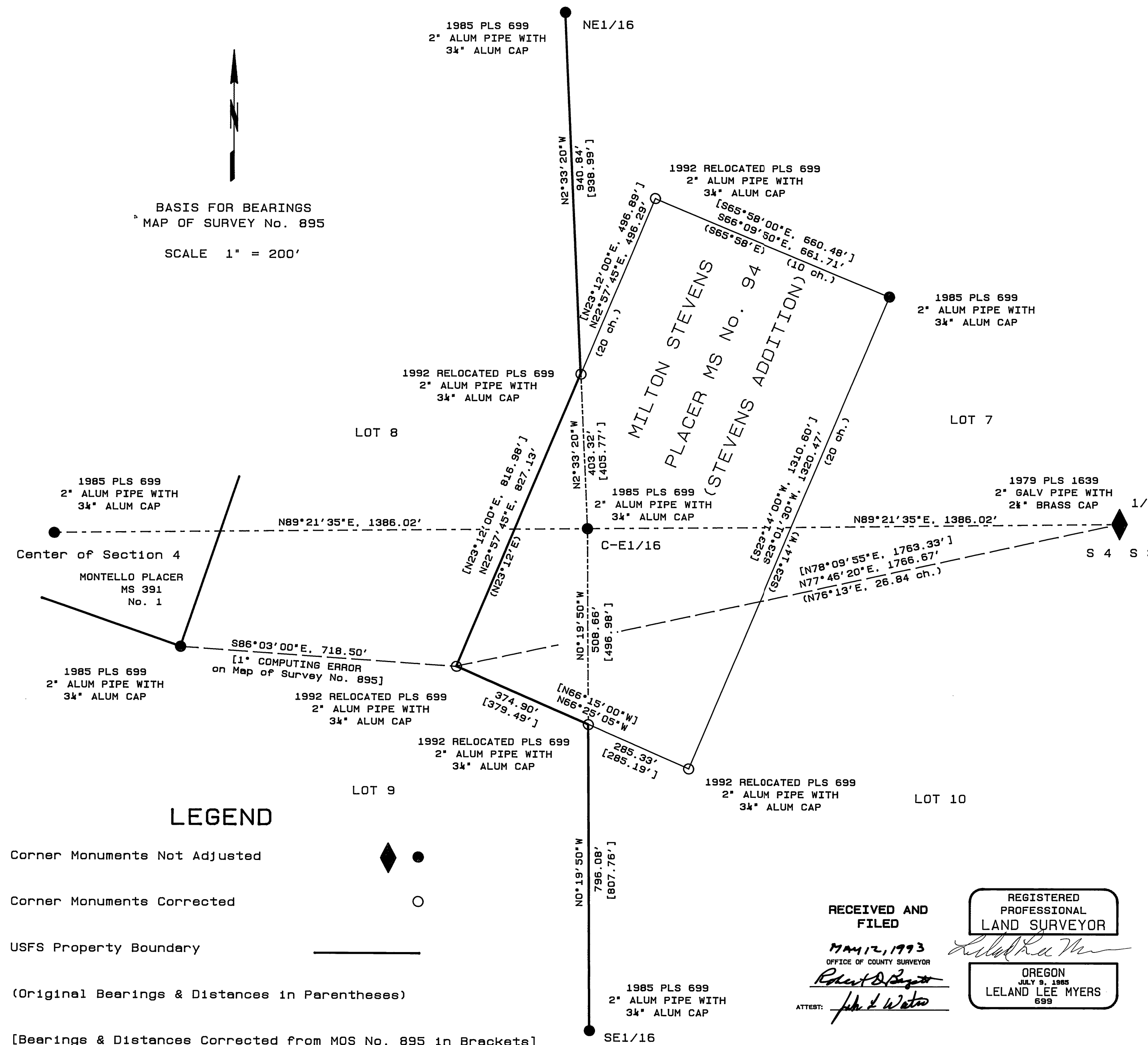
All the information contained in the narrative for Map of Survey No. 895 is pertinent and it is important that it be referred to when using this map.

CERTIFICATION

I, Leland Lee Myers, a Professional Land Surveyor in the State of Oregon, located at 587 E Auburn Street, PO Box 98, Sumpter, OR 97877, do hereby certify that I did correct the placement of the five monuments as shown on this plat on December 7 & 9, 1992, and that the information shown hereon is correct to the best of my knowledge.

BASIS FOR BEARINGS
MAP OF SURVEY No. 895

SCALE 1" = 200'



LEGEND

Corner Monuments Not Adjusted

Corner Monuments Corrected

USFS Property Boundary

(Original Bearings & Distances in Parentheses)

[Bearings & Distances Corrected from MOS No. 895 in Brackets]

RECEIVED AND
FILED

MAY 12, 1993
OFFICE OF COUNTY SURVEYOR

Robert D. Baggett
ATTEST: John L. Watson

REGISTERED
PROFESSIONAL
LAND SURVEYOR

OREGON
JULY 9, 1985
LELAND LEE MYERS
699

MAP OF SURVEY NO. 1259