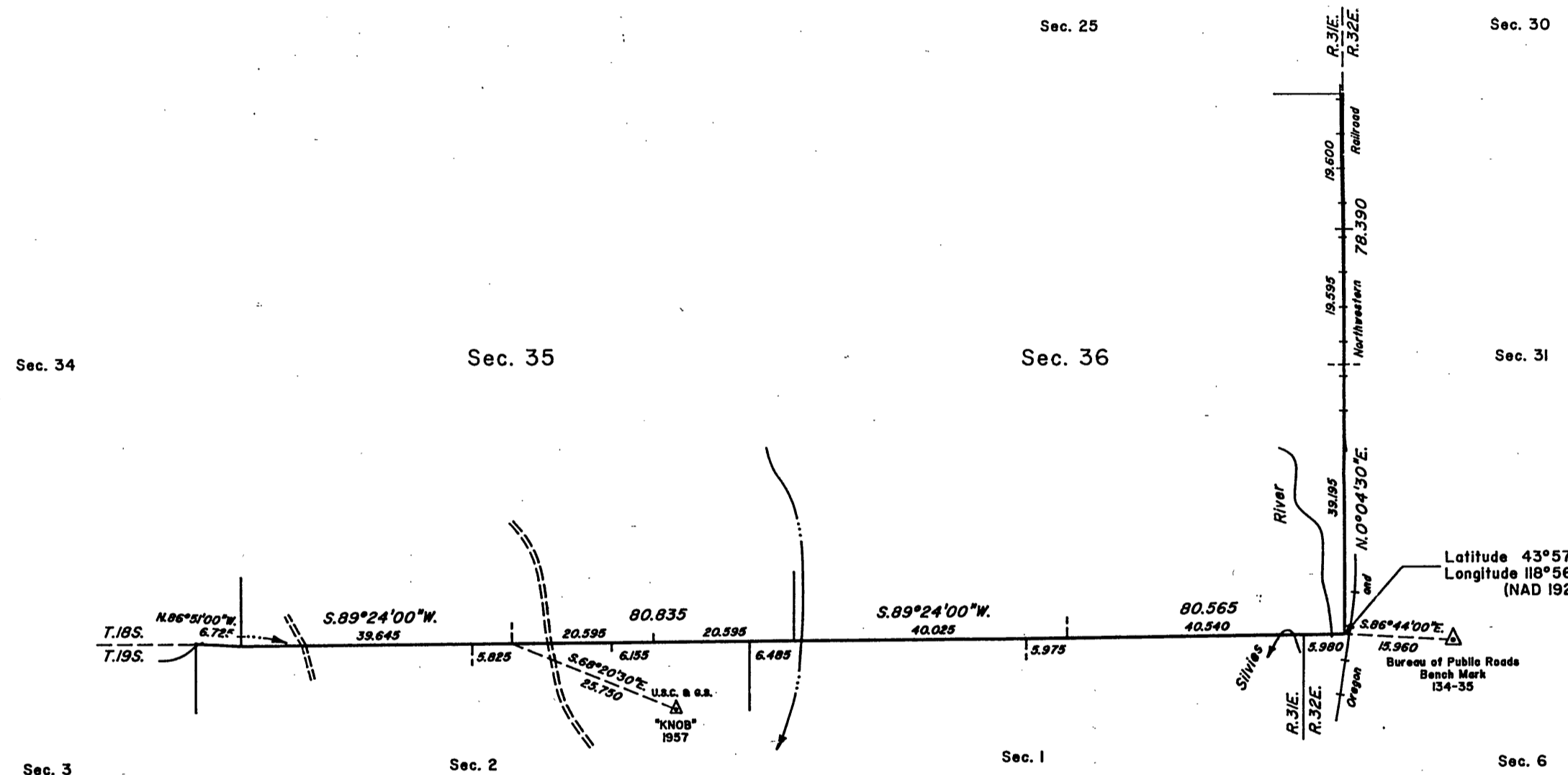
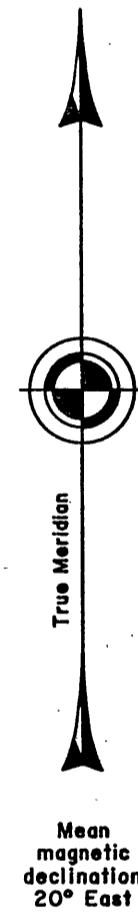


TOWNSHIP 18 SOUTH, RANGE 31 EAST, OF THE WILLAMETTE MERIDIAN, OREGON

DEPENDENT RESURVEY



A history of surveys is contained in the field notes.

This plat represents a dependent resurvey of a portion of the south and east boundaries, T. 18 S., R. 31 E., Willamette Meridian, Oregon, designed to restore the corners in their true original locations according to the best available evidence.

The survey was executed by Philip G. Griffin, Cadastral Surveyor, beginning July 28, 1986, and completed September 4, 1986, pursuant to Special Instructions dated June 10, 1986, under Group Number 1330, Oregon.

Timber in this area consists of pine.

UNITED STATES DEPARTMENT OF THE INTERIOR
BUREAU OF LAND MANAGEMENT

Portland, Oregon August 26, 1991

This plat is strictly conformable to the approved field notes, and the survey, having been correctly executed in accordance with the requirements of law and the regulations of this Bureau, is hereby accepted.

For the Director

Wayne M. Herlihy
Chief Cadastral Surveyor of Oregon

RECEIVED AND FILED
FEB 10 1992

OFFICE OF COUNTY SURVEYOR
Philip G. Griffin

