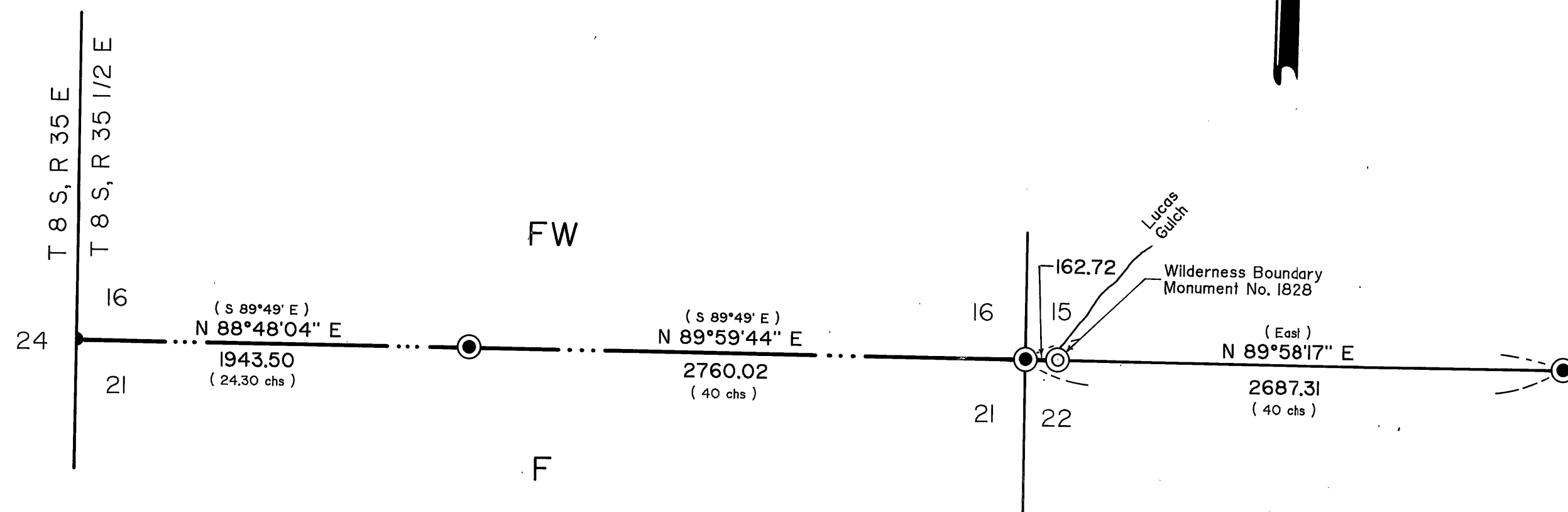


BASIS OF BEARING

Solar observations taken at a point 1626.28 feet South and 49.57 feet East of the Northwest corner of Section 27 Township 8 South, Range 35 1/2 East of the Willamette Meridian. (Hour angle method).

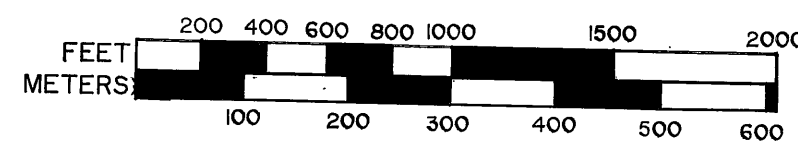
Date	August 24, 1987
Latitude	44°50'32"
Longitude	118°24'58"
Time	12:19 G.C.T.
Magnetic Declination	17° East



LEGEND

- Found aluminum cap monument (see History of Surveys)
- ⊙ Found original GLO survey evidence and set a 2 1/2" x 30" aluminum monument.
- ⊙ Set 2 1/2" x 30" aluminum monument at position specified in contract.
- () Record GLO information
- Wilderness boundary posted to standard
- F National Forest land
- FW National Forest Wilderness land

NOTE:
For monumentation information, see
monumentation sheets filed separately.



1 METER = 3.2808333 FEET

History of Surveys

The Range line between Township 8 South, Ranges 35 and 35 1/2 East of the Willamette Meridian was originally established by Eugene P. McCornack under GLO contract 398 dated July 2, 1881.

The South 1/4 corner and the Southeast section corner of Section 16 and the South 1/4 corner of Section 15 were originally established by W.B. Barr under GLO contract 492, dated August 22, 1883.

The Southwest corner of Section 16 was proportioned in from original GLO corner evidence by Duane I. Griffith, OPLS 644, in August 1987. See Grant County Survey No. 1019

SURVEYOR'S STATEMENT

I, Duane I. Griffith, Registered Land Surveyor in the State of Oregon, hereby certify that this plat and the notes hereon, or attached are a true representation of the survey I made in August, 1990, at the request of the USDA Forest Service in accordance with the statutes of the State of Oregon and with the articles of my contract.

I begin my survey at the Southwest corner of Section 16. I find this corner monument with a 2 1/2" aluminum monument set by me in August, 1987. I then run East along the South lines of Sections 15 and 16 and find original GLO survey evidence at the South 1/4 corner and the Southeast corner of Section 16 and the South 1/4 corner of Section 15 and set 2 1/2" x 30" aluminum monuments at these positions. I then placed a 2 1/2" x 30" aluminum monument on the South line of Section 15 at the head of Lucas Gulch.

Duane I. Griffith
Duane I. Griffith, OPLS 644
Baggett-Griffith and Associates
2006 Adams Avenue
LaGrande, OR 97850

August 23, 1990.

The information within these boxes is for U.S. Forest Service record keeping purposes only.

PROJECT NAME
1989 Wilderness
Boundary Survey

CONTRACT NUMBER
53-04RS-89-51

FIELD BOOKS
Traverse Book 2
(Lucas Gulch area)
Remonumentation Book 1

Examined and accepted for the U.S. Forest Service
this 10 day of SEPT, 1990.

Dennis L. Layford C.O.R.

I certify that this survey was performed at the request
of the Umatilla National Forest.

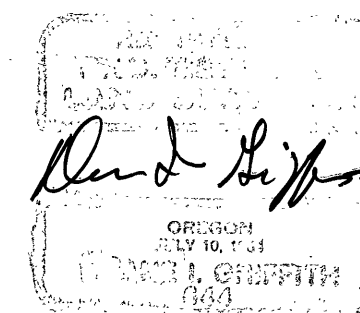
for NATIONAL FOREST SUPERVISOR

D. Stanley Cullimore

RECEIVED AND
FILED

SEP 27 1990

OFFICE OF COUNTY SURVEYOR
ASTORIA: *[Signature]*



BAGETT - GRIFFITH & ASSOCIATES LaGrande, Oregon		
Map of Survey Location of the National Forest Wilderness Boundary along the South line of Section 16 and part of the South line of Section 15, Township 8 South, Range 35 1/2 East of the Willamette Meridian. GRANT COUNTY, OREGON		
SURVEYED FOR	Umatilla National Forest	
SURVEYED BY	DIG	8-90
Scale: 1" = 600'	Drawn by: JPP	8-90