

EXAMINED AND APPROVED FOR THE U.S. FOREST SERVICE
THIS 17th DAY OF October, 1989.
J. E. Galt, COR
I CERTIFY THAT THIS SURVEY WAS PERFORMED AT THE
REQUEST OF THE MALHEUR NATIONAL FOREST SUPERVISOR.
Malheur National Forest
SIGNATURE DATE

NARRATIVE

The purpose of this survey is to mark boundary lines between National Forest land and privately owned land in and adjoining Section 36, T 10 S, R 33 E, W.M. This survey was performed at the request of the U.S.D.A., Forest Service, Malheur National Forest under Contract No. 53-04H1-7-4011, Sun Cadastral Survey.

History - The original subdivision of the township was completed 1881 by Robb & Graden under Contract No. 383. Section 36 was surveyed in 1967 by Duane Griffith, who remonumented the west quarter corner and established the CN1/16th corner (CS 63). A witness corner to the northwest corner of the section by Douglas Ferguson in 1980 (CS 624).

Survey - Basis of bearings is a solar observation taken at the CN1/16th corner of Section 2. A closed random traverse was run around a portion of the section as required for subdivision and posting, tying to the existing corners shown. The true position of the northwest section corner was calculated at record distance from the witness corner and using the calculated bearing of S0°04'31"E from CS 624 between the witness corner and the west quarter corner as the basis for the direction from the witness corner to the section corner.

Survey and subdivision of the section was conducted according to the original government notes and plat, and in accordance with the principles outlined in the Manual of Surveying Instructions, 1973.

A fence line runs along the general alignment of the west line and portions of the north line posted in this survey. No other obvious trespasses were noted.

Notes for this survey are contained in Field Book 8, Sun Cadastral Survey. Field notes and calculation sheets of this survey are on file in this office, and with the Survey Officer, Malheur National Forest.

General Notes - Equipment used - Topcon GTS-2. Aluminum monuments set in this survey consist of an aluminum cap with magnet, riveted to a 2-1/2" aluminum pipe 30" long with a flared base. Directions to bearing trees are based on a solar observation. All bearing trees marked in this survey have a 3/4" brass washer marked "PLS 1918" attached to the BT blaze. Measurements to all bearing trees were made to the center of the tree, unless noted. Bearing trees have blazes and bands painted red and appropriate Forest Service signs attached. Ponderosa pine is abbreviated P.Pine. Record bearing tree information is denoted by (). All corners set during this survey have a 6 foot steel guard post driven approximately 3 to 5 feet away with appropriate Forest Service signs attached. Boundary lines are marked with steel fence posts with property boundary signs.

Corner Notes

V-21
Found a 2-1/2" brass cap on an iron pipe in a mound of stone, set as witness corner. Cap is incompletely marked.

T10S R33E
S261S25
S31S3
V
440
1980
PLS 848

W-21
Set a 2-1/2x30" aluminum monument 16" in the ground in a mound of stone. A 5/8" iron rod with yellow plastic cap, markings illegible, bears N49°08'W, 8.16 ft, of unknown origin.
New bearing trees:
A 10" Fir bears N77°01'E 19.5 ft, scribed N1/16S36BT.
A 10" Fir bears N 70°37'W 10.5 ft, scribed N1/16S35BT.

T10S R33E
N1/16
S351S36
PLS1918
1989

W-23
Found a 3-1/4" brass cap on an iron pipe in a mound of stone.

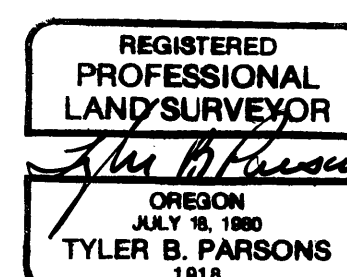
C
N1/161S36
C
1967
LS6440RE

X-21
Found a 3-1/4" brass cap on an iron pipe.
A 30" P.Pine bears S41°E 11.6 ft (S43°E 16 lks), scribed 1/4SBT.
A 30" P.Pine bears S36°12'W 8.6 ft (S35°W 8 lks), visible scribing.

T10S R33E
1/4
S351S36
1967
LS6440RE

Surveyor's Certificate

I, TYLER B. PARSONS, a Registered Land Surveyor in the State of Oregon, do hereby certify that this plat and the notes hereon or attached, are a correct representation of a survey I performed at the request of the U.S.D.A., Forest Service during the period August 17 to August 18, 1989, in accordance with the statutes of the State of Oregon and the articles of my contract.



RECEIVED AND
FILED

NOV 21 1989

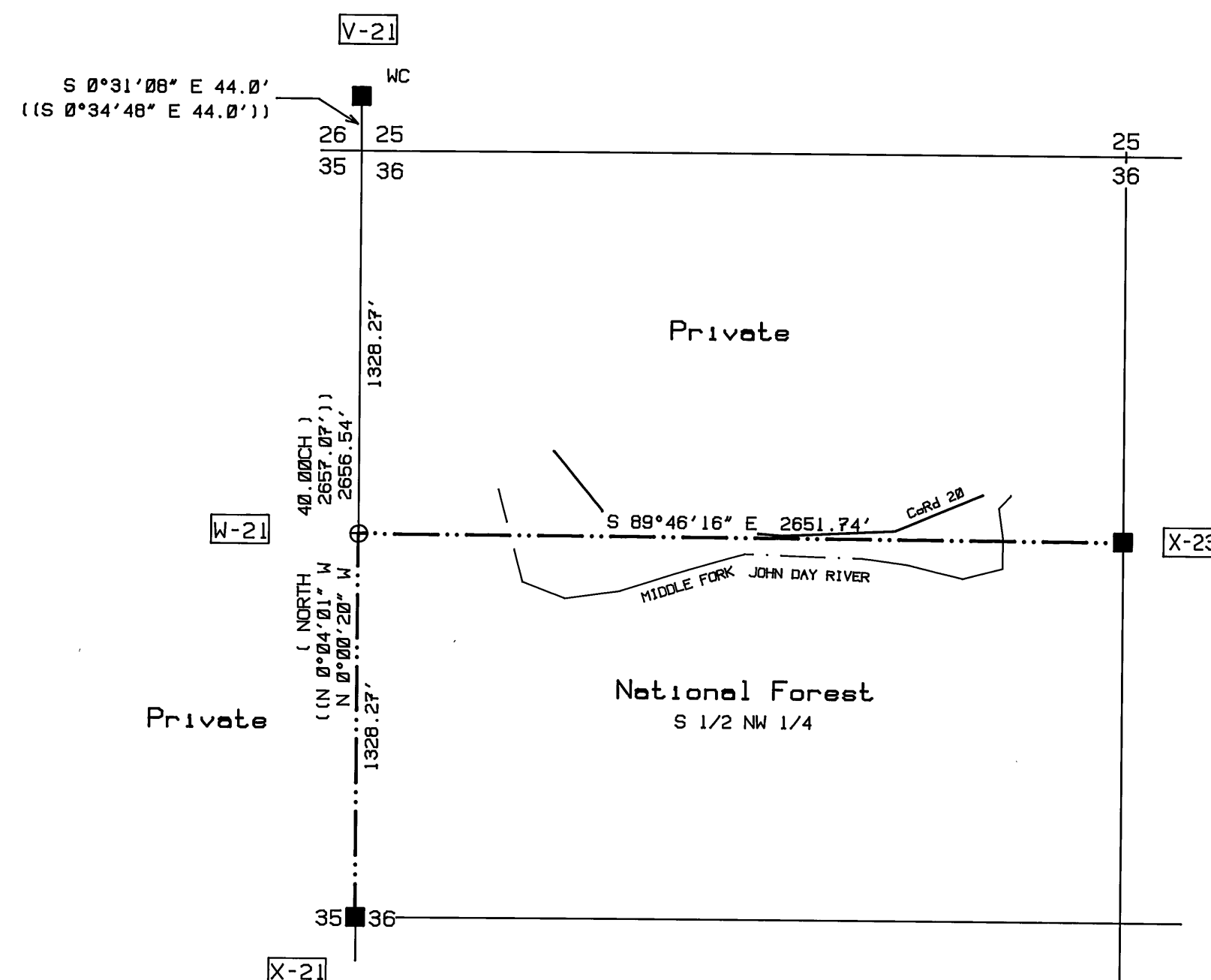
OFFICE OF COUNTY SURVEYOR
Attest: *[Signature]*

RECORD OF SURVEY for the U.S. FOREST SERVICE

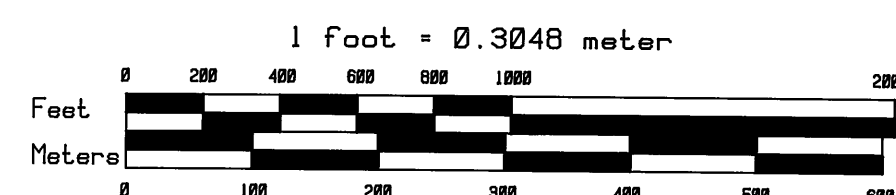
Malheur National Forest
NW1/4 Sec 36, T10S, R33E, W.M.
Grant County, OR
Sun Cadastral Survey
Cont. No. 53-04H1-7-4011
September 13, 1989

PARSONS SURVEYING
1915 S.E. Stone Street
Corvallis, OR 97333
(503) 752-7515
Job No. 8722N

CS 1108



Scale: 1 in. = 500 ft.



Legend

- Found aluminum or brass cap.
- Found corner. Set aluminum monument.
- Set 2-1/2x30" aluminum monument.
- () Record Information, GLO 1881.
- [] Record Information
- (()) Record Information, CS 624.
- Boundary line posted this contract.
- [C-15] Corner reference.