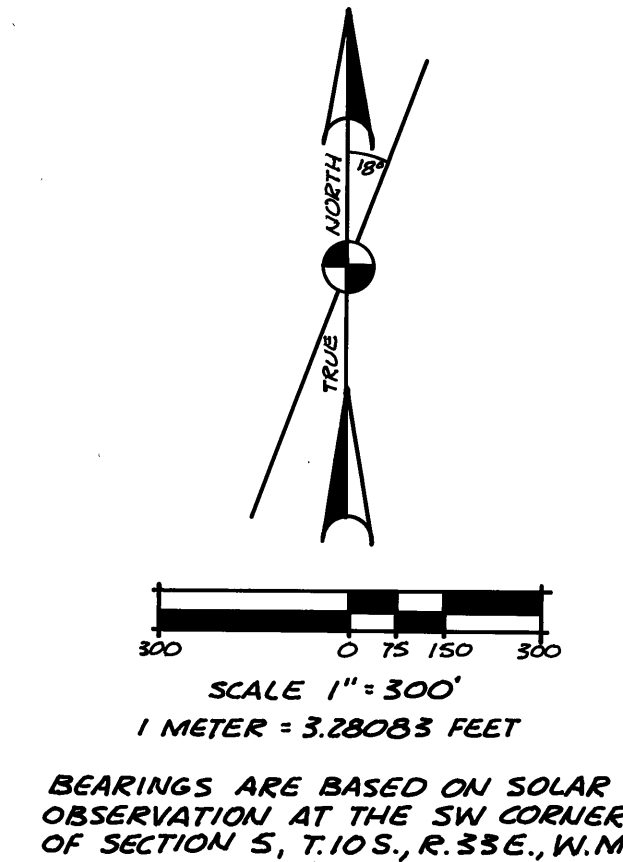
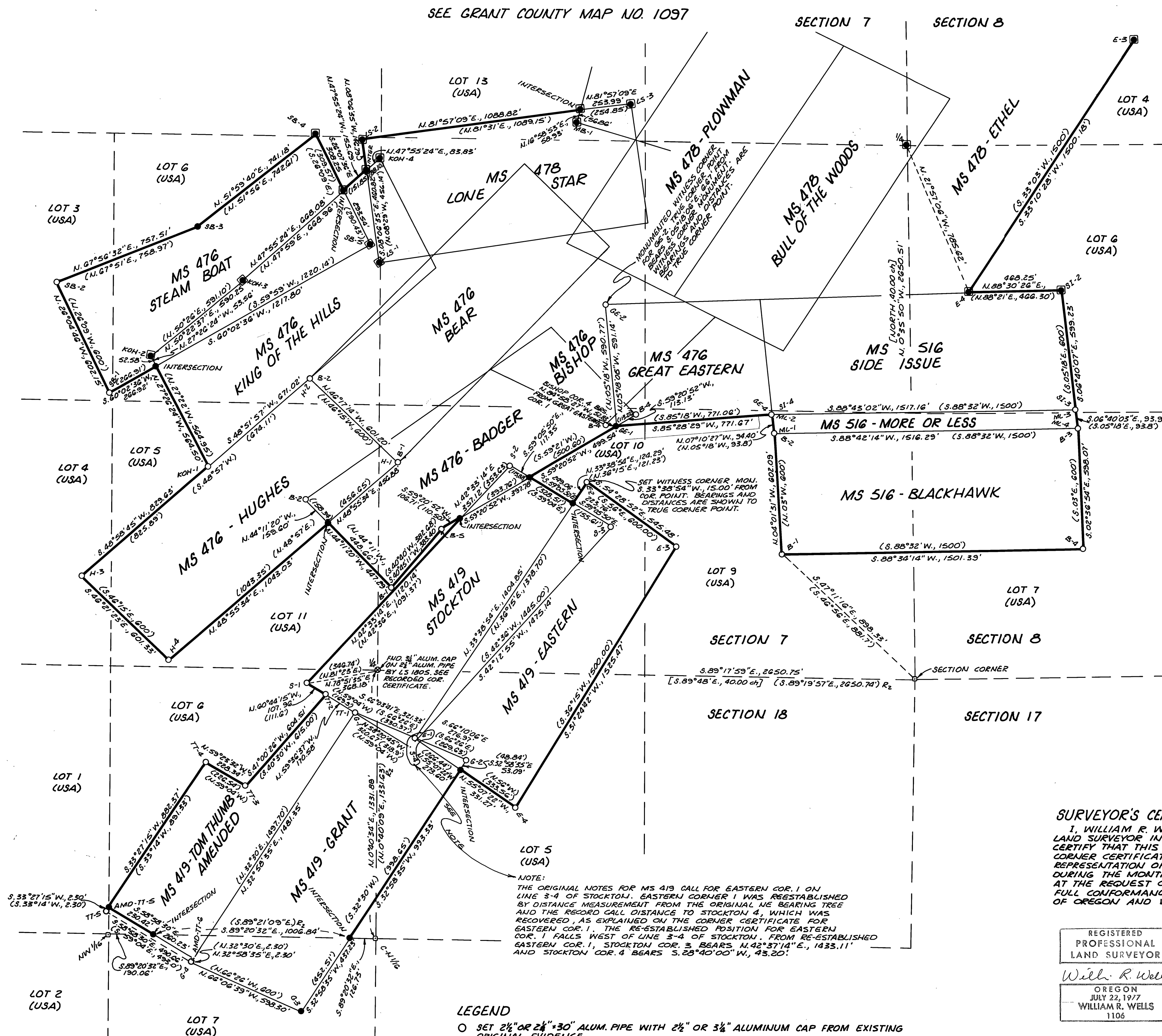


SEE GRANT COUNTY MAP NO. 1097

SECTION 7

SECTION 8



NARRATIVE OF SURVEY

THE PURPOSE OF THIS SURVEY WAS TO LOCATE AND POST THE BOUNDARY BETWEEN PRIVATE LANDS AND PUBLIC LANDS ADMINISTERED BY THE USDA - MALHEUR NATIONAL FOREST. ORIGINAL AND LINE INTERSECTION CORNERS MARKING THE EXTERIORS OF MS 419, 476, 478 AND 516 WERE REMONUMENTED OR ESTABLISHED AND MONUMENTED, AS SHOWN ON THIS PLAT. THE COMMON BOUNDARY WAS POSTED WITH 6-FOOT LONG STEEL OR WOOD POSTS WITH NATIONAL FOREST BOUNDARY SIGNS 5-4-2 ATTACHED.

IT SHOULD BE NOTED THAT SMALL PARCELS OF PUBLIC LAND MAY EXIST WITHIN THE EXTERIORS OF THE CLAIMS, A RESULT OF GAPS BETWEEN THE PATENTED CLAIMS. NO ATTEMPT WAS MADE DURING THIS SURVEY TO DETERMINE THE EXISTENCE OF THESE SMALL PARCELS OF PUBLIC LAND.

FIELD WORK WAS DONE WITH A 2-PERSON CREW USING 20-SECOND AND 6-SECOND THEODOLITES, AND INFRA-RED DISTANCE MEASURING INSTRUMENTS. AS INDICATED ON THIS PLAT, BEARINGS ARE BASED ON A SOLAR OBSERVATION TAKEN AT THE SOUTHWEST CORNER OF SECTION 5, T.10S., R.33E., W.1M.

IN THE SAME GENERAL AREA AS MS 476, MS 402 WAS PERFORMED IN JUNE, 1900, BY CHAS. M. FOSTER. THE CLAIM OWNERS, THE BADGER GOLD MINING AND MILLING CO., WERE NOT SATISFIED WITH MS 402 AND PETITIONED THE SURVEYOR GENERAL FOR A NEW SURVEY. THE NEW SURVEY WAS MS 476, AND PATENT WAS ISSUED, BASED ON MS 476 IN JUNE, 1904. MANY OF THE CORNER ACCESSORIES AND CORNERS OF MS 402 STILL EXIST AS OF THE DATE OF THIS SURVEY.

MS 419 WAS POORLY EXECUTED BY THE ORIGINAL SURVEYOR, WILLIAM F. WHITE. SIGNIFICANT BEARING AND DISTANCE DISCREPANCIES WERE NOTED. THERE IS NO RECORD OF SOME BEARING TREES RECOVERED WITH PROPER SCRIBING AND SOME OF THE RECOVERED BEARING TREES DO NOT MATCH CORNER EVIDENCE FOUND, OR EVEN FACE RECOVERED CORNERS. RECORD BEARING TREES ARE ABSENT AT SOME CORNERS, BUT IN OTHER CORNER AREAS, THERE ARE MORE THAN ONE SET OF BEARING TREES. FORTUNATELY, MOST CORNERS WERE WELL MARKED WITH STONE MOUNDS AND ONCE THE PROBLEMS WITH THE ACCESSORIES (BEARING TREES) WAS RECOGNIZED, MOST CORNERS WERE RECOVERED. THE CORNER CERTIFICATES, FILED SEPARATELY, EXPLAIN CONDITIONS FOUND AT EACH CORNER. PROBABLY, THE ORIGINAL MINERAL SURVEY WAS MADE AND THEN, BECAUSE OF LAYOUT OF SURVEY PROBLEMS, THE SURVEY WAS RETURNED FOR CORRECTION BY THE SURVEYOR GENERAL. THE CORRECTION SURVEY WAS PROBABLY DEFICIENT AND POORLY MADE, RESULTING IN THE CONFLICTING EVIDENCE FOUND TODAY. THE BLM CADASTRAL SURVEY RECORDS OFFICE IN PORTLAND, OREGON, WAS CONSULTED, WITHOUT SUCCESS, REGARDING THE EXISTENCE OF PRELIMINARY OR UNAPPROVED FIELD NOTES FOR MS 419.

THE METHOD OF CORNER RE-ESTABLISHMENT FOR KING OF THE HILLS CORNER 3, MS 476 AND LONE STAR CORNER 3, MS 476, ARE EXPLAINED ON GRANT COUNTY MAP NO. 1097, FILED SEPARATELY. GREAT EASTERN CORNER 1 AND STEAM BOAT CORNER 3, BOTH MS 476, AND GRANT CORNER 3, MS 419, WERE DECLARED LOST AFTER A DILIGENT SEARCH AND WERE RE-ESTABLISHED AS FOLLOWS:

STEAM BOAT CORNER 3:
RE-ESTABLISHED CORNER BY COMPASS RULE ADJUSTMENT METHOD BETWEEN RECOVERED STEAM BOAT CORNERS 2 AND 4, AFTER FIRST ROTATING RECORD CALCULATED BEARING BETWEEN CORNERS 2 AND 4 TO OBSERVED BEARING.

GREAT EASTERN CORNER 1:
RE-ESTABLISHED CORNER ON BADGER LINE 4-5 BY SINGLE PROPORTION MEASUREMENT BETWEEN RECOVERED BADGER CORNERS 4 AND 5.

GRANT CORNER 3:
RE-ESTABLISHED CORNER BY THE "PARALLEL LINES" METHOD AS EXPLAINED IN THE USDI-BLM MINERAL PROCEDURES GUIDE AND AS SHOWN ON THIS PLAT.

THIS SURVEY IS LOCATED IN SECTIONS 7, 8 AND 18, T.10S., R.33E., W.1M., GRANT COUNTY, OREGON.

HISTORY OF SURVEYS

THE SUBDIVISION OF T.10S., R.33E., W.1M. WAS PERFORMED BY ROBB AND GRADON, U.S. DEPUTY SURVEYORS, UNDER GLO CONTRACT NO. 383, DATED MARCH 26, 1891.

MS 419 WAS SURVEYED BY WILLIAM F. WHITE, U.S. DEPUTY MINERAL SURVEYOR, FROM MARCH 28 TO JUNE 28, 1902.

MS 476 WAS SURVEYED BY DAVID A. PORTER, U.S. DEPUTY MINERAL SURVEYOR, UNDER INSTRUCTIONS DATED JUNE 2, 1902.

MS 478 WAS SURVEYED BY DAVID A. PORTER, U.S. DEPUTY MINERAL SURVEYOR, UNDER INSTRUCTIONS DATED JUNE 20, 1902.

MS 479 WAS SURVEYED BY DAVID A. PORTER, U.S. DEPUTY MINERAL SURVEYOR, UNDER INSTRUCTIONS DATED JUNE 25, 1902.

MS 516 WAS SURVEYED BY HENRY J. JORY, U.S. DEPUTY MINERAL SURVEYOR, UNDER INSTRUCTIONS DATED JANUARY 5, 1903.

SECTION 18, T.10S., R.33E., W.1M. WAS SUBDIVIDED IN 1989, BY LS 1318. SEE GRANT COUNTY MAP NO. 1094.

NOTES

FOR ADDITIONAL INFORMATION ON CORNERS RE-ESTABLISHED AND REMONUMENTED, SEE CERTIFIED RECORD OF LAND CORNER MONUMENTATION FORMS FILED SEPARATELY.

FIELD BOOK REFERENCES: FIELD BOOKS 1, 2, 3 & 4, SUSANVILLE CADASTRAL SURVEY.

SURVEYOR'S CERTIFICATE

I, WILLIAM R. WELLS, A REGISTERED PROFESSIONAL LAND SURVEYOR IN THE STATE OF OREGON, DO HEREBY CERTIFY THAT THIS PLAT, AND THE ACCOMPANYING CORNER CERTIFICATES FILED SEPARATELY, ARE A CORRECT REPRESENTATION OF A SURVEY PERFORMED BY ME DURING THE MONTHS OF JULY THROUGH OCTOBER, 1989, AT THE REQUEST OF THE USDA - FOREST SERVICE, IN FULL CONFORMANCE WITH THE STATUTES OF THE STATE OF OREGON AND WITH THE ARTICLES OF MY CONTRACT.

REGISTERED
PROFESSIONAL
LAND SURVEYOR

WILLIAM R. WELLS
OREGON
JULY 22, 1977
WILLIAM R. WELLS
1106

WILLIAM R. WELLS
OREGON LICENSE NO. 1106

EXAMINED AND ACCEPTED FOR THE U.S. FOREST SERVICE THIS 1ST DAY OF February, 1990.
F. E. Calhoun, COR.

I CERTIFY THAT THIS SURVEY WAS PERFORMED AT THE REQUEST OF THE MALHEUR NATIONAL FOREST.

NATIONAL FOREST SUPERVISOR: *[Signature]*
SIGNATURE DATE

LEGEND

- SET 2 1/2" OR 2 3/4" ALUM. PIPE WITH 2 1/2" OR 3 1/4" ALUMINUM CAP FROM EXISTING ORIGINAL EVIDENCE.
- SET 2 1/2" OR 3" ALUMINUM PIPE WITH 2 1/2" OR 3 1/4" ALUMINUM CAP BY SURVEY.
- MONUMENT FROM SURVEY BY LS 1318. SEE GRANT COUNTY MAP NO. 1094 AND RECORDED CORNER CERTIFICATES.
- NATIONAL FOREST BOUNDARY POSTED THIS SURVEY.
- (xxx) RECORD BEARINGS AND DISTANCES FROM RECORD MINERAL SURVEYS.
- (xxx) RECORD BEARING AND DISTANCE FROM SURVEY BY ROBB AND GRADON, U.S. DEPUTY SURVEYORS, UNDER GLO SURVEY CONTRACT NO. 383.
- (xxx) RECORD BY LS 1318, GRANT COUNTY MAP NO. 1094.
- FOUND 2 1/2" ALUMINUM PIPE WITH 2 1/2" OR 3 1/4" ALUMINUM CAP. SEE GRANT COUNTY MAP NO. 1097 AND RECORDED CORNER CERTIFICATES.

RECORD OF SURVEY PLAT SUSANVILLE CADASTRAL SURVEY

U.S.D.A.-FOREST SERVICE CONTRACT NO. 53-04KK-9-02423

MS 419, 476, 478 & 516

LOCATED IN SECTIONS 7, 8 & 18, T.10S., R.33E., W.1M.

ALL IN GRANT COUNTY, OREGON

SURVEYED BY: WILLIAM R. WELLS
P.O. BOX 1696
PENDLETON, OREGON 97801
PHONE (503) 276-6362

SURVEYED: JULY - OCTOBER, 1989

RECEIVED AND
FILED

MAR 29 1990

CLERK OF COUNTY SURVEYOR