

NARRATIVE: This survey was performed at the request of and under contract with the U.S.D.A. Farmers Home Administration. The purpose of this survey was to locate two Conservation Easements along the north bank of the North Fork of the John Day River, as shown hereon. The contract required that the East 1/2 line and the West 1/2 line of section 15 be determined in this survey. This involved a retracement of the exterior boundary lines of section 15 to recover the controlling section corners.

A search was made of the available records pertaining to this survey. Field measurements were made to locate existing monuments and corner evidence. County Surveyor brass cap monuments were set at the section corners from found acceptable corner evidence as hereinafter discussed. New monuments were set at the 1/4 corners at proportionate measure between the appropriate section corners. New monuments were set along the northerly, easterly, and westerly boundaries of the Conservation Easements at points selected and approved by Billy Clonts, Contracting Officers' Representative.

My research disclosed that the State Highway Dept., during their location of the Kimberly - Monument Highway, had found corner evidence at the NW, SW, and SE corners of section 15. During a survey performed in 1969 by this firm, the NW corner of section 15 was found as shown on Map of Survey No. 159, using this information along with the ties given by the State Highway Dept. as shown on Drawing No. 58-25-17 we were able to locate the SE corner of section 15. The SW corner of section 15 falls in a field and has been destroyed. The corner position is not lost however, due to the tie by the State Highway Dept. The position of this corner was verified by land owner Tom Campbell and by the elevation of the corner as shown on the 1953 USGS Kimberly Quadrangle Map. The elevation between USGS triangulation station NORTH and the SW corner position of section 15 checked within 2 feet. Land owner Tom Campbell told me he had this area of the field shaped for sprinkler irrigation and that a couple feet of fill was about right. This was verified when we dug the hole to set the brass capped iron pipe for this corner. I found and accepted a marked stone at the NE corner of the section.

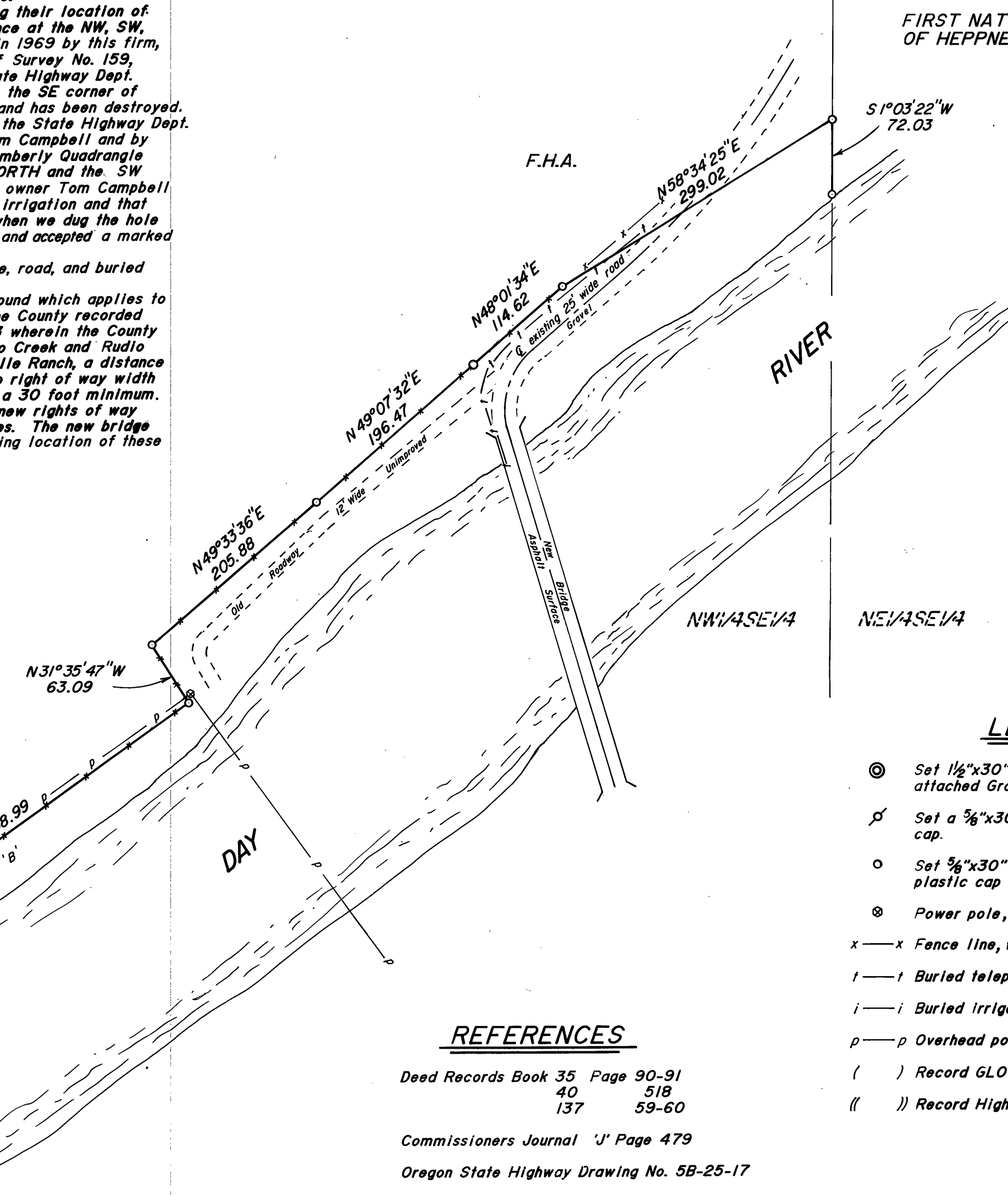
I found no easements of record for the overhead power line, road, and buried telephone line as shown hereon.

The only recorded reference to County Road No. 1 that I found which applies to the Conservation Easement is the assertion of claim by the County recorded in Commissioners Journal J, Page 479, dated Oct. 6, 1943 wherein the County Court passed a resolution declaring "that portion of Rudia Creek and Rudia Road from the Secondary Highway to the John Cummingsville Ranch, a distance of approximately 3 miles be declared a County Road." No right of way width was specified. The right of way width may be subject to a 30 foot minimum. I found no record of abandonment of this old road or any new rights of way acquired by the county for the new bridge or its approaches. The new bridge was constructed in about 1966. We have shown the existing location of these roads hereon.

BASIS OF BEARINGS

The forward bearing from USGS Δ NORTH to Δ North Azimuth Mark, published as N72°27'20"E, 1927 datum.

FIRST NATIONAL BANK OF HEPPNER, OR.



LEGEND

- ⊙ Set 1/2"x30" galvanized iron pipe with attached Grant County Surveyor Brass Cap.
- ⊕ Set a 3/8"x30" iron pin with attached alum. cap.
- Set 5/8"x30" iron pin with attached yellow plastic cap marked BGA SURVEY MARKER.
- ⊗ Power pole, wood poles.
- x — x Fence line, wood posts & barbed wire
- t — t Buried telephone line, approx. location.
- i — i Buried irrigation mainline.
- p — p Overhead power line
- () Record GLO bearing and distance
- (()) Record Highway Dept. bearing and distance

REFERENCES

Deed Records Book 35 Page 90-91
40 518
137 59-60

Commissioners Journal 'J' Page 479

Oregon State Highway Drawing No. 58-25-17

GLO notes

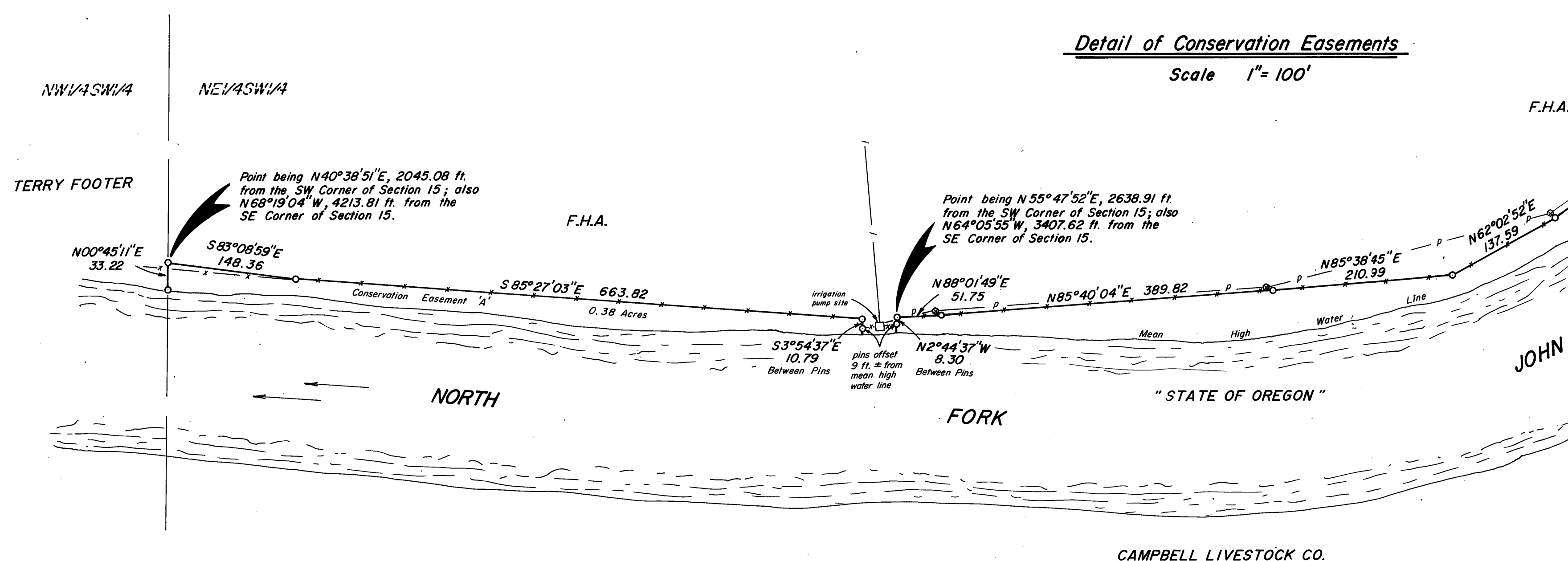
See record corner restoration sheets for information on corner evidence found, type of monument set, and corner accessory details.

BAGETT - GRIFFITH & ASSOCIATES John Day, Oregon			
CONSERVATION EASEMENT MAP SITUATED IN THE NW1/4SE1/4 & NE1/4SW1/4 OF SECTION 15, T9S, R26E, W.M.			
GRANT COUNTY, OREGON			
SURVEYED FOR	FARMERS HOME ADMINISTRATION		
SURVEYED BY	R.D.B. & J.L.W. & K.J.W.		
Scale: As Shown	Drawn by:	J.L.W.	3/23/89 4/14/89
			4/18/89

RECORD MAP OF SURVEY NO. 1074

Detail of Conservation Easements

Scale 1" = 100'



CAMPBELL LIVESTOCK CO.