

National Forest Lands

All land surrounding Section Seventeen

SURVEYOR'S FILING STATEMENT

I, Duane I. Griffith, Registered Land Surveyor in the State of Oregon, hereby certify this is the complete map of survey of the area shown and replaces map of survey number 1010 recorded in July, 1987, which was incomplete. See accompanying letter to the Grant County Surveyor for explanation.

Duane I. Griffith
Duane I. Griffith, OPLS 644
January 13, 1988

Surveyor's Statement

I, Duane I. Griffith, Registered Land Surveyor in the State of Oregon, hereby certify that this plat and the notes hereon, or attached, are a true and correct representation of the survey I made in May and June, 1985, and completed in June, 1986, at the request of the USDA Forest Service, in accordance with the statutes of the State of Oregon and with the articles of my contract. The delay was due to corrections required on survey number 724, resulting in a movement of the proportioned corner to Sections 5, 6, 7 and 8. This is shown on survey number 879. I then traversed to the said monument, where I found the original corner stone set by Lackland, as shown on the annexed plat. I then returned to the West 1/4 corner position to search, but I could find no evidence of the original GLO corner. This area has been greatly disrupted by logging operations. I then searched for the Northwest corner of Section 17 and found the original corner stone. The Southeast corner of Section 17 is on the edge of a meadow. There has been a great deal of damage to the original conditions. I did not find this corner and therefore monumented by proportion as shown. The West 1/4 corner of Section 17 is in an area which has been logged. I found what could be the stone, however it was loose on the ground in an area where logs had been skidded. I therefore proportioned this corner as shown. I find no other unusual conditions on this survey.

Duane I. Griffith
Duane I. Griffith, OPLS 644
Baggett - Griffith and Associates
2006 Adams Avenue
La Grande, Oregon 97850

June 11, 1986

History of Surveys

The exterior and subdivisional corners of Township 12 South, Range 30 East, W.M. were originally established by Samuel W. Lackland under GLO contract number 415, dated August 19, 1881.

The North and West 1/4 corners of Section 21 were remonumented by Grant County survey number 785, done by Douglas M. Ferguson.

The Northeast and Southwest corners of Section 17 were remonumented in 1981 from original GLO corner evidence by Howard L. Perry.

The Northwest corner of Section 8 was monumented by proportion on survey number 724 and reset by proportion on survey number 879, both by Howard L. Perry.

BASIS OF BEARING

P.M. Solar observation taken at a point 13 feet South and 860 feet West of the Northeast corner of Section 17, Township 12 South, Range 30 East of the Willamette Meridian (hour angle method)

Date May 27, 1985
Latitude 44° 32' 00"
Longitude 119° 07' 33"
Time 23:55:55 (GCT)
Magnetic declination 20° East

LEGEND

- Found original GLO survey corner evidence and set 2 1/2" x 30" aluminum monument
- Set 2 1/2" x 30" aluminum monument at proportionate position
- Found corner monument set by others (see history of surveys and corner remonumentation sheets filed separately)
- SFNF Corner searched for but not found
- () Original GLO survey record bearing and distance
- Posted National Forest Boundary line
- NF National Forest lands
- P Privately owned lands

NOTE:

For monumentation information, see monumentation sheets filed separately

REGISTERED
PROFESSIONAL
LAND SURVEYOR

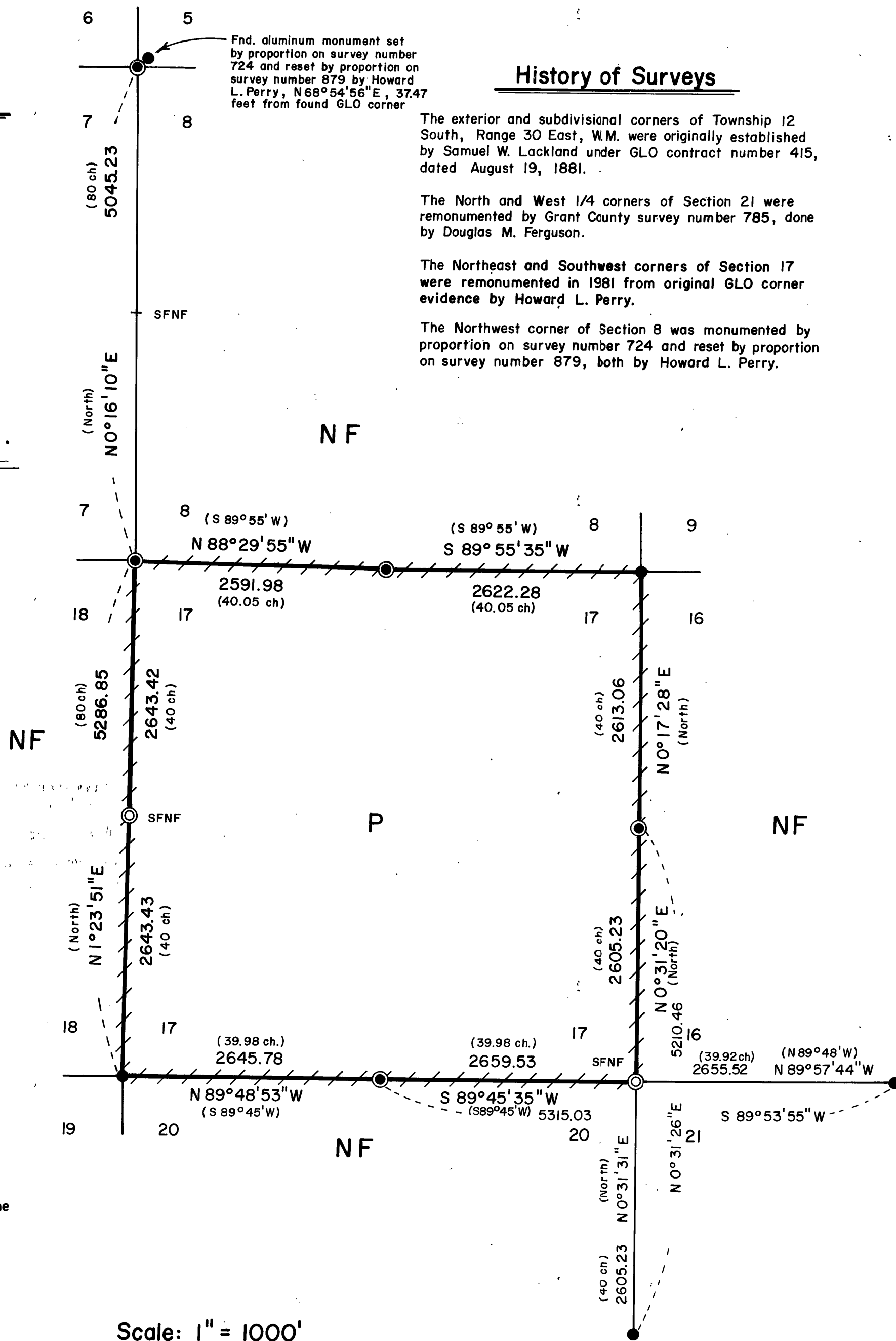
OREGON
JULY 10, 1984
DUANE I. GRIFFITH
644

BAGETT - GRIFFITH & ASSOCIATES
La Grande, Oregon
Map of Survey

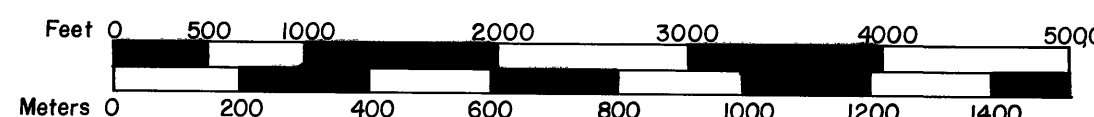
Location of the exterior lines of Section 17,
Township 12 South, Range 30 East, W.M.

GRANT COUNTY, OREGON

SURVEYED FOR	Malheur National Forest
SURVEYED BY	d.i.g. 5/86/85 and 6/86
Scale: 1" = 1000'	Drawn by: r.g.r. 6/85 and 6/86



Scale: 1" = 1000'



1 Meter = 3.2808333 Feet

RECEIVED AND
FILED

JAN 19 1986

OFFICE OF THE CLERK OF THE
GRANT COUNTY, OREGON