

National Forest Lands

All land surrounding Section Seventeen

HISTORY OF SURVEYS

The exterior and subdivisional corners of Township 12 South, Range 30 East of the Willamette Meridian, were originally established by Samuel W. Lackland under GLO contract number 415, dated August 19, 1881.

The North and West 1/4 corners of Section 21 were remonumented by Grant County survey number 785, done by Douglas M. Ferguson.

The Northeast and Southwest corners of Section 17 were remonumented from original GLO corner evidence by Howard L. Perry.

BASIS OF BEARING

P.M. Solar observation taken at a point 13 feet South and 860 feet West of the Northeast corner of Section 17, Township 12 South, Range 30 East of the Willamette Meridian (Hour angle method)

Date May 27, 1985
Latitude 44°32'00"
Longitude 119°07'33"
Time 23:55:55 (GCT)
Magnetic declination 20° East

LEGEND

- Found original GLO survey corner evidence and set a 2 1/2" x 30" aluminum monument
- Set 2 1/2" x 30" aluminum monument at position determined by survey
- Found corner monument set by others (see history of surveys and corner monumentation sheets filed separately)
- SFNF Corner searched for but not found
- () Original GLO survey record bearing and distance
- Posted National Forest Boundary line
- NF National Forest lands
- P Privately owned lands

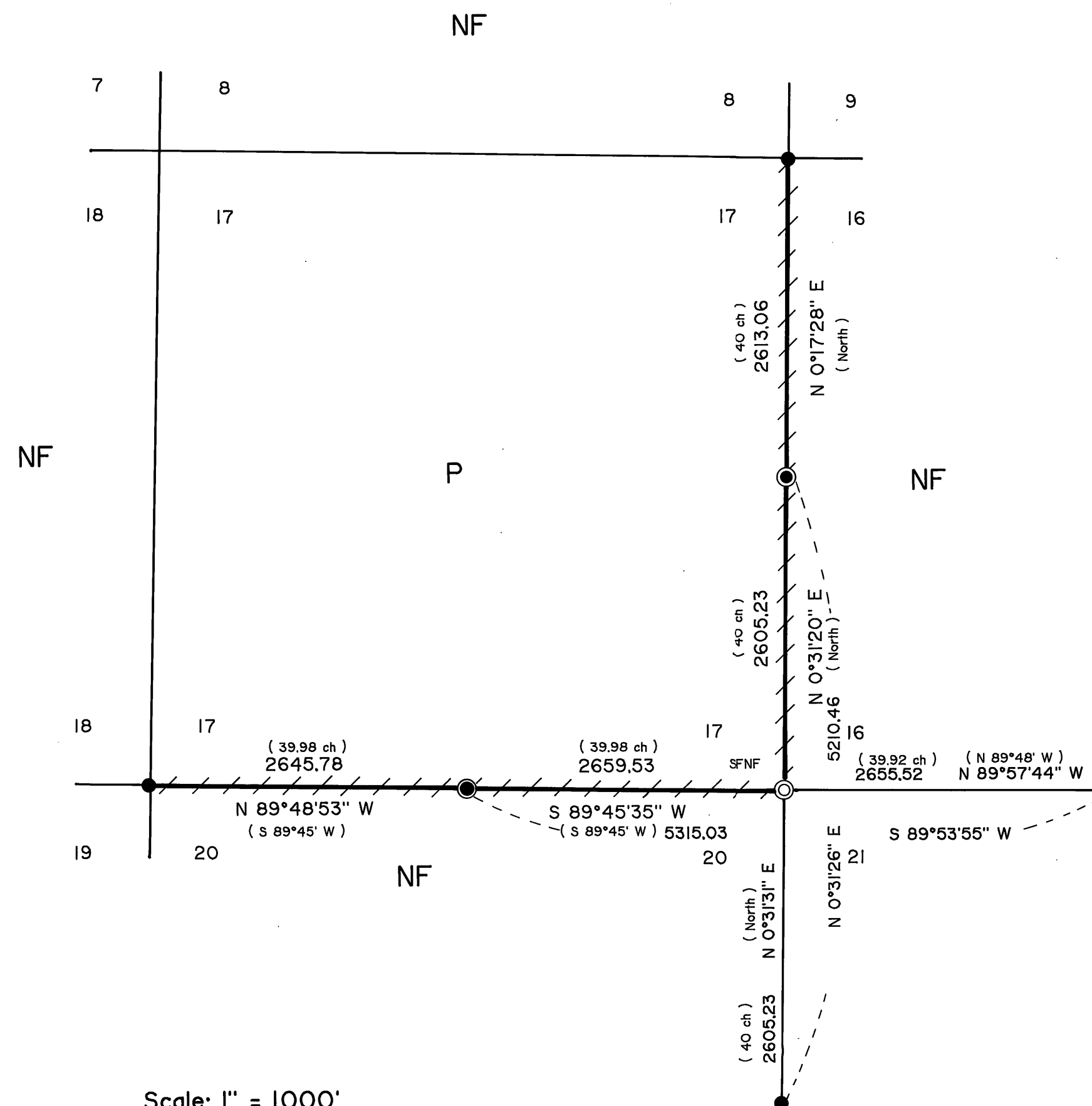
NOTE:

For monumentation information, see monumentation sheets filed separately.

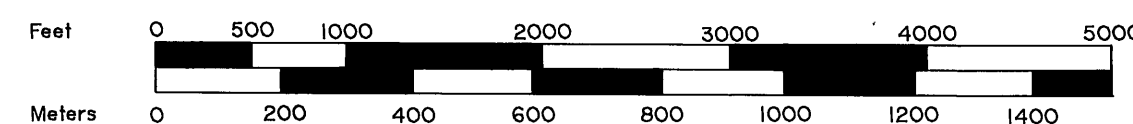
Surveyor's Statement

I, Duane I. Griffith, Registered Land Surveyor in the State of Oregon, hereby certify that this plat and the notes hereon, or attached, are a true and correct representation of the survey I made in May and June, 1985, at the request of the USDA Forest Service, in accordance with the statutes of the State of Oregon and with the articles of my contract. The Southeast corner of Section 17 is on the edge of a meadow. There has been a great deal of damage to the original conditions. I did not find this corner and therefore monumented by proportion as shown. I find no other unusual conditions on this survey.

Duane I. Griffith
Duane I. Griffith, OPLS 644
Bagett, Griffith and Associates
2006 Adams Avenue
La Grande, Oregon 97850
July 11, 1987



Scale: 1" = 1000'



1 Meter = 3.2808333 Feet

RECEIVED AND
FILED

OCT 2 1987

OFFICE OF COUNTY SURVEYOR
Attest: *Robert A. Baggett*

REGISTERED
PROFESSIONAL
LAND SURVEYOR

Duane I. Griffith
OREGON
JULY 10, 1964
DUANE I. GRIFFITH
644

BAGETT - GRIFFITH & ASSOCIATES La Grande, Oregon		
Map of Survey		
Location of the East and South lines of Section 17, Township 12 South, Range 30 East of the Willamette Meridian.		
GRANT COUNTY, OREGON		
SURVEYED FOR	Malheur National Forest	
SURVEYED BY	d.i.g.	5 and 6-85
Scale: 1" = 1000'	Drawn by: R.G.R.	7-87

MAP OF SURVEY NO. 1010 See MOS 1027