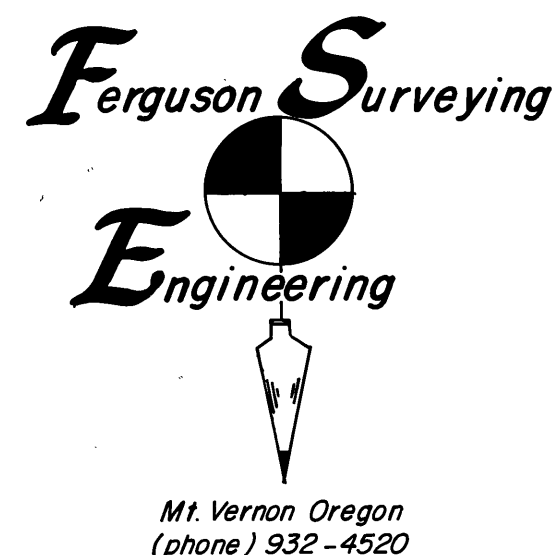


**Subdivision of Sec.9, Retracement of Line Between Section 17/16 & Retracement of Exterior Boundaries of Section 21, T14S R35E W.M. Grant County Oregon. June, July, & Aug. 1987**

FOR: U.S.D.A. Forest Service  
BY: Douglas M. Ferguson, Ken Delano, & D. Mitchell Ferguson  
DRAWN BY: Malice Ferguson Wood



Mt. Vernon Oregon  
(phone) 932-4520

**PORTION OF BOGUE CADASTRAL SURVEY**

**NARRATIVE**

This Survey is performed under contract for the Malheur National Forest, the purpose of which is the establishment and marking of the Forest Boundary, as shown on this Map.

The boundaries of Section 9 are retraced and all the corners are recovered. That Section is then subdivided as required and shown on the map in a routine manner. The line between Sections 17/16 is then retraced and the corners of that line are recovered, thus allowing the marking of the Forest boundary along that line. The boundaries of Section 21 are then retraced and all the original corners except the Northwest Section Corner are recovered. A retracement is then continued West and the 1/4 Corner between Sections 17/20 is recovered thus allowing the lost corner to Sections 16/17/20/21 to be established at proportionate measure between corners previously recovered 1/2 mile in each cardinal direction. The exterior boundary of section 21 is then marked as required. The original Survey was found accurately surveyed and well marked, particularly considering the rough steep terrain.

The "CERTIFIED RECORD OF LAND CORNER - MONUMENTATION" forms as referenced to this Map and the notes shown on the Map should be considered a substantial part of this "NARRATIVE", as they contain the detailed information as to the evaluation of evidence found and monumentation work performed.

Positional control for this survey is provided by a closed traverse network. LIETZ SDM 3E. Electronic tachometer is used to obtain the measurements and HP-868 computer system is used to perform the computations. Field Notes and computations are on file in the office of "FERGUSON SURVEYING & ENGINEERING", Mt. Vernon Oregon.

I, Douglas M. Ferguson, Registered Professional Land Surveyor, in the State of Oregon, hereby certify that this plot, notes and records hereon or referenced are a correct representation of the survey I performed during June, July and Aug., of 1987 for the U.S. Forest Service, in accordance with the statutes of the State of Oregon and the articles of my contract, No. 53-04H1-6-0094N

Douglas M. Ferguson, Or. PLS 848.

**HISTORY**

The Subdivision of T. 14S, R. 35E, was originally surveyed by George R. Campbell, in 1901, under General Land Office Contract No. 724. There is no other survey work shown, of record in the Grant County Surveyors Office which is pertinent to this Survey.

**MONUMENTATION**

See standard U.S.F.S. "INDEX No.", in circle, on the Map Rty. Monuments are stamped & Bearing Trees or other Accessories are taken as shown below. Nailed Bearing Tree signs above scribing blaze, warning signs on back and brass washers stamped "PLS 848" above BT scribe on each tree. Set steel post with warning and/or boundary signs, on the property line, approx. 5ft. each way from Property Corners. Set steel posts with warning sign within 5ft., in a cardinal direction from each Controlling Corner. See "CERTIFIED RECORD OF LAND CORNER MONUMENTATION" forms as referenced to this Map of Survey "No. 1009" and on file in office of the Grant County Surveyor, for complete description of History, Evidence, Monument & Accessories.

T14S R35E Pine 6" dia, Bears N65°W, 50.4ft., scribed: T14S R35E S4 BT  
S4153  
S8150 Pine 8" dia, Bears N 7°E, 44.1ft., " T14S R35E S3 BT  
1987 Pine 8" dia, Bears S79°E, 32.7ft., " T14S R35E S10 BT  
RLS 848 Pine 28" dia, Bears S34°W, 40.0ft., " T14S R35E S9 BT

T14S R35E Fir 10" dia, Bears N 6°46'E, 195.2ft., scribed: 1/4 S4 BT  
S4153  
S8150 Fir 10" dia, Bears S 0°31'E, 169.5ft., " 1/4 S9 BT  
1987 RLS 848

T14S R35E Fir 10" dia, Bears N49°W, 39.7ft., scribed: T14S R35E S5 BT  
S4153  
S8150 Fir 12" dia, Bears N30°E, 9.7ft., " T14S R35E S4 BT  
1987 Fir 14" dia, Bears S69°E, 38.0ft., " T14S R35E S9 BT  
RLS 848 Fir 14" dia, Bears S32°W, 20.3ft., " T14S R35E S8 BT

T14S R35E Fir 14" dia, Bears N40°W, 35.2ft., scribed: 1/4 S8 BT  
S4153  
S8150 Fir 14" dia, Bears N23°E, 32.4ft., " 1/4 S9 BT  
1987 RLS 848

T14S R35E Spruce 10" dia, Bears N 6°E, 12.3ft., scribed: C/4 S9 BT  
S4153  
S8150 Fir 14" dia, Bears S51°E, 33.0ft., " C/4 S9 BT  
1987 RLS 848

T14S R35E Fir 18" dia, Bears S20°E, 222ft., scribed: 1/4 S10 BT  
S4153  
S8150 Fir 20" dia, Bears N59°W, 20.7ft., " 1/4 S9 BT  
1987 RLS 848

T14S R35E Fir 14" dia, Bears N85°W, 43.8ft., scribed: SE 1/6 S9 BT  
S4153  
S8150 Fir 10" dia, Bears N84°E, 34.8ft., " SE 1/6 S9 BT  
1987 RLS 848

T14S R35E Fir 22" dia, Bears N46°W, 36.5ft., scribed: C-S 1/6 S9 BT  
S4153  
S8150 Fir 12" dia, Bears S30°E, 15.4ft., " C-S 1/6 S9 BT  
1987 RLS 848

T14S R35E Fir 14" dia, Bears N67°W, 11.3ft., scribed: T14S R35E S8 BT  
S4153  
S8150 Fir 14" dia, Bears N43°E, 30.5ft., " T14S R35E S9 BT  
1987 Fir 10" dia, Bears S40°E, 21.5ft., " T14S R35E S16 BT  
RLS 848 Fir 6" dia, Bears S17°W, 39ft., " T14S R35E S17 BT

T14S R35E Fir 8" dia, Bears S13°W, 7.9ft., scribed: 1/4 S16 BT  
S4153  
S8150 Fir 16" dia, Bears N 7°E, 20.8ft., " 1/4 S9 BT  
1987 RLS 848

T14S R35E Fir 8" dia, Bears N53°E, 26.6ft., scribed: E1/6 S9 BT  
S4153  
S8150 Fir 8" dia, Bears S 2°W, 20.2ft., " E1/6 S16 BT  
1987 RLS 848

T14S R35E Fir 12" dia, Bears N44°W, 22.8ft., scribed: T14S R35E S9 BT  
S4153  
S8150 Fir 8" dia, Bears N59°E, 14.7ft., " T14S R35E S10 BT  
1987 Fir 6" dia, Bears S16°E, 35.0ft., " T14S R35E S15 BT  
RLS 848 Fir 12" dia, Bears S32°W, 15.8ft., " T14S R35E S16 BT

T14S R35E Fir 12" dia, Bears N77°E, 17.0ft., scribed: 1/4 S16 BT  
S4153  
S8150 Fir 15" dia, Bears S33°W, 53.3ft., " 1/4 S17 BT  
1987 RLS 848

T14S R35E Fir 8" dia, Bears N33°E, 33.8ft., scribed: 1/4 S17 BT  
S4153  
S8150 Fir 6" dia, Bears S 7°W, 26.8ft., " 1/4 S20 BT  
1987 RLS 848

T14S R35E Set 5/8" iron pins with plastic cap stamped SURVEY MARKER  
S4153  
S8150 PLS 848 and steel guard post with Bearing Tree and Warning, as  
1987 follows: N45°W, 10.0ft., N45°E, 10.0ft., S45°E, 10.0ft., and  
RLS 848 S45°W, 10.0ft. from corner.

T14S R35E (NEW BEARING TREES)  
S4153  
S8150 Pine 8" dia, Bears N42°E, 14.9ft., scribed: 1/4 S16 BT  
1987 Pine 8" dia, Bears S46°E, 36.3ft., " 1/4 S21 BT  
RLS 848

T14S R35E (NEW BEARING TREES)  
S4153  
S8150 Pine 8" dia, Bears N52°W, 32.4ft., scribed: T14S R35E S16 BT  
1987 Pine 10" dia, Bears N65°E, 20.6ft., " T14S R35E S15 BT  
RLS 848 Fir 8" dia, Bears S54°E, 19.5ft., " T14S R35E S22 BT  
Pine 8" dia, Bears S79°W, 35.3ft., " T14S R35E S21 BT

T14S R35E Fir 16" dia, Bears S52°W, 3.7ft., scribed: 1/4 S21 BT  
S4153  
S8150 Fir 14" dia, Bears N4°E, 18.2ft., " 1/4 S22 BT  
1987 RLS 848

T14S R35E Pine 10" dia, Bears S86°W, 44.0ft., scribed: 1/4 S20 BT  
S4153  
S8150 Fir 8" dia, Bears N66°E, 7.5ft., " 1/4 S21 BT  
1987 RLS 848

T14S R35E Fir 8" dia, Bears N34°W, 17.8ft., scribed: T14S R35E S20 BT  
S4153  
S8150 Fir 10" dia, Bears N6°E, 27.7ft., " T14S R35E S21 BT  
1987 Fir 12" dia, Bears S2°E, 29.3ft., " T14S R35E S28 BT  
RLS 848 Fir 14" dia, Bears S82°W, 26.8ft., " T14S R35E S29 BT

T14S R35E Fir 12" dia, Bears S74°W, 3.8ft., scribed: 1/4 S28 BT  
S4153  
S8150 Fir 8" dia, Bears N35°E, 27.2ft., " 1/4 S21 BT  
1987 RLS 848

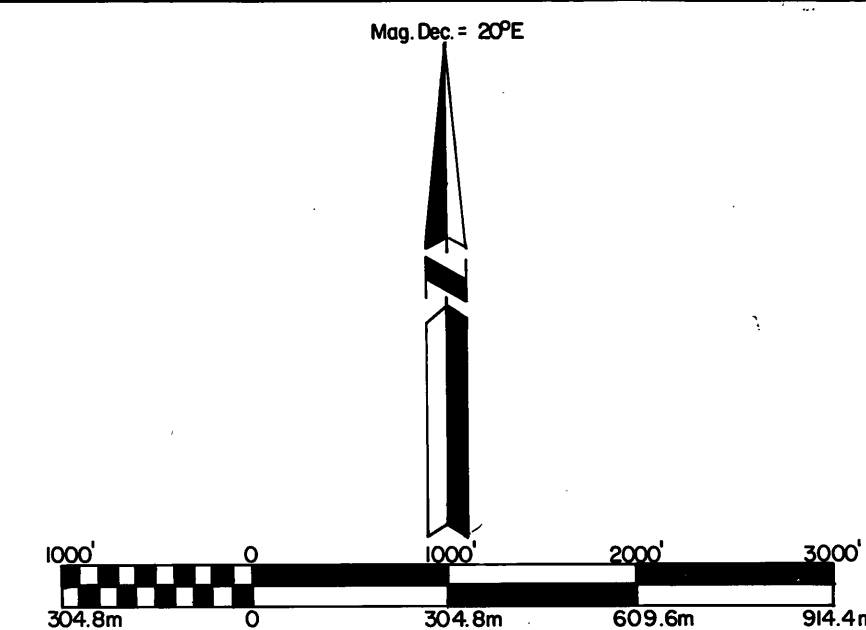
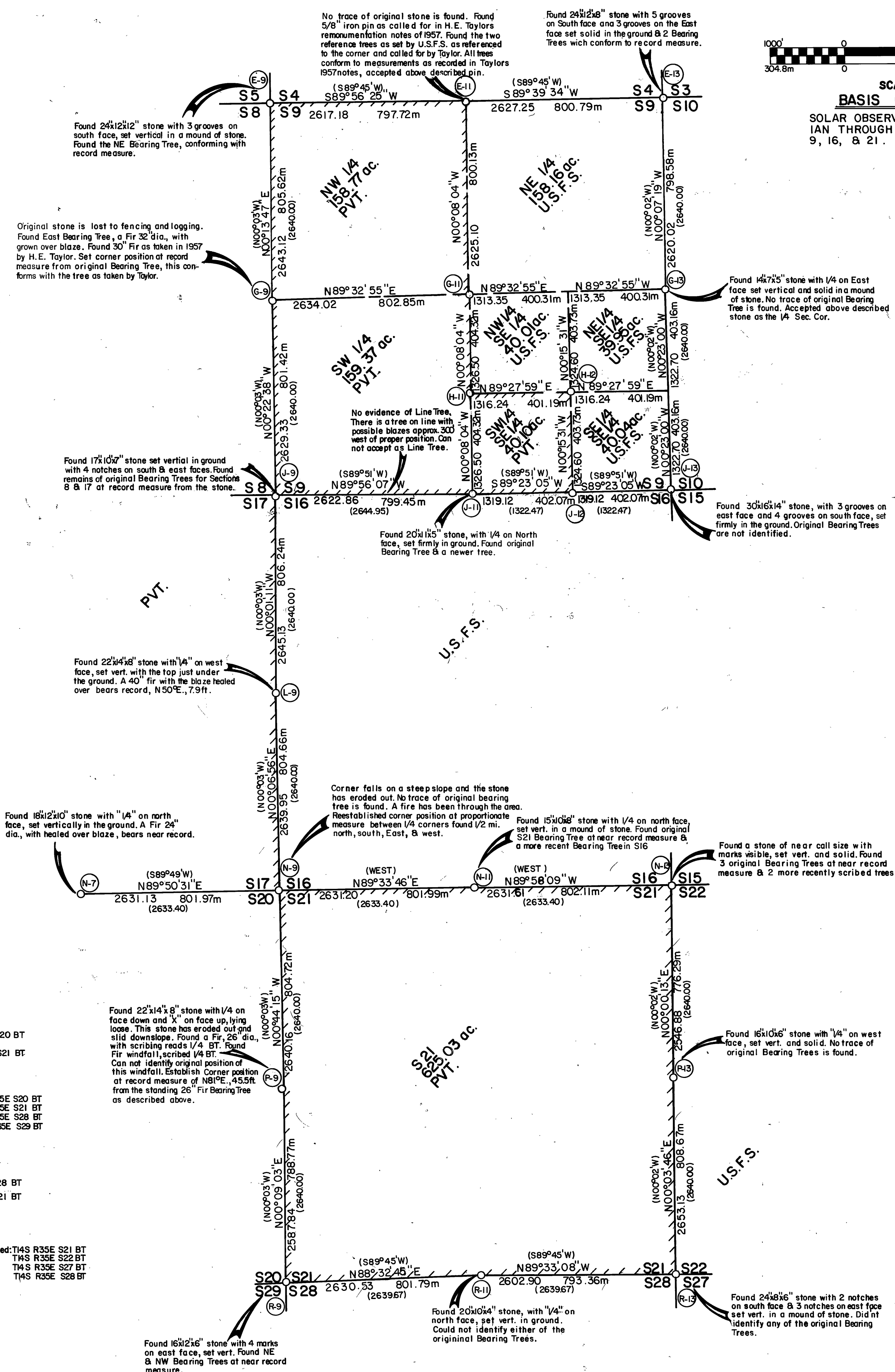
T14S R35E Lodge Pole Pine 10" dia, Bears N16°W, 28.1ft., scribed: T14S R35E S21 BT  
S4153  
S8150 Lodge Pole Pine 10" dia, Bears N62°E, 21.0ft., " T14S R35E S22 BT  
1987 Lodge Pole Pine 10" dia, Bears S28°E, 22.2ft., " T14S R35E S27 BT  
RLS 848 Lodge Pole Pine 10" dia, Bears S43°W, 17.0ft., " T14S R35E S28 BT

T14S R35E (NEW BEARING TREES)  
S4153  
S8150 Pine 8" dia, Bears N52°W, 32.4ft., scribed: T14S R35E S16 BT  
1987 Pine 10" dia, Bears N65°E, 20.6ft., " T14S R35E S15 BT  
RLS 848 Fir 8" dia, Bears S54°E, 19.5ft., " T14S R35E S22 BT  
Pine 8" dia, Bears S79°W, 35.3ft., " T14S R35E S21 BT

T14S R35E Fir 16" dia, Bears S52°W, 3.7ft., scribed: 1/4 S21 BT  
S4153  
S8150 Fir 14" dia, Bears N4°E, 18.2ft., " 1/4 S22 BT  
1987 RLS 848

**LEGEND**

- Set aluminum pipe with 3/2" aluminum cap stamped as shown on the map below.
- ( ) Record bearing or distance as reported by George R. Campbell, the original G.L.O. surveyor.
- ||||| Property line posted with metal post & boundary signs at max. intervals of 250'.



**BASIS OF BEARINGS**  
SOLAR OBSERVATION, WITH TRUE MERIDIAN THROUGH CENTER LINE OF SECTIONS 9, 16, & 21.

RECEIVED AND FILED

NOV 6 1987

OFF. OF COUNTY SURVEYOR

Robert D. Ferguson

REGISTERED PROFESSIONAL LAND SURVEYOR  
DOUGLAS M. FERGUSON  
848