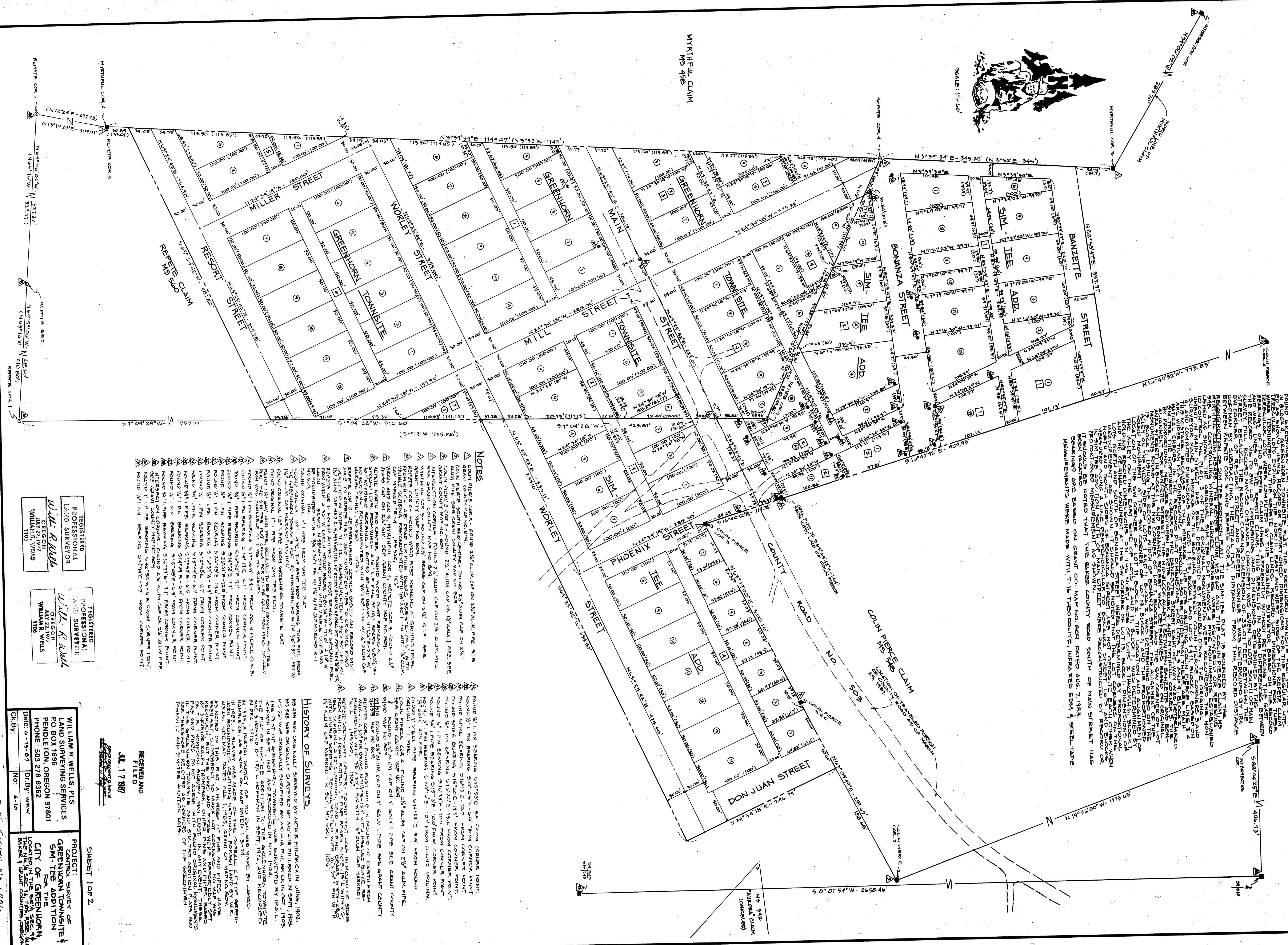


- - FOUND CORNER AS NOTED - SEE NOTES.
- - FOUND CORNER AS NOTED - SEE NOTES.
- - FOUND ORIGINAL CORNER FROM GREENHORN TOWNSITE OR SIXTH PLAT - SEE NOTES.
- ◉ - FOUND OR RE-ESTABLISHED REFERENCE MEASUREMENT CORNER - SEE NOTES.
- ◊ - FOUND OUT-OF-POSITION AND UNRECORDED TIE, PIPE OR STRIKE - SEE NOTES.
- - LOT NUMBERS
- ⊖ - BLOCK NUMBERS
- △ - SEE NOTE INDEXED BY NUMBER.
- (x,y) - RECORD BEARINGS AND DISTANCES.

LEGEND

■ - FOUND

● - FOUND

[illegible]

FINALLY SURVEY
FINALLY SURVEY
FINALLY SURVEY

THE PLANT OF GREENHORN TOWNSHITE WAS SOLICITED BY N.M.S.T. HOFFMAN IN SEPT. 1904, AND RECORDED IN THE GREENHORN TOWNSHITE DEEDS BY J. L. HOFFMAN IN SEPT. 1912, AND RECORDED IN DEC. 1912.

IN 1913, A PARTIAL SURVEY OF N.M.S.T. WAS MADE BY JAMES HANDEKORN, AS MAY WAS MADE OF THE OVERALL CITY OF GREENHORN BOULEVARD, ABUTTING NATIONAL FOREST LAND BY W.R. WELLS, SEE MAP DATED AUG. 1893, GRANT CO. MAP BY W.R. WELLS.

AS NOTED ON THIS PLANT, HANDEKORN AND PIPES HAVE BEEN RECORDED, BUT THE PINS AND PIPES WERE NEVER REPORTED USED BY JUNEKOR RALPH HANDEKORN. THE PINS AND PIPES WERE NEVER REPORTED USED BY JUNEKOR RALPH HANDEKORN. IN ANY EVENT, THESE PINS AND PIPES DO NOT AGREE WITH A SQUARE ORIGINALLY MONUMENTED IN THE GREENHORN TOWNSHITE, AS NOTED ON THE GREENHORN TOWNSHITE AND S.M.T. ADDITION LOTS, OF THE GREENHORN TOWNSHITE AND S.M.T. ADDITION LOTS.

RECEIVED AND
FILED

JUL 17 1987

SHEET 1 OF 2

MAP OF SURVEY NO. 1006

MAP OF SURVEY NO. 1006