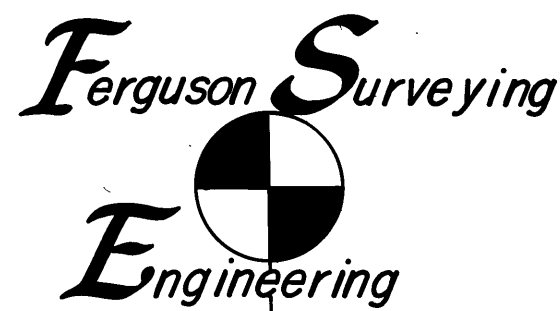


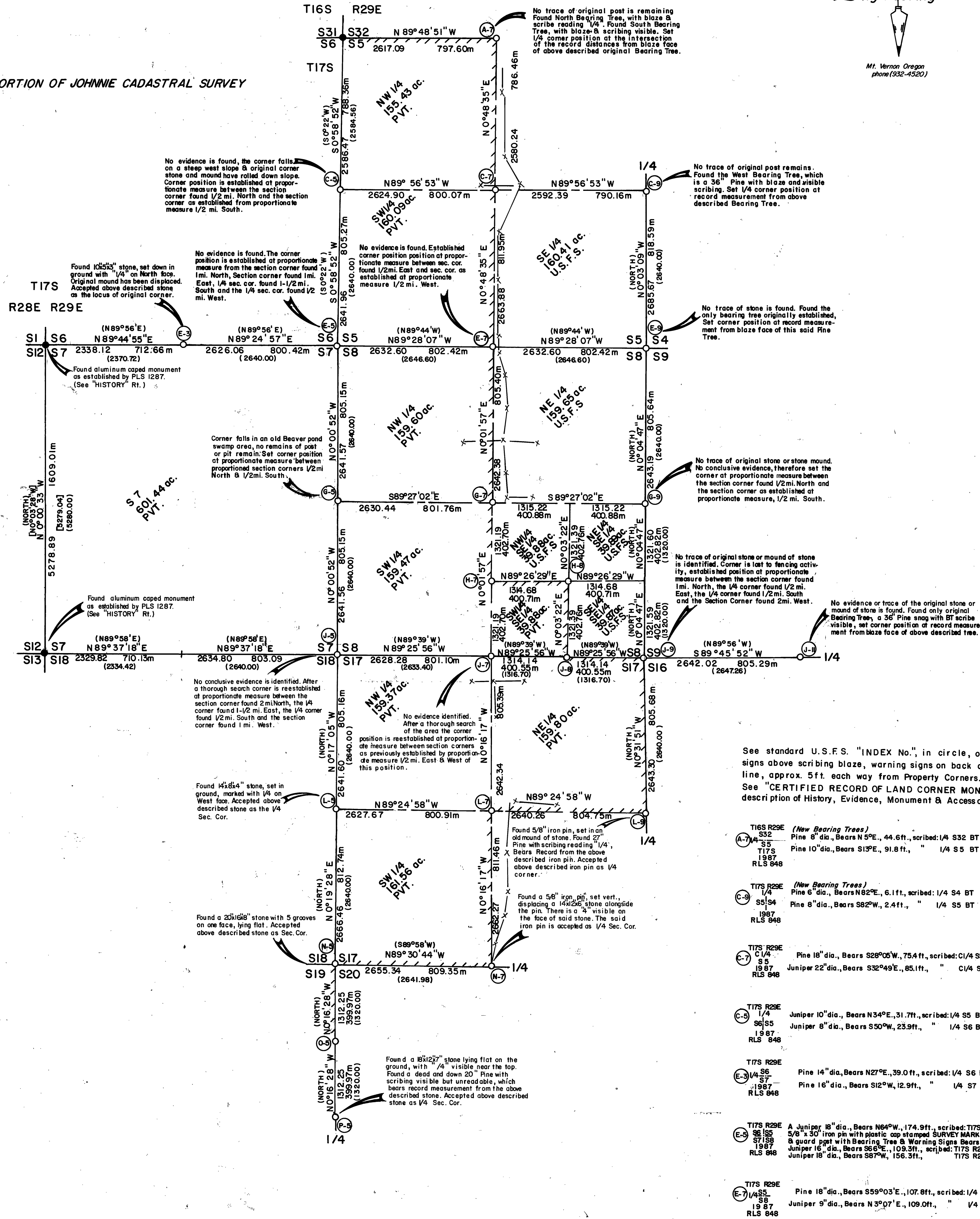
**Subdivision & Marking of Forest Boundary**  
Sections 5, 8, 17, 19, & 20, T.17S., R.29E., W.M.  
Grant County Oregon.

May & June 1987  
FOR: U.S.D.A. Forest Service  
BY: Douglas M. Ferguson PLS 848, Ken Delano, & D. Mitchell Ferguson  
DRAWN BY: Mollie Ferguson Wood



Mt. Vernon Oregon  
phone (503-4520)

**PORTION OF JOHNNIE CADASTRAL SURVEY**



**LEGEND**

- Found aluminum capped monument of Record.
- Set 2 1/2" x 30" aluminum pipe with 3 1/2" aluminum cap stamped as shown under "MONUMENTATION".
- ( ) Record bearing or distance as reported by Bamford Robb, the original G.L.O. surveyor.
- [ ] Record bearing or distance as reported by C.F. Palmer, PLS 1287 in his 1981 survey for the U.S.F.S.
- ||||| Property line posted with metal post & boundary signs at max. intervals of 250'.
- Fence line

**NARRATIVE**

This Survey is performed under contract for the Malheur National Forest, the purpose of which is the establishment and marking of the Forest Boundary, as shown on this Map.

The pertinent boundaries of Sections 5, 8, 17 and the N 1/2 of the W boundary of Section 20 are retraced.

Around Section 5 the NW 1/4 Cor., the SW Sec. Corner and the SE 1/4 Corners are determined to be lost. The retracement is continued West from the SW corner of Section 5 to the monument found at the NW Corner of Section 7, from this a search area is determined and the 1/4 corner S6/S7 is found. The lost corner to sections 5/6/7/8 is then reestablished by proportionate measure and the lost West and South 1/4 corners of section 5 are reestablished at proportionate measure between the found and reestablished section corners.

Around the Remaining Boundaries of Section 8 the NW 1/4, SW Cor., the SE 1/4, the SE Cor. and the NE 1/4 corner are determined to be lost. The retracement is then extended from the SW Cor. of Sec. 8 West to the Monument found at the SW Cor. of Sec. 7 a search is made for the 1/4 cor. between Secs. 7/18 and is found to be lost to a meandering Creek. The retracement is then extended East from the SE Cor. of Section 8 and the 1/4 corner between Secs. 9/16 is found 1/2 mi. East. In retracing Section 17, the E & W 1/4 corners are found and the lost SW and SE Corners of Section 8 are reestablished at proportionate measure. The lost 1/4 Corners are then reestablished at proportionate measure between the found and reestablished section corners.

All the pertinent remaining corners on the boundaries of section 17 are found and the 1/4 corner between sections 19/20 is found.

The required subdivisions are then made the property boundaries determined and the subdivisinal property corners established.

The "CERTIFIED RECORD OF LAND CORNER MONUMENTATION" forms as referenced to this Map and the notes shown on the Map should be considered a substantial part of this "NARRATIVE", as they contain the detailed information as to the evaluation of evidence found and monumentation work performed.

Positional control for this survey is provided by a closed traverse network LIETZ SDM 3E. Electronic tachometer is used to obtain the measurements and HP-96B computer system is used to perform the computations. Field Notes and computations are on file in the office of "FERGUSON SURVEYING & ENGINEERING", Mt. Vernon Oregon.

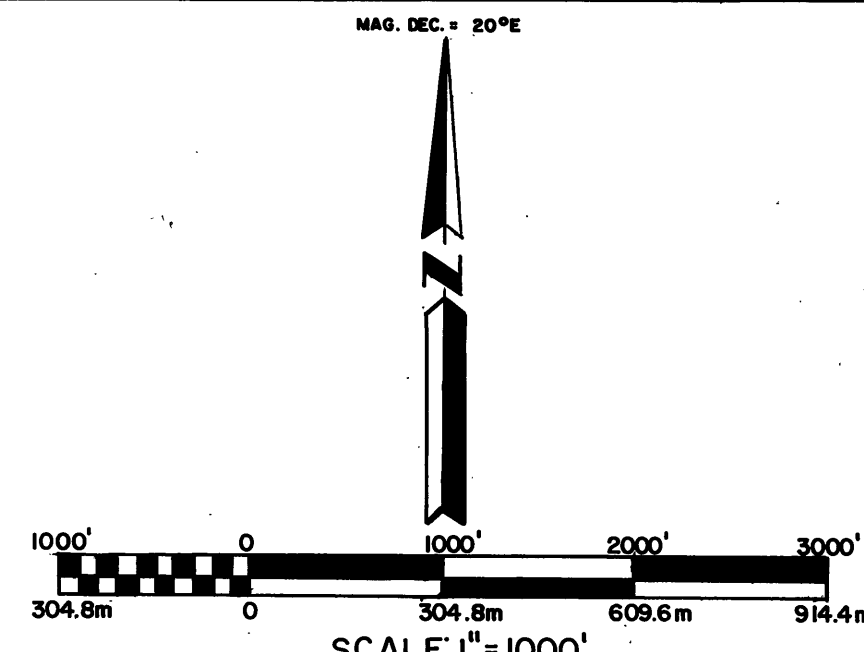
I, Douglas M. Ferguson, Registered Professional Land Surveyor, in the State of Oregon, hereby certify that this plat, notes and records hereon or referenced are a correct representation of the survey I performed during, May & June of 1987 for the U.S. Forest Service in accordance with the statutes of the State of Oregon and the articles of my contract, No. 53-04H1-6-0123N

Douglas M. Ferguson, Or. PLS 848.

**MONUMENTATION**

See standard U.S.F.S. "INDEX No." in circle, on the Map Lt., Monuments are stamped & Bearing Trees or other Accessories are taken as shown below. Nailed Bearing Tree signs above scribing blaze, warning signs on back and brass washers stamped "PLS 848 above BT scribe on each tree. Set steel posts with warning and/or boundary signs, on the property line, approx. 5 ft. each way from Property Corners. Set steel posts with warning sign within 5 ft. in cardinal direction from each Controlling Corner. See "CERTIFIED RECORD OF LAND CORNER MONUMENTATION" forms as referenced to this Map of Survey "No. 1004" and on file in office of the Grant County Surveyor, for complete description of History, Evidence, Monument & Accessories.

<p><b>T16S R29E (New Bearing Trees)</b></p> <p>Pin 8" dia., Bears N5°E., 44.6 ft., scribed: 1/4 S32 BT</p> <p>Pin 10" dia., Bears S15°E., 91.8 ft., " 1/4 S5 BT</p> <p>RLS 848</p>	<p><b>T17S R29E</b></p> <p>Pin 14" dia., Bears N50°W., 23.3 ft., scribed: T17S R29E S5 BT</p> <p>Pin 20" dia., Bears N30°E., 22.3 ft., " T17S R29E S4 BT</p> <p>Pin 16" dia., Bears S7°E., 41.7 ft., " T17S R29E S9 BT</p> <p>Pin 16" dia., Bears S50°W., 11.0 ft., " T17S R29E S8 BT</p> <p>RLS 848</p>	<p><b>T17S R29E</b></p> <p>Pin 32" dia., Bears N68°E., 16.8 ft., scribed: T17S R29E S9 BT</p> <p>Pin 24" dia., Bears S26°E., 98.1 ft., " T17S R29E S16 BT</p> <p>Pin 16" dia., Bears S7°E., 41.7 ft., " T17S R29E S9 BT</p> <p>Pin 16" dia., Bears S50°W., 11.0 ft., " T17S R29E S8 BT</p> <p>RLS 848</p>	<p><b>T17S R29E</b></p> <p>Pin 18" dia., Bears N67°W., 41.2 ft., scribed: 1/4 S17 BT</p> <p>Pin 24" dia., Bears S2°W., 42.7 ft., " 1/4 S20 BT</p> <p>RLS 848</p>
<p><b>T17S R29E (New Bearing Trees)</b></p> <p>Pin 6" dia., Bears N82°E., 6.1 ft., scribed: 1/4 S4 BT</p> <p>Pin 8" dia., Bears S82°W., 2.4 ft., " 1/4 S5 BT</p> <p>RLS 848</p>	<p><b>T17S R29E</b></p> <p>Pin 18" dia., Bears N22°W., 33.9 ft., scribed: 1/4 S8 BT</p> <p>Pin 14" dia., Bears S55°E., 6.3 ft., " 1/4 S9 BT</p> <p>RLS 848</p>	<p><b>T17S R29E</b></p> <p>Pin 18" dia., Bears N30°W., 102.6 ft., scribed: E1/6 S8 BT</p> <p>Pin 18" dia., Bears N30°W., 102.6 ft., scribed: E1/6 S8 BT</p> <p>Pin 18" dia., Bears N30°W., 102.6 ft., scribed: E1/6 S8 BT</p> <p>Pin 18" dia., Bears N30°W., 102.6 ft., scribed: E1/6 S8 BT</p> <p>RLS 848</p>	<p><b>T17S R29E</b></p> <p>Pin 14" dia., Bears N8°W., 16.8 ft., scribed: T17S R29E S16 BT</p> <p>Pin 12" dia., Bears N81°E., 35.8 ft., " T17S R29E S17 BT</p> <p>Pin 16" dia., Bears S79°E., 39.5 ft., " T17S R29E S20 BT</p> <p>Pin 20" dia., Bears S65°W., 57.1 ft., " T17S R29E S19 BT</p> <p>RLS 848</p>
<p><b>T17S R29E</b></p> <p>Pin 18" dia., Bears S26°E., 75.4 ft., scribed: C1/4 S5 BT</p> <p>Pin 22" dia., Bears S32°E., 85.1 ft., " C1/4 S5 BT</p> <p>RLS 848</p>	<p><b>T17S R29E</b></p> <p>Pin 13" dia., Bears S74°W., 13.8 ft., scribed: C1/4 S8 BT</p> <p>Pin 12" dia., Bears S54°E., 17.8 ft., " C1/4 S8 BT</p> <p>RLS 848</p>	<p><b>T17S R29E</b></p> <p>Set 5/8" x 30" iron pins with plastic caps stamped: PLS 848 SURVEY MARKER and guard post with warning signs and Bearing Tree signs, as follows: North 10 ft. and West 10 ft. from corner</p> <p>RLS 848</p>	<p><b>T17S R29E</b></p> <p>Set 5/8" x 30" iron pins with plastic caps stamped: PLS 848 SURVEY MARKER and guard post with warning signs and Bearing Tree signs, as follows: North 10 ft. and West 10 ft. from corner</p> <p>RLS 848</p>
<p><b>T17S R29E</b></p> <p>Pin 14" dia., Bears N27°E., 39.0 ft., scribed: 1/4 S6 BT</p> <p>Pin 16" dia., Bears S12°W., 12.9 ft., " 1/4 S7 BT</p> <p>RLS 848</p>	<p><b>T17S R29E</b></p> <p>Pin 14" dia., Bears N27°E., 39.0 ft., scribed: 1/4 S6 BT</p> <p>Pin 16" dia., Bears S12°W., 12.9 ft., " 1/4 S7 BT</p> <p>RLS 848</p>	<p><b>T17S R29E</b></p> <p>Pin 14" dia., Bears N27°E., 39.0 ft., scribed: 1/4 S6 BT</p> <p>Pin 16" dia., Bears S12°W., 12.9 ft., " 1/4 S7 BT</p> <p>RLS 848</p>	<p><b>T17S R29E</b></p> <p>Pin 14" dia., Bears N27°E., 39.0 ft., scribed: 1/4 S6 BT</p> <p>Pin 16" dia., Bears S12°W., 12.9 ft., " 1/4 S7 BT</p> <p>RLS 848</p>
<p><b>T17S R29E</b></p> <p>Pin 18" dia., Bears N64°W., 174.9 ft., scribed: T17S R29E S6 BT</p> <p>Pin 18" dia., Bears N64°W., 174.9 ft., scribed: T17S R29E S6 BT</p> <p>Pin 18" dia., Bears N64°W., 174.9 ft., scribed: T17S R29E S6 BT</p> <p>Pin 18" dia., Bears N64°W., 174.9 ft., scribed: T17S R29E S6 BT</p> <p>RLS 848</p>	<p><b>T17S R29E</b></p> <p>Pin 18" dia., Bears N64°W., 174.9 ft., scribed: T17S R29E S6 BT</p> <p>Pin 18" dia., Bears N64°W., 174.9 ft., scribed: T17S R29E S6 BT</p> <p>Pin 18" dia., Bears N64°W., 174.9 ft., scribed: T17S R29E S6 BT</p> <p>Pin 18" dia., Bears N64°W., 174.9 ft., scribed: T17S R29E S6 BT</p> <p>RLS 848</p>	<p><b>T17S R29E</b></p> <p>Pin 18" dia., Bears N64°W., 174.9 ft., scribed: T17S R29E S6 BT</p> <p>Pin 18" dia., Bears N64°W., 174.9 ft., scribed: T17S R29E S6 BT</p> <p>Pin 18" dia., Bears N64°W., 174.9 ft., scribed: T17S R29E S6 BT</p> <p>Pin 18" dia., Bears N64°W., 174.9 ft., scribed: T17S R29E S6 BT</p> <p>RLS 848</p>	<p><b>T17S R29E</b></p> <p>Pin 18" dia., Bears N64°W., 174.9 ft., scribed: T17S R29E S6 BT</p> <p>Pin 18" dia., Bears N64°W., 174.9 ft., scribed: T17S R29E S6 BT</p> <p>Pin 18" dia., Bears N64°W., 174.9 ft., scribed: T17S R29E S6 BT</p> <p>Pin 18" dia., Bears N64°W., 174.9 ft., scribed: T17S R29E S6 BT</p> <p>RLS 848</p>
<p><b>T17S R29E</b></p> <p>Pin 18" dia., Bears N64°W., 174.9 ft., scribed: T17S R29E S6 BT</p> <p>Pin 18" dia., Bears N64°W., 174.9 ft., scribed: T17S R29E S6 BT</p> <p>Pin 18" dia., Bears N64°W., 174.9 ft., scribed: T17S R29E S6 BT</p> <p>Pin 18" dia., Bears N64°W., 174.9 ft., scribed: T17S R29E S6 BT</p> <p>RLS 848</p>	<p><b>T17S R29E</b></p> <p>Pin 18" dia., Bears N64°W., 174.9 ft., scribed: T17S R29E S6 BT</p> <p>Pin 18" dia., Bears N64°W., 174.9 ft., scribed: T17S R29E S6 BT</p> <p>Pin 18" dia., Bears N64°W., 174.9 ft., scribed: T17S R29E S6 BT</p> <p>Pin 18" dia., Bears N64°W., 174.9 ft., scribed: T17S R29E S6 BT</p> <p>RLS 848</p>	<p><b>T17S R29E</b></p> <p>Pin 18" dia., Bears N64°W., 174.9 ft., scribed: T17S R29E S6 BT</p> <p>Pin 18" dia., Bears N64°W., 174.9 ft., scribed: T17S R29E S6 BT</p> <p>Pin 18" dia., Bears N64°W., 174.9 ft., scribed: T17S R29E S6 BT</p> <p>Pin 18" dia., Bears N64°W., 174.9 ft., scribed: T17S R29E S6 BT</p> <p>RLS 848</p>	<p><b>T17S R29E</b></p> <p>Pin 18" dia., Bears N64°W., 174.9 ft., scribed: T17S R29E S6 BT</p> <p>Pin 18" dia., Bears N64°W., 174.9 ft., scribed: T17S R29E S6 BT</p> <p>Pin 18" dia., Bears N64°W., 174.9 ft., scribed: T17S R29E S6 BT</p> <p>Pin 18" dia., Bears N64°W., 174.9 ft., scribed: T17S R29E S6 BT</p> <p>RLS 848</p>
<p><b>T17S R29E</b></p> <p>Pin 18" dia., Bears N64°W., 174.9 ft., scribed: T17S R29E S6 BT</p> <p>Pin 18" dia., Bears N64°W., 174.9 ft., scribed: T17S R29E S6 BT</p> <p>Pin 18" dia., Bears N64°W., 174.9 ft., scribed: T17S R29E S6 BT</p> <p>Pin 18" dia., Bears N64°W., 174.9 ft., scribed: T17S R29E S6 BT</p> <p>RLS 848</p>	<p><b>T17S R29E</b></p> <p>Pin 18" dia., Bears N64°W., 174.9 ft., scribed: T17S R29E S6 BT</p> <p>Pin 18" dia., Bears N64°W., 174.9 ft., scribed: T17S R29E S6 BT</p> <p>Pin 18" dia., Bears N64°W., 174.9 ft., scribed: T17S R29E S6 BT</p> <p>Pin 18" dia., Bears N64°W., 174.9 ft., scribed: T17S R29E S6 BT</p> <p>RLS 848</p>	<p><b>T17S R29E</b></p> <p>Pin 18" dia., Bears N64°W., 174.9 ft., scribed: T17S R29E S6 BT</p> <p>Pin 18" dia., Bears N64°W., 174.9 ft., scribed: T17S R29E S6 BT</p> <p>Pin 18" dia., Bears N64°W., 174.9 ft., scribed: T17S R29E S6 BT</p> <p>Pin 18" dia., Bears N64°W., 174.9 ft., scribed: T17S R29E S6 BT</p> <p>RLS 848</p>	<p><b>T17S R29E</b></p> <p>Pin 18" dia., Bears N64°W., 174.9 ft., scribed: T17S R29E S6 BT</p> <p>Pin 18" dia., Bears N64°W., 174.9 ft., scribed: T17S R29E S6 BT</p> <p>Pin 18" dia., Bears N64°W., 174.9 ft., scribed: T17S R29E S6 BT</p> <p>Pin 18" dia., Bears N64°W., 174.9 ft., scribed: T17S R29E S6 BT</p> <p>RLS 848</p>
<p><b>T17S R29E</b></p> <p>Pin 18" dia., Bears N64°W., 174.9 ft., scribed: T17S R29E S6 BT</p> <p>Pin 18" dia., Bears N64°W., 174.9 ft., scribed: T17S R29E S6 BT</p> <p>Pin 18" dia., Bears N64°W., 174.9 ft., scribed: T17S R29E S6 BT</p> <p>Pin 18" dia., Bears N64°W., 174.9 ft., scribed: T17S R29E S6 BT</p> <p>RLS 848</p>	<p><b>T17S R29E</b></p> <p>Pin 18" dia., Bears N64°W., 174.9 ft., scribed: T17S R29E S6 BT</p> <p>Pin 18" dia., Bears N64°W., 174.9 ft., scribed: T17S R29E S6 BT</p> <p>Pin 18" dia., Bears N64°W., 174.9 ft., scribed: T17S R29E S6 BT</p> <p>Pin 18" dia., Bears N64°W., 174.9 ft., scribed: T17S R29E S6 BT</p> <p>RLS 848</p>	<p><b>T17S R29E</b></p> <p>Pin 18" dia., Bears N64°W., 174.9 ft., scribed: T17S R29E S6 BT</p> <p>Pin 18" dia., Bears N64°W., 174.9 ft., scribed: T17S R29E S6 BT</p> <p>Pin 18" dia., Bears N64°W., 174.9 ft., scribed: T17S R29E S6 BT</p> <p>Pin 18" dia., Bears N64°W., 174.9 ft., scribed: T17S R29E S6 BT</p> <p>RLS 848</p>	<p><b>T17S R29E</b></p> <p>Pin 18" dia., Bears N64°W., 174.9 ft., scribed: T17S R29E S6 BT</p> <p>Pin 18" dia., Bears N64°W., 174.9 ft., scribed: T17S R29E S6 BT</p> <p>Pin 18" dia., Bears N64°W., 174.9 ft., scribed: T17S R29E S6 BT</p> <p>Pin 18" dia., Bears N64°W., 174.9 ft., scribed: T17S R29E S6 BT</p> <p>RLS 848</p>
<p><b>T17S R29E</b></p> <p>Pin 18" dia., Bears N64°W., 174.9 ft., scribed: T17S R29E S6 BT</p> <p>Pin 18" dia., Bears N64°W., 174.9 ft., scribed: T17S R29E S6 BT</p> <p>Pin 18" dia., Bears N64°W., 174.9 ft., scribed: T17S R29E S6 BT</p> <p>Pin 18" dia., Bears N64°W., 174.9 ft., scribed: T17S R29E S6 BT</p> <p>RLS 848</p>	<p><b>T17S R29E</b></p> <p>Pin 18" dia., Bears N64°W., 174.9 ft., scribed: T17S R29E S6 BT</p> <p>Pin 18" dia., Bears N64°W., 174.9 ft., scribed: T17S R29E S6 BT</p> <p>Pin 18" dia., Bears N64°W., 174.9 ft., scribed: T17S R29E S6 BT</p> <p>Pin 18" dia., Bears N64°W., 174.9 ft., scribed: T17S R29E S6 BT</p> <p>RLS 848</p>	<p><b>T17S R29E</b></p> <p>Pin 18" dia., Bears N64°W., 174.9 ft., scribed: T17S R29E S6 BT</p> <p>Pin 18" dia., Bears N64°W., 174.9 ft., scribed: T17S R29E S6 BT</p> <p>Pin 18" dia., Bears N64°W., 174.9 ft., scribed: T17S R29E S6 BT</p> <p>Pin 18" dia., Bears N64°W., 174.9 ft., scribed: T17S R29E S6 BT</p> <p>RLS 848</p>	<p><b>T17S R29E</b></p> <p>Pin 18" dia., Bears N64°W., 174.9 ft., scribed: T17S R29E S6 BT</p> <p>Pin 18" dia., Bears N64°W., 174.9 ft., scribed: T17S R29E S6 BT</p> <p>Pin 18" dia., Bears N64°W., 174.9 ft., scribed: T17S R29E S6 BT</p> <p>Pin 18" dia., Bears N64°W., 174.9 ft., scribed: T17S R29E S6 BT</p> <p>RLS 848</p>



**BASIS OF BEARINGS**

SOLAR OBSERVATION, WITH TRUE MERIDIAN  
THROUGH THE CENTER LINE OF SECTIONS  
5, 8, & 17.

**HISTORY**

The West Exterior and the Subdivision of T.17S., R.29E., were originally surveyed by Bamford Robb, in 1880, under General Land Office Contract No. 366.

In November 1981, Charles F. Palmer, PLS 1287, retraced the West Exterior of T.17S., R.29E., and reestablished the NW & SW Corners of Section 7, which are pertinent to this Survey. Charles F. Palmer's Survey was performed for the U.S. Forest Service, and is on file in the Office of the Malheur National Forest and the Grant County Surveyor.