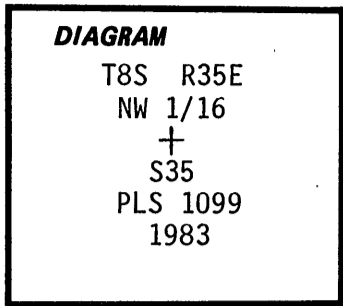


CERTIFIED RECORD OF LAND CORNER MONUMENTATION

History of original corner establishment:

None



Description of corner evidence found:

None

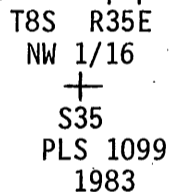
Description of monument and accessories established to perpetuate the original location of this corner:

At CORNER POSITION determined by survey set a 2 1/2"x30" galv. iron pipe with brass cap 29" in ground marked:

From Which:

A Lodge Pole Pine 7" dia. bears N54°W, 29.1 ft. marked NW 1/16 S35 BT.

A Lodge Pole Pine 5" dia. bears S 33°W, 20.7 ft. marked X BT.



Attached brass washers stamped LS 1099 to BT blaze on both trees.

Corner location perpetuated in accordance with Umatilla N.F. survey contract no. 53-OR3-2-01275

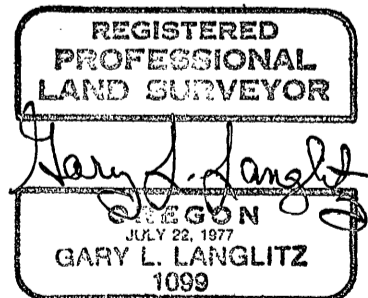
Post North w/54-2

Post East w/54-2 & 54-9

20° E Declination Steel Tape

Corner falls 50' into clearcut at edge of meadow

September 21, 1983 Witnesses: A. Ray Crapo
 Greg Orton
 Kyle McKinney



Refer to Grant County Survey No. 828

Office of.....SURVEYOR..... County of.....GRANT.....
 State of...OREGON..... I hereby certify that the within instrument was filed in this office
 for record on the...30... day of...AUG.... 19...84...
Robert D. Bayliff by
 (COUNTY OFFICIAL) (DEPUTY)