

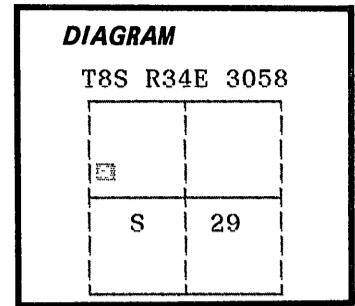
CERTIFIED RECORD OF LAND CORNER MONUMENTATION

History of original corner establishment:

Corner not previously established

NOTE

This monument marks the Wilderness Boundary within the National Forest Lands, only.



Description of corner evidence found:

Corner not previously established

Description of monument and accessories I established to perpetuate the original location of this corner:

At a point on the 6640 foot contour line, in the area of the West line of section S-29, I set a 2½" x 30" aluminum pipe with aluminum cap marked as shown, 29 inches in the ground, from which;

Bearing Trees;

A 11" Douglas Fir bears N 60 E, 32.68 feet marked WB 3058 BT  
A 10" Spruce, bears S 25 W, 26.55 feet marked WB 3058 BT.

Painted a 6 inch red band around all BTs and attached BT tags.

Set a steel fencepost approximately 5 feet West with signs attached.

I hereby certify that the above corner point was established as hereon described on August 3, 1990.

USDA FOREST SERVICE  
WILDERNESS BOUNDARY

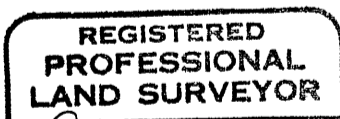
NO 3058

EL 6640

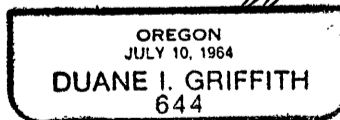
OPLS 644 1990

UNLAWFUL TO DISTURB

Witness: Jeff Petersen  
Larry Pitcher



*Handwritten signature of Duane I. Griffith*



I used a steel tape and magnetic compass in the establishment of new accessories. I used 19° magnetic declination. The distances are to a 50d spike driven in the right side of the root crown. I attached a brass washer marked OPLS 664 to the BT blaze.

Office of... *Surveyor* ..... County of... *Grant* .....

State of... *Oregon* ....., I hereby certify that the within instrument was filed in this office for record on the... *27*... day of... *Sept* ....., 19... *90* .....

..... *Robert D. Bayne* ..... by .....  
(COUNTY OFFICIAL) (DEPUTY)