

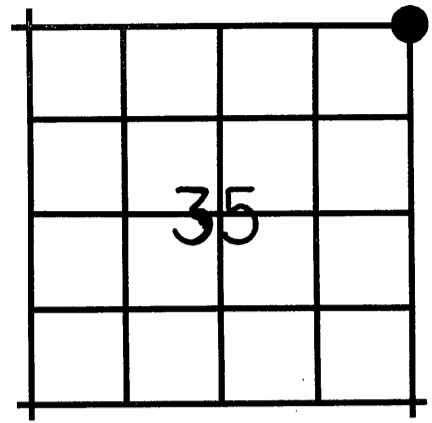
CORNER RESTORATION

CORNER ^{NE cor.} Sec. 35 TWP 8 S. RANGE 28 E.

ORIGINAL SURVEY BY: Henry Meldrum

CONTRACT NUMBER: 380

CONTRACT DATE: March 19, 1881



ORIGINAL DESCRIPTION: Set basalt stone 16x9x7 in a mound of stone for cor. to Secs. 25, 26, 35 and 36.

RESTORATION BY, STAMP AND DATE:

R. D. Bagett
J. L. Watson
J. L. Meyerholz

**REGISTERED
PROFESSIONAL
LAND SURVEYOR**

Robert D. Bagett
OREGON
JULY 12, 1963
ROBERT D. BAGETT
598

June 23, 1984

Grant County Surveyor

EVIDENCE FOUND: Found basalt corner stone 15x9x7 inches dimly marked with one groove, set in a mound of stone.

RECEIVED AND
FILED

JUN 27 1984

OFFICE OF COUNTY SURVEYOR

Robert D. Bagett
Attest: *Lennie Lawrence*

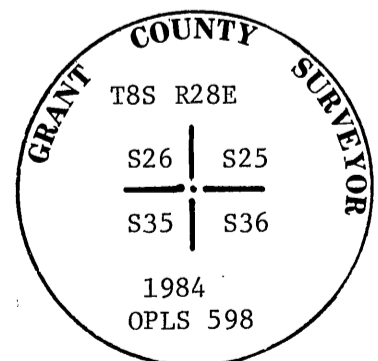
DESCRIPTION OF MONUMENTS AND ACCESSORIES SET AND METHODS USED:

Show how trees are scribed and basis of bearings, including compass var.

At the corner point: I drove a 1 inch long concrete nail flush into bedrock, 6 inches below surface of the ground and over this point set a 1½"x30" galvanized iron pipe 6 inches in the ground with brass cap marked as shown, from which I scribe NEW BEARING TREES:

- A Juniper 13 ins. diam., bears N. 7° E., 11.4 ft., mkd. T8SR28E S25 CSBT.
- A Juniper 8 ins. diam., bears S. 70° E., 141.7 ft., mkd. T8SR28E S36 CSBT.
- A Juniper 10 ins. diam., bears S. 32° W., 143.9 ft., mkd. T8SR28E S35 CSBT.
- A Juniper 9 ins. diam., bears N. 74° W., 118.9 ft., mkd. T8SR28E S26 CSBT.

MONUMENT MARKED



Buried cor. stone North and alongside iron pipe and surrounded pipe with a mound of stone, 5 ft. base to top of cap.
Used magnetic compass with 20° E. var. and steel tape, measuring to head of 40 d nail driven flush with BT blaze at root crown of bearing trees. Attached Grant County Surveyor BT tags to BTs and painted blazes with red timber marking paint.

This cor. is 6 ft. East of a fence line running N. and S.