

CERTIFIED RECORD OF LAND CORNER MONUMENTATION

History of original corner establishment:

Index: T-10

Center West 1/16 corner, Sec. 28, T.7S., R.32E., W.M. Township originally subdivided by Frank Campbell under Contract No. 380 dated 1881. This corner was not set under that contract.	1	DIAGRAM	1
A retracement survey was made by the BLM under assignment instructions dated 1967.	1	BLM brass cap	1
Their record reads:	1	1	1
Set an iron post, 28 ins. long, 2 1/2 ins. diam., 21 ins. in the ground, with brass cap mkd. (see diagram) from which	1	W -	1
A pine, 7 ins. diam., bears N. 74° E., 53 1/2 lks. dist., mkd. CW 1/16 S28 BT. (1968)	1	16	1
A pine, 8 ins. diam., bears S. 47 1/4° W., 36 1/2 lks. dist., mkd. CW 1/16 S28 BT. (1968)	1	C-----C	1
	1	S28	1
	1	1968	1

Description of corner evidence found:

Found the corner monument as described from which:

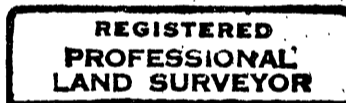
A dead 13" dbh Lodgepole Pine bears N74°E, 35.3' with visible scribe.
 A 19" dbh Ponderosa Pine stump bears S47°15'W, 24.1' with cross section of healed blaze visible.

Description of monument and accessories I established to perpetuate the original location of this corner:

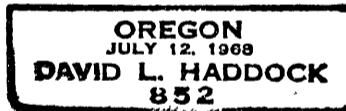
Cleared brush and debris from corner and set two new bearing trees as follows:

A 9" dbh Lodgepole Pine bears S55°E, 3.6' scribed CW 1/16 S28 BT.
 A 7" dbh Douglas Fir bears N14°30'E, 32.2,' scribed CW 1/16 S28 BT.
 The bearings were based on the record bearings to the existing BT's.
 An aluminum washer stamped RLS 852 is nailed between the letters B and T on each new tree. All the BT's have LSM and BT signs attached.
 Painted 6" red bands around all the trees and painted the scribe blazes red.

This work was done July 27, 1993.



David L. Haddock



Office of Surveyor County of Grant
 State of Oregon, I hereby certify that the within instrument was filed
 in this office for record on the 21 day of JAN, 1994.
Robert D. Sargent by _____
 (COUNTY OFFICIAL) (DEPUTY)