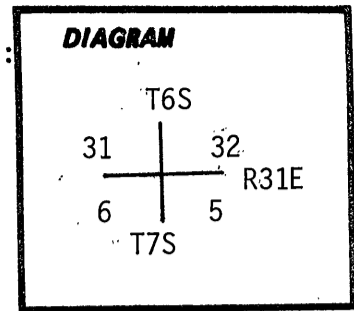


CERTIFIED RECORD OF LAND CORNER MONUMENTATION

History of original corner establishment:

Original survey by Meldrum and Campbell, Contract No. 380, 1881:
Set a Pine post for Cor. to Sec.s 5, 6, 31, 32 from which a Fir
7 in. in diam. bears N31°E 50 lks. dist.
Fir 16" in diam. bears N17°W 21 lks. dist.
Fir 16" in diam. bears S67°W 32 lks. dist.
Fir 30" in diam. bears S45°E 40 lks. dist.



Remonumentation of corner position from original evidence by
Douglas M. Ferguson, LS 848, filed with Grant County
Surveyor Nov. 16, 1972.

Found a 16 in. Fir, live in good condition, with scribing visible, bearing
N31°E, 30.6 ft. from corner position.
Found a 36 in. Fir snag with scribing faintly visible bearing S45°E, 26.4 ft.
from corner position.
Found a 36 in. Fir, live in good condition, with grown-over blazes bearing
S67°W, 21.1 ft. dist. from the corner. (Continued on Page 2 of 2)

Description of corner evidence found:

At the corner point, we find a 2 1/2" Iron Pipe, extending 6 inches
above ground, with brass cap attached, marked:
From which: The remaining 1881 original BT's:

T6S R31E
S31 S32
S6 S5
T7S
1972
PLS 848

A Fir snag with partial scribing visible on an unhealed blaze
bears N21°E 31.5 ft. The original N.W. BT is gone. A 30" Grand
Fir alive and well-healed bears S67°W 22.0, and a 30" Fir, now
a rotten and shattered stob, bears S45°E 26.4 ft. Bearing trees
established in 1972 by Ferguson:

A 32" Grand Fir, alive and healed, bears N17°W 19.4 ft., and
a 10" Grand Fir, alive and healed, bears S40°E 44.9 ft.

**Description of monument and accessories established to perpetuate the
original location of this corner:**

We mark a new bearing tree:

A 10" Grand Fir, scribed "T6S R31E S32 BT" on a double blaze bears
N82°E 42.9 ft., with brass washer marked "LS 1099" nailed to face of
lower blaze.

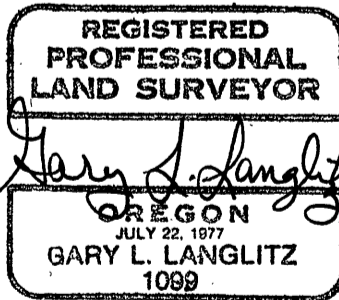
Corner located 55' West of a Creek, course North, and 10' South of
an E-W fence.

Magnetic Compass (Declination 19° East)

Steel Tape

August 26, 1982

Witnesses: Gary Langlitz
Jeff Anderson
Greg Orton



Office of Surveyor County of Grant
State of Oregon, I hereby certify that the within instrument was filed in this office
for record on the 25 day of Jan, 1983
Robert D. Baggett by Gary L. Langlitz
(COUNTY OFFICIAL) (DEPUTY)