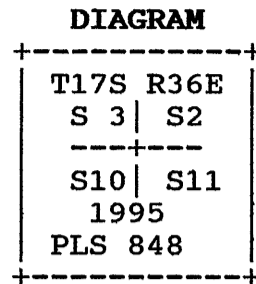


History of original corner establishment:

This corner was originally established by William R. Gradon in 1884 under GLO Contract Number 497. Surveyor General Field Notes state:

Set a basalt stone 14x12x6 ins 9 ins in the ground for cor to secs 2,3,10,&11 marked with 2 notches on E and 5 notches on S edges and raised a mound of stone alongside.



Description of Corner Evidence Found:

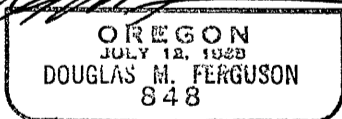
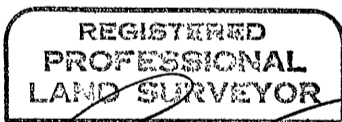
Found original stone 12"x12"x5" set loosley in the ground. When stone is set upright, there are 5 grooves on the south face and 2 notches clearly visible on the east edge. A mound or small cluster of stones is 2 ft. west from stone.

Description of monument and accessories I established to perpetuate the original location of this corner:

At position of original stone, Set a 3"x30" aluminum pipe stamped as shown on diagram, 12" in the ground and rebuilt a 2 ft. high x 4-1/2 ft dia. mound of stone around. Placed the original stone north alongside pipe.

- A Juniper 18" bears, N25°30'W, 113.6 ft., scribed: T17S R36E S3 BT.
- A Juniper 14" bears, N16°45'E, 125.1 ft., scribed: T17S R36E S2 BT. A 5/8"x30" iron pin with plastic cap stamped PLS 848 bears S40°15'E, 30.5 ft., no marks
- A 5/8"x30" iron pin with plastic cap stamped PLS 848 bears S53°00'W, 28.0 ft., one groove on top of pin.

Measurements to accessories taken with a magnetic compass, declination 17° east, and a nylon clad steel tape. Set steel fence post with Land Survey Monument sign 5' north. Nailed a brass washer stamped PLS 848 on blaze above BT scribe as taken this survey. Nailed Bearing Tree sign above blaze and Land Survey Monument sign on back of each tree as required. Painted a 6" red band above Bearing Tree signs and painted blaze red.



Renewal date: 12/31/98

This work was performed by: Douglas M. Ferguson, PLS 848 Witnessed by: D. Mitchell Ferguson and Brad Cates Date: 10-18-95 Refer to Grant County Map of Survey No. 1462

Office of Sumner County of Grant State of OR I hereby certify that the within instrument was filed in this office for record on the 2 day of Feb, 1998 by Robert D. [Signature] (COUNTY OFFICIAL) (DEPUTY)